



Ministry of Health and Sports (Myanmar)

Department of Public Health

Central Epidemiology Unit

(11 June 2020)

Coronavirus Disease 2019 (COVID-19)

Situation Report - 65

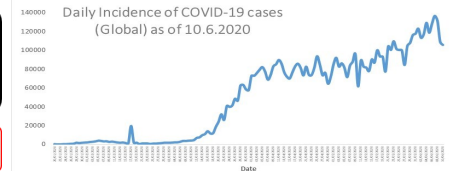
Data as reported by States and Regions by 1:30AM MST 11 June 2020

Global Situation
(WHO situation report - 142)
data as of 14:30 MST 10 June 2020

Confirmed cases
7,145,539

Deaths
408,025

Case Fatality Rate
5.7 %



Myanmar Situation

Total tested
43,936

Confirmed cases
249

Negative
43,687

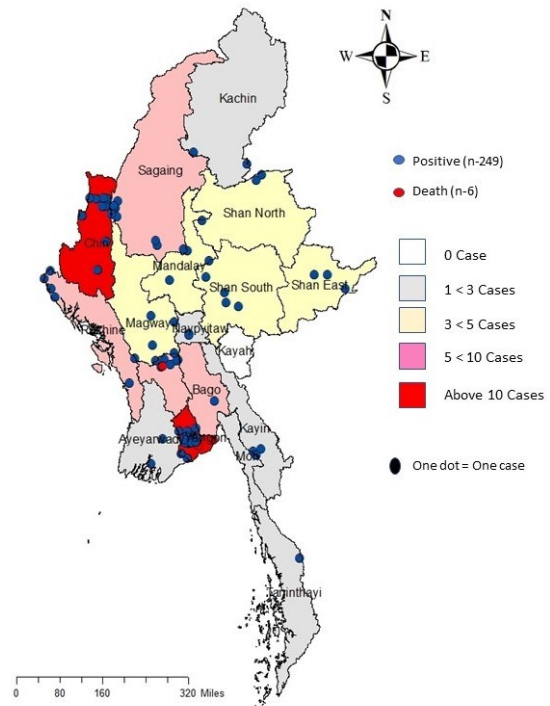
Recovered
165
66.2 % of confirmed cases

Active
78
31.3% of confirmed cases

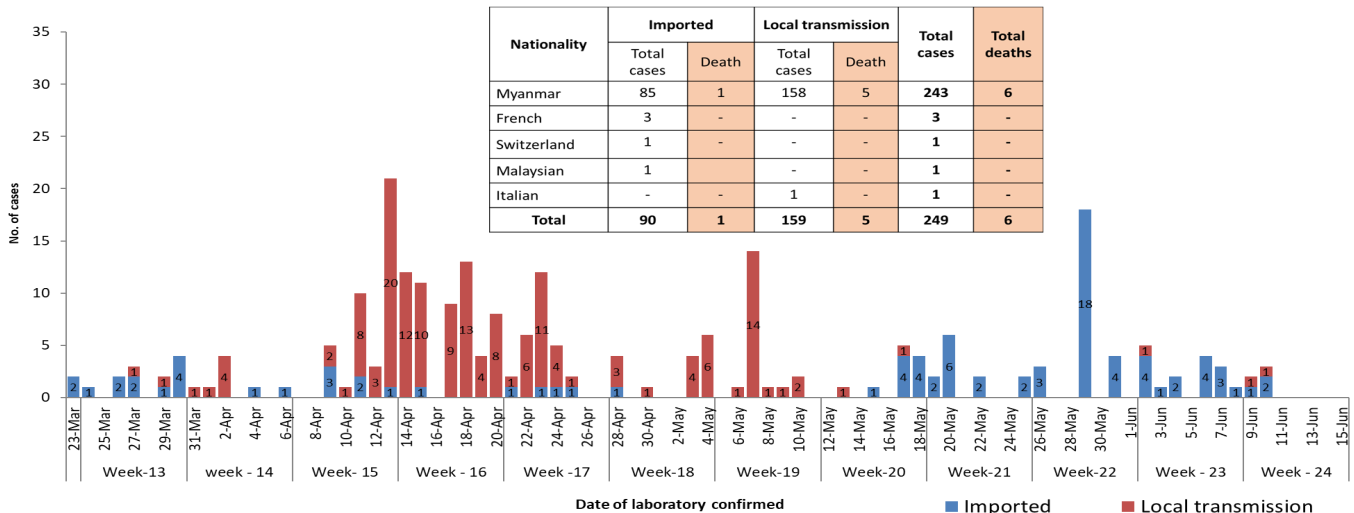
Death
6
2.4% of confirmed cases

No.	State/Region	COVID -19 Confirmed case	Recovered	Deaths
1.	Yangon	190	128	5
2.	Chin	10	5	-
3.	Sagaing	9	7	-
4.	Bago	8	6	1
5.	Rakhine	6 (2 New)	-	-
6.	Shan(South)	4	2	-
7.	Mandalay	3	3	-
8.	Shan(East)	3	3	-
9.	Shan(North)	3	2	-
10.	Magway	3	2	-
11.	Naypyitaw	2	2	-
12.	Kayin	2	1	-
13.	Ayeyarwaddy	2	1	-
14.	Kachin	2 (1 New)	1	-
15.	Mon	1	1	-
16.	Thanintharyi	1	1	-
17.	Kayah	-	-	-
Total		249 (3 new)	165	6

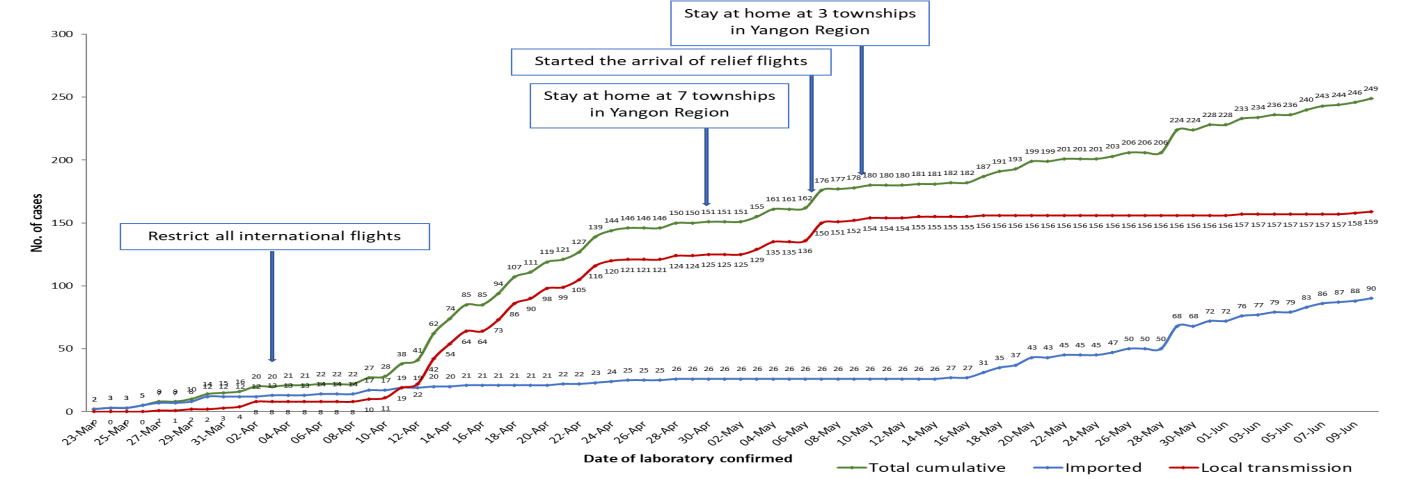
Map showing COVID-19 laboratory confirmed cases



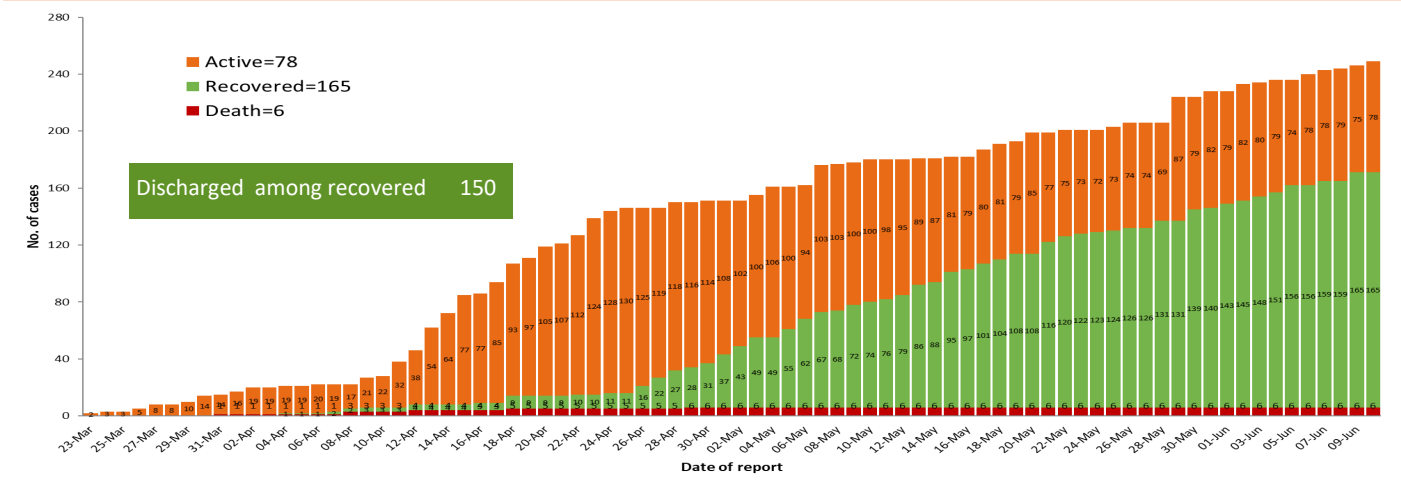
COVID-19 confirmed cases by types of transmissions (as of 11-6-2020,1:30 am) n=249



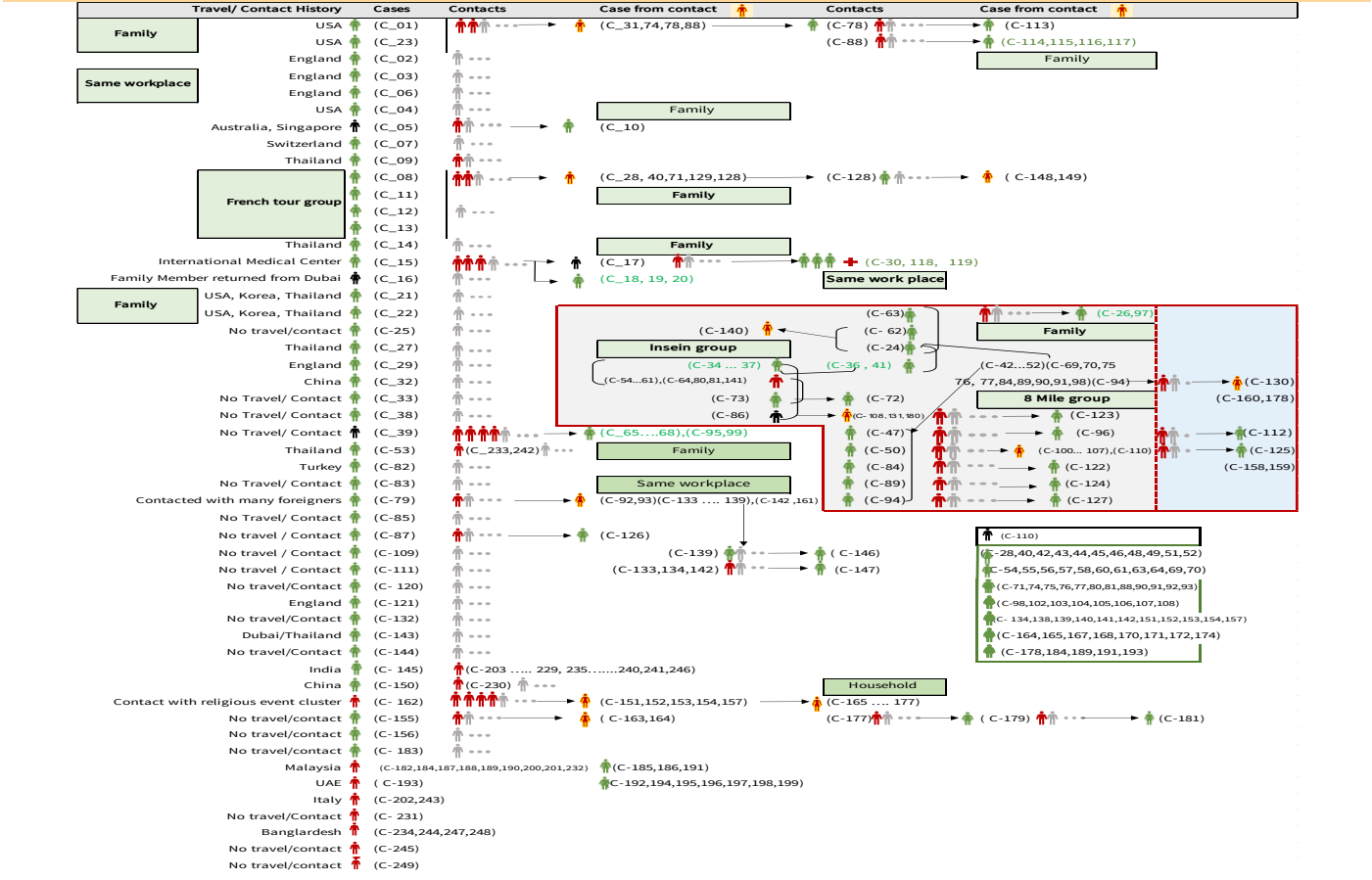
Total laboratory confirmed cases by date (as of 11.6.2020, 1:30 am), n= 249



Cumulative Number of active confirmed cases, recovered and deaths (23.3.2020 – 10-6-2020), n (cumulative)=249



Summary of COVID-19 confirmed cases (as of 10-6-2020) ,n (contacts)= 5,152



Summary of current situation

Type	New (9.6.2020-10.6.2020)	Total (on 10.6.2020)
Suspected and Person Under Investigation (PUI)	28	245
Hospital Quarantine	3	82
Facility Quarantine	1,598	46,239

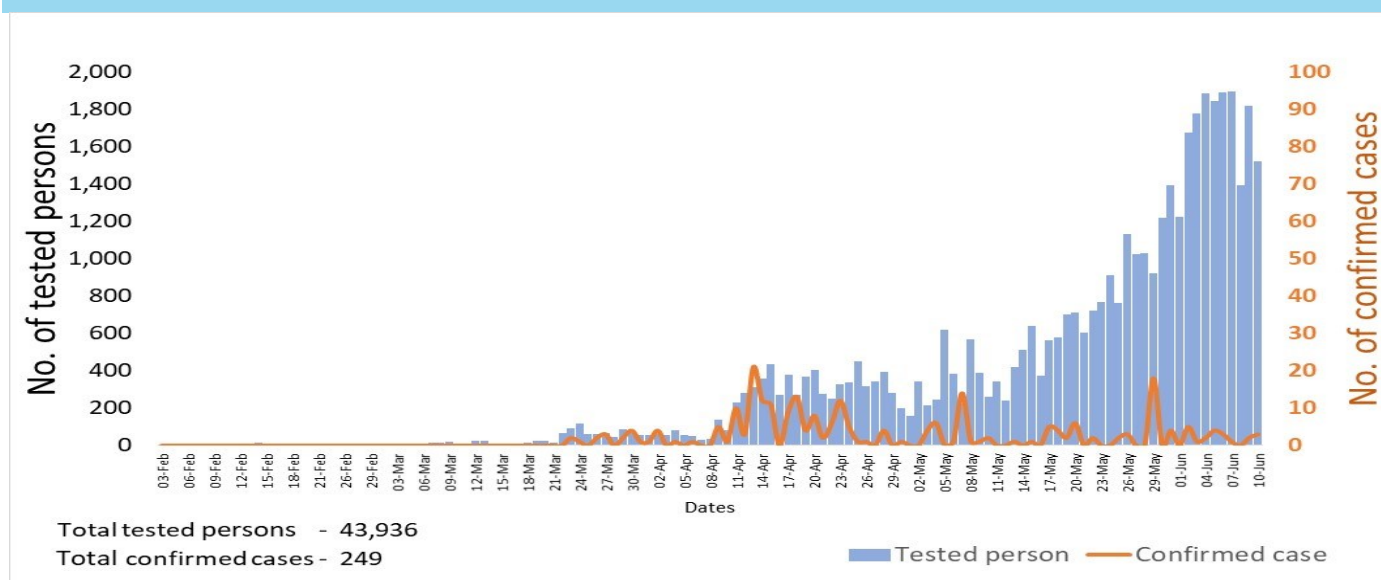
Person under Investigation (PUI) by State/Region hospitals (9.6.2020 – 10.6.2020) n= 5,375

No.	State/Region	PUI
1.	Yangon	2,777
2.	Mandalay	986
3.	Mon	195
4.	Shan(N)	193
5.	Kayin	188
6.	Magway	181
7.	Bago	176
8.	Shan (E)	109
9.	Ayeyarwaddy	99
10.	Shan(S)	93
11.	Sagaing	80
12.	Kayah	76
13.	Naypyitaw	61
14.	Rakhine	58
15.	Thanintharyi	53
16.	Kachin	29
17.	Chin	21
Total		5,375

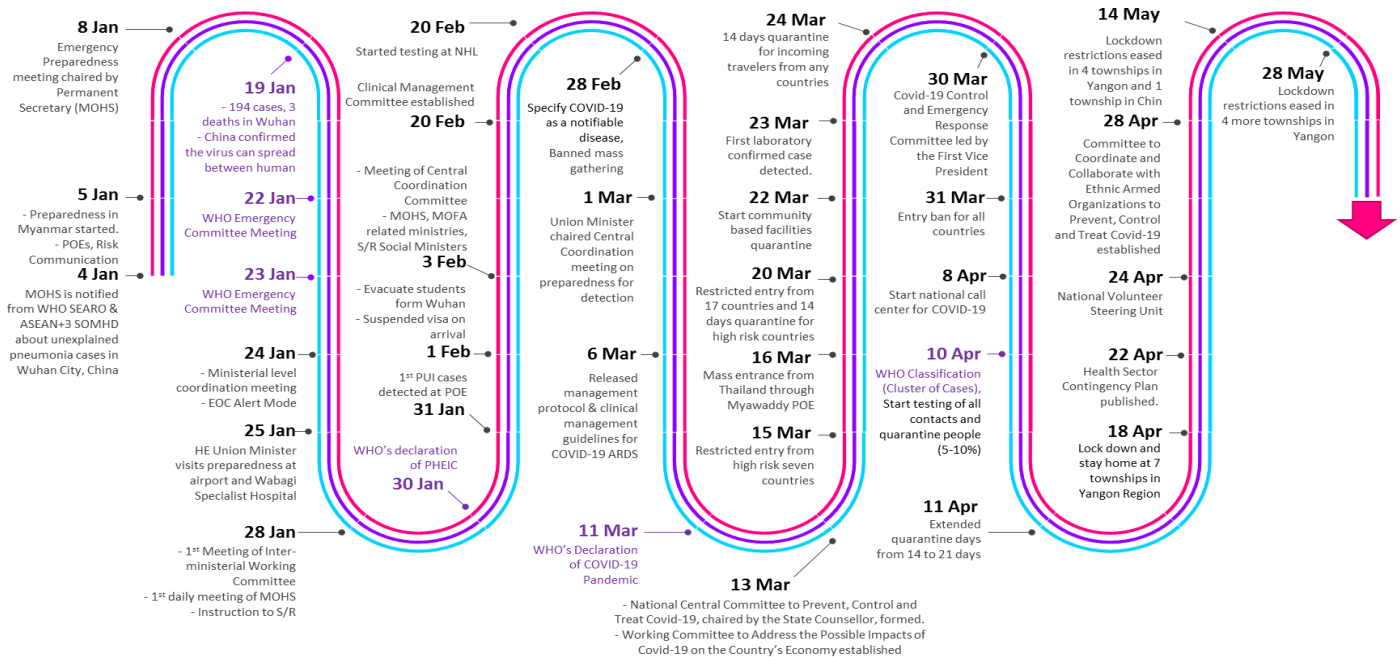
No. of Facility Quarantine sites and Quarantined people on 10.6.2020

No.	State/Region	No. of facilities	Total no. of quarantine
1.	Magway	2,859	8,412
2.	Bago	515	6,762
3.	Kachin	435	4,183
4.	Kayin	756	3,855
5.	Mon	232	3,141
6.	Sagaing	996	2,969
7.	Yangon	80	2,927
8.	Rakhine	612	2,836
9.	Mandalay	295	2,790
10.	Ayeyarwaddy	633	2,200
11.	Shan North	406	1,680
12.	Shan S	126	1,488
13.	Tanintharyi	189	1,226
14.	Naypyitaw	19	1,103
15.	Chin	33	262
16.	Shan East	11	208
17.	Kayah	18	197
Total		8,215	46,239

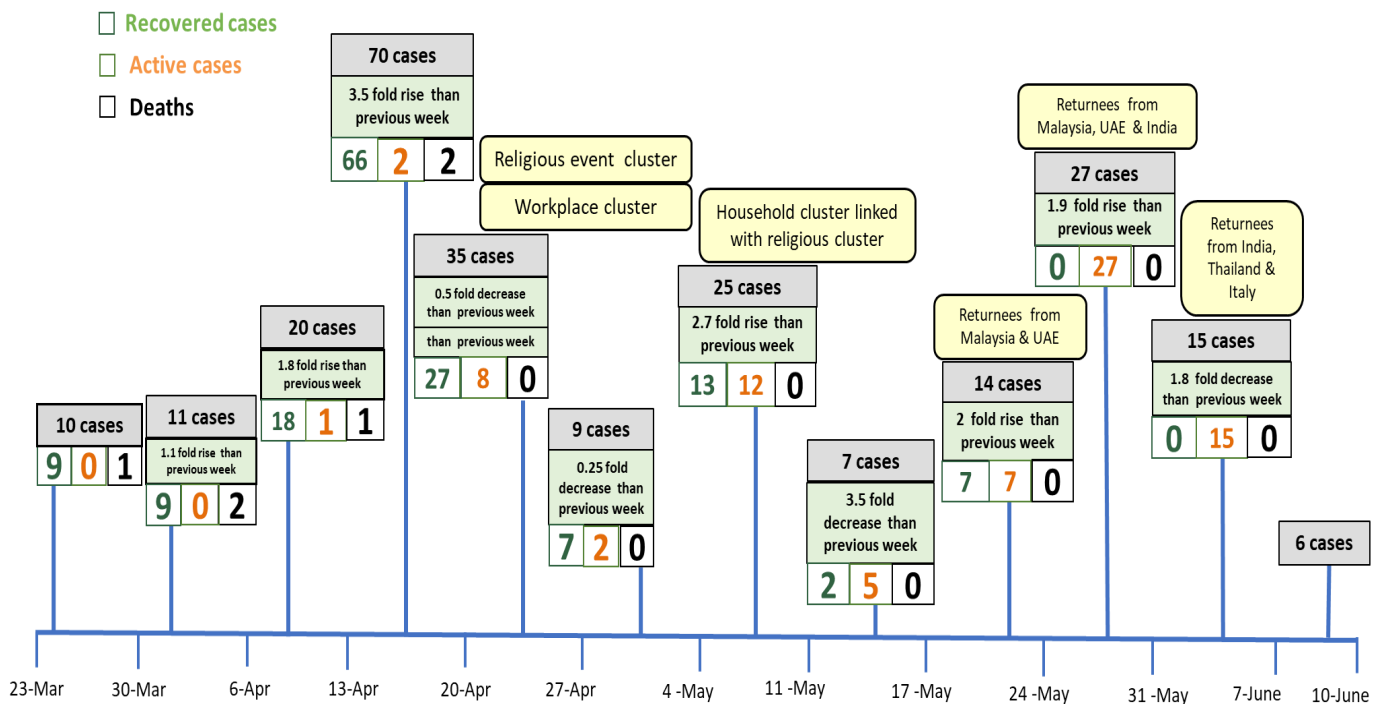
COVID-19 confirmed cases among tested by date (as of 10.6.2020)



Timeline of Preparedness and Response to COVID-19 in Myanmar (as of 10.6.2020)



Summary of new confirmed cases detection after first two cases (as of 10.6.2020)



- Confirmed cases were detected as peak in the 4th week after first confirmed cases due to religious event cluster.
- Confirmed cases were decreased but still raised than the first 3 weeks due to religious event cluster and workplace cluster.
- There were an increased in numbers of cases in the 7th week after the first two cases due to household cluster linked with religious cluster.
- Confirmed cases were detected by nearly two fold rise in the 9th and 10th weeks after first two cases because of returnees coming back by relief flights.