



Ministry of Health and Sports (Myanmar)

Department of Public Health

Central Epidemiology Unit

(20 December 2020)

Situation Report -257

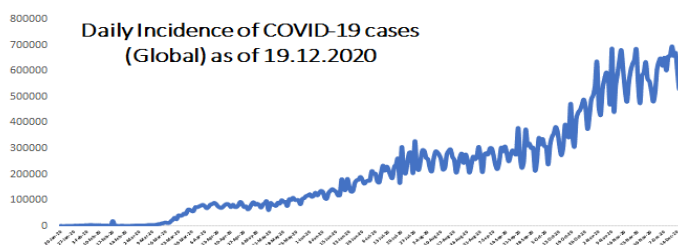
Coronavirus Disease 2019 (COVID-19)

WHO Coronavirus Disease (COVID-19) Dashboard data as of 5:15 PM CEST 19 December 2020

Confirmed cases
74,285,325

Deaths
1,669,522

Case Fatality Rate
2.2%



Myanmar Situation

Data as reported by States and Regions by 19 December 2020

Total Tested-1,574,128

115,187

Confirmed Cases

1,458,941

Negative

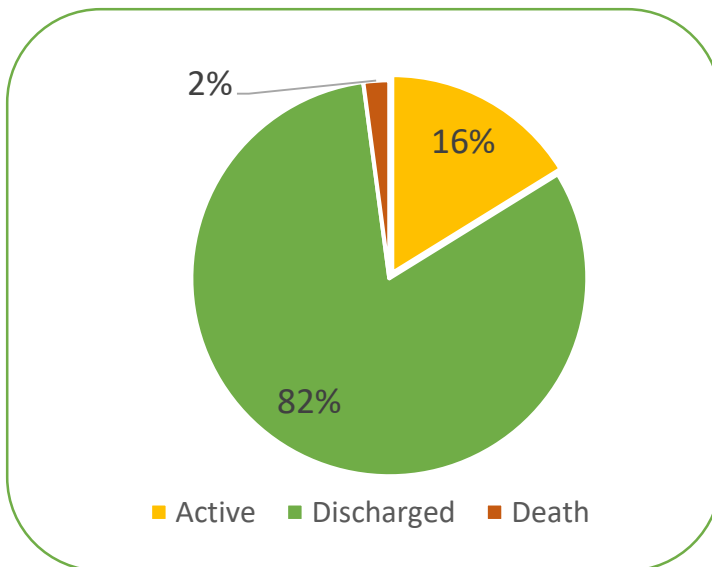
94,118

Discharged

2,424

Death

Current Situation of Confirmed cases (23.3.2020-19.12.2020), n=115,187



COVID-19 confirmed cases by two phases (23.3.2020 – 19-12-2020), n=115,187

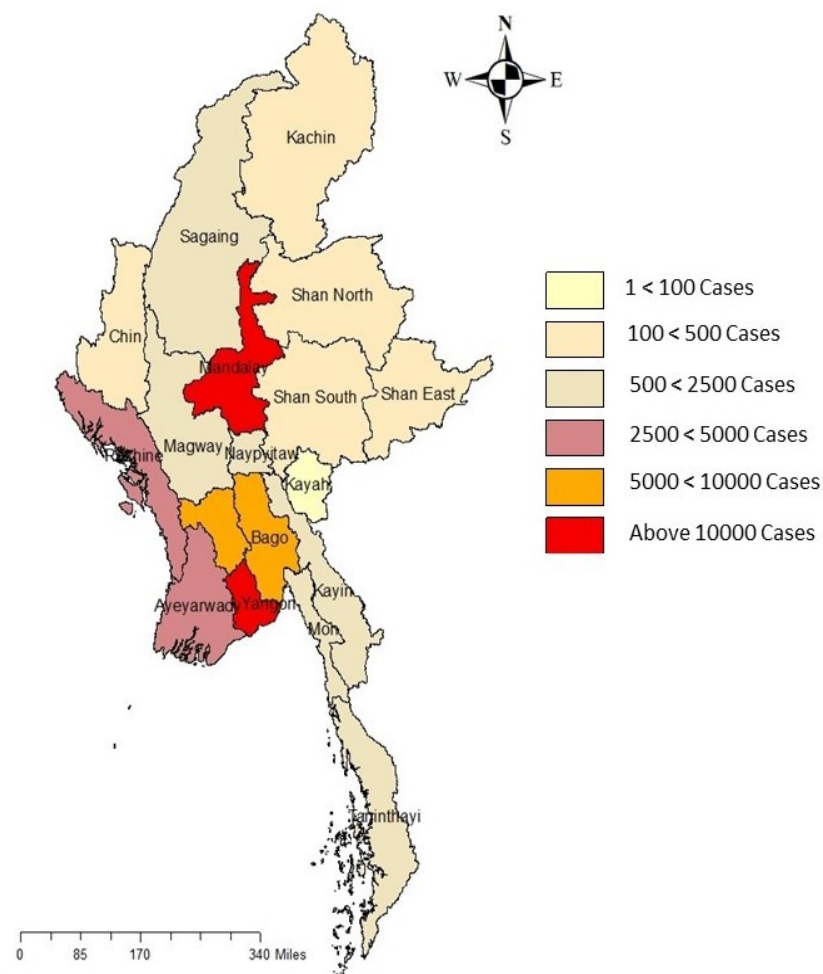
Date	Local transmission		Imported		Total cases	Total Death
	No. of cases	Death	No. of case	Death		
(23.3.2020-15.8.2020)	161	5	213	1	374	6
(16.8.2020-19.12.2020)	114483	2418	330	-	114813	2418
Total	114644	2423	543	1	115187	2424

COVID-19 confirmed cases and death by State/Region (23.3.2020 – 19-12-2020), n=115,187

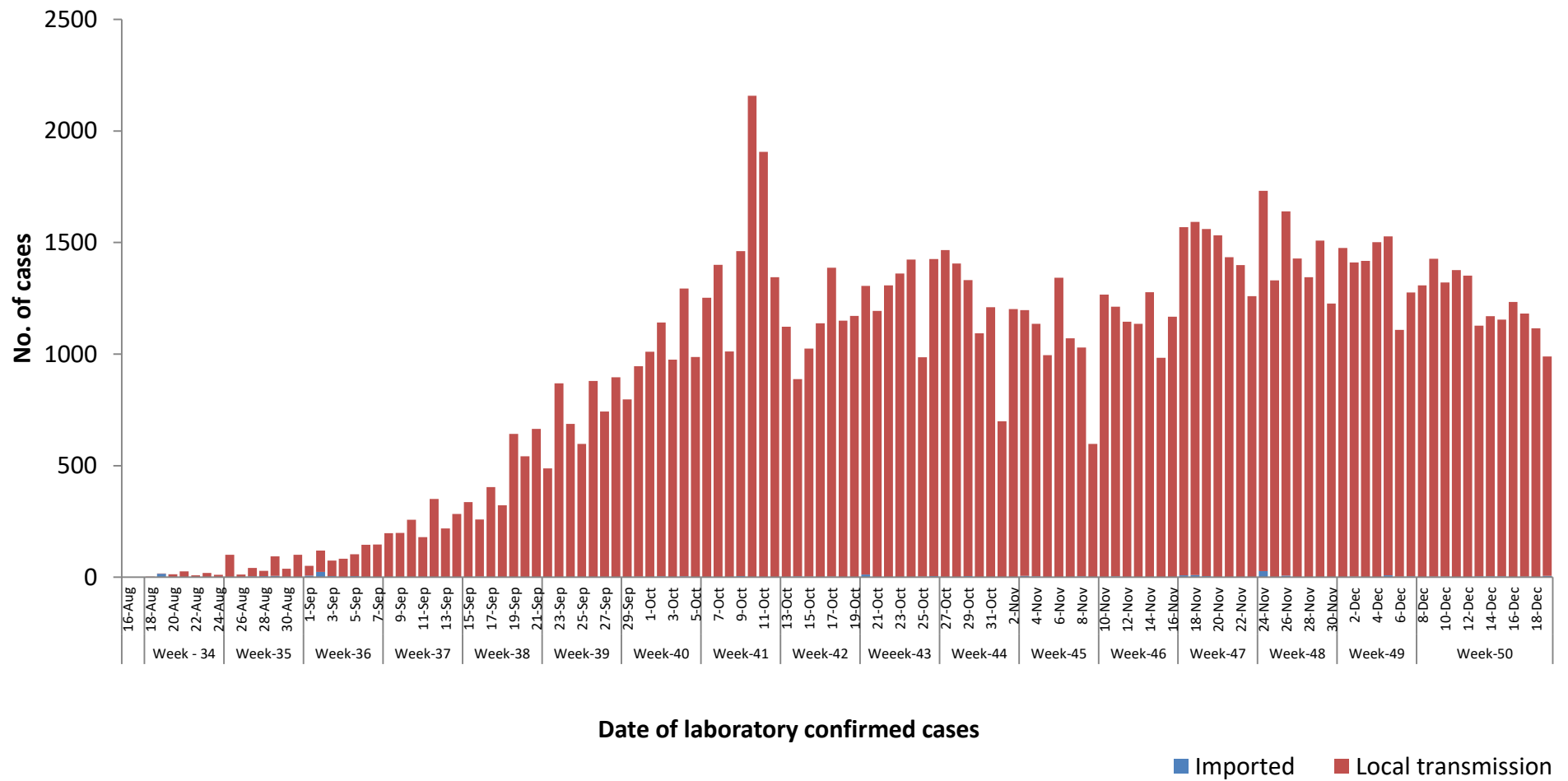
No	State/Region	COVID –19 Confirmed case	New confirmed cases within 24 hours	Deaths
1	Yangon	79,384	487	2,195
2	Mandalay	11,422	279	116
3	Bago	6,876	65	13
4	Ayeyarwaddy	4,118	27	27
5	Rakhine	4,075	11	28
6	Magway	2,337	38	1
7	Mon	2,025	13	17
8	Sagaing	1,509	22	6
9	Kayin	953	4	13
10	Naypyitaw	621	20	3
11	Thanintharyi	520	3	-
12	Kachin	459	8	-
13	Shan (South)	379	2	1
14	Chin	178	5	1
15	Shan (North)	162	4	2
16	Shan (East)	134	-	-
17	Kayah	35	1	1
Total		115,187	989	2,424

*No. of new cases by State and Region are counted according to epidemiology situation

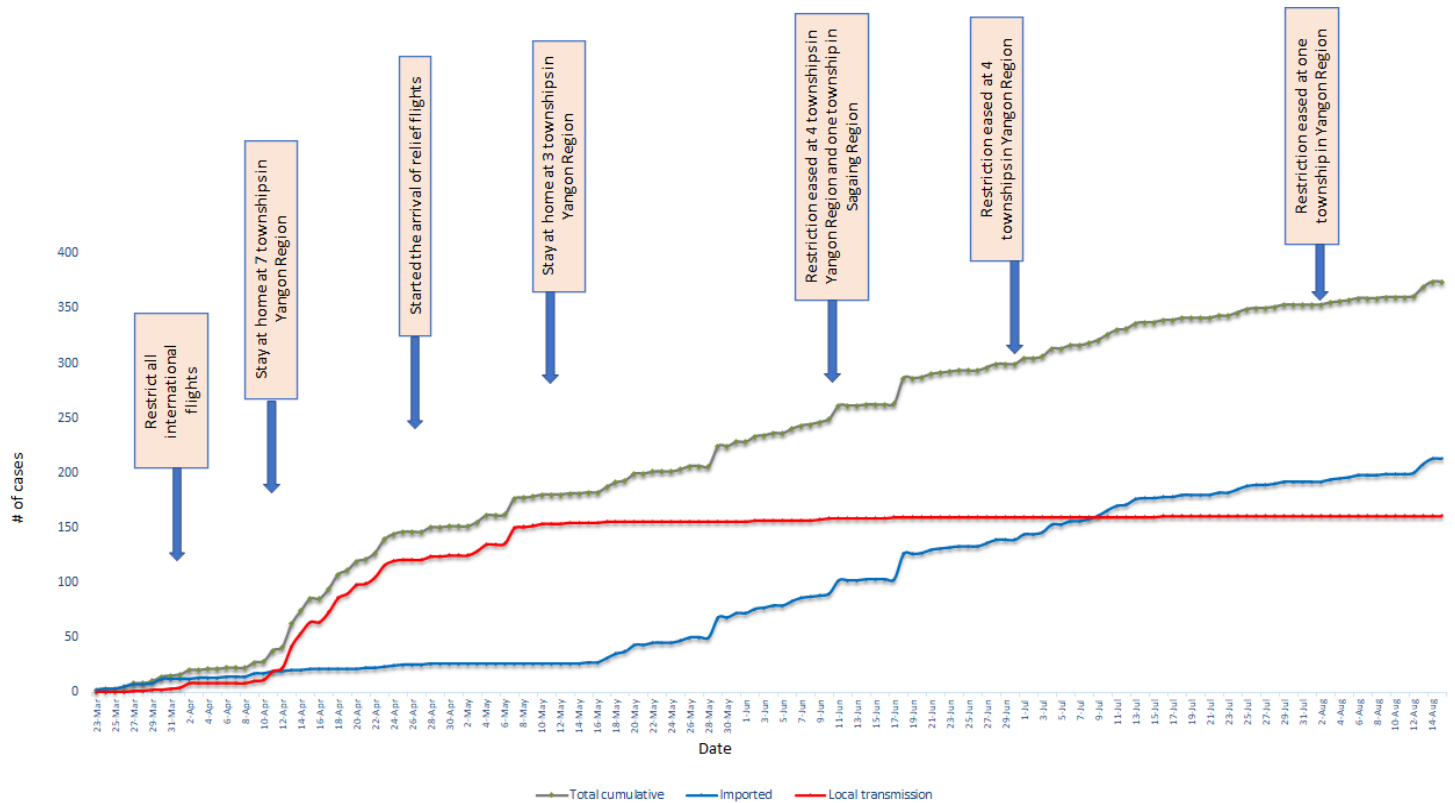
Map showing COVID-19 laboratory confirmed cases



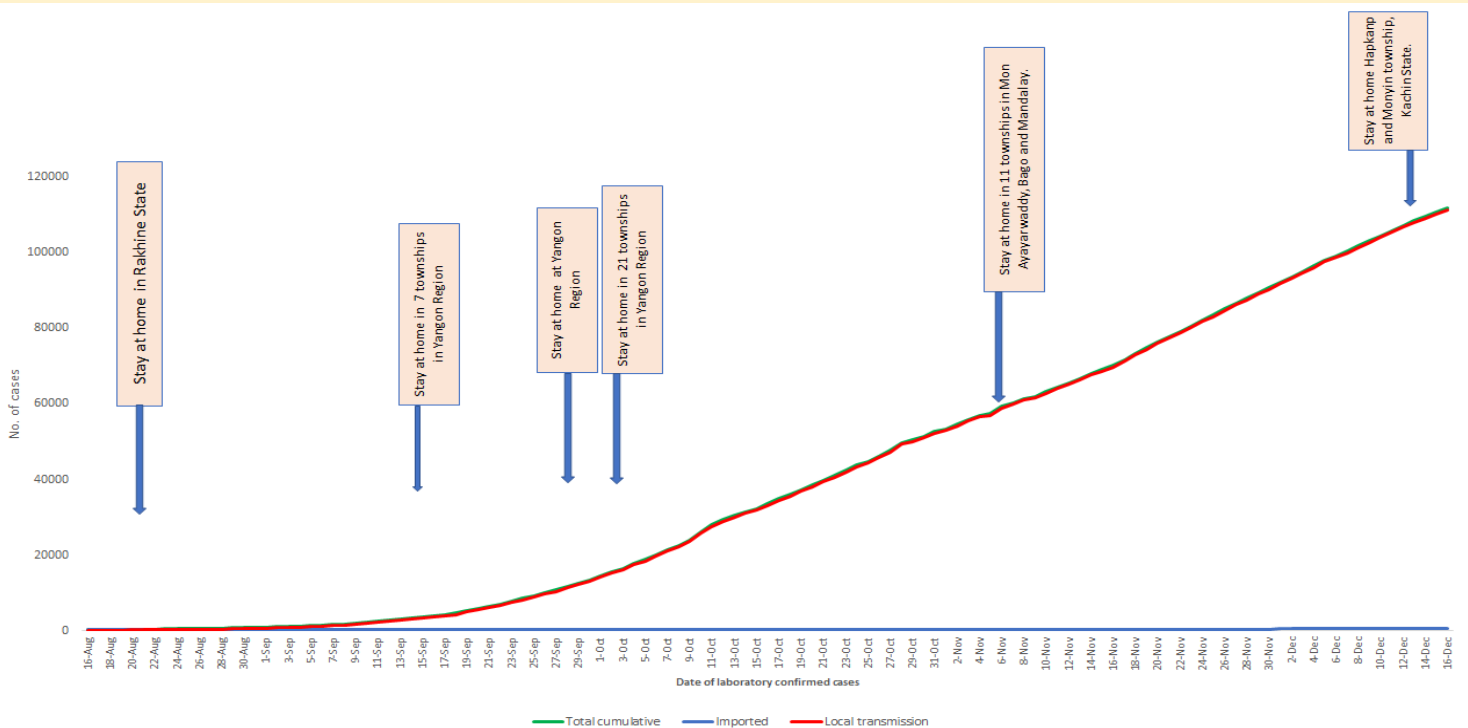
COVID-19 confirmed cases by types of transmissions (as of 19.12.2020) n=115,187



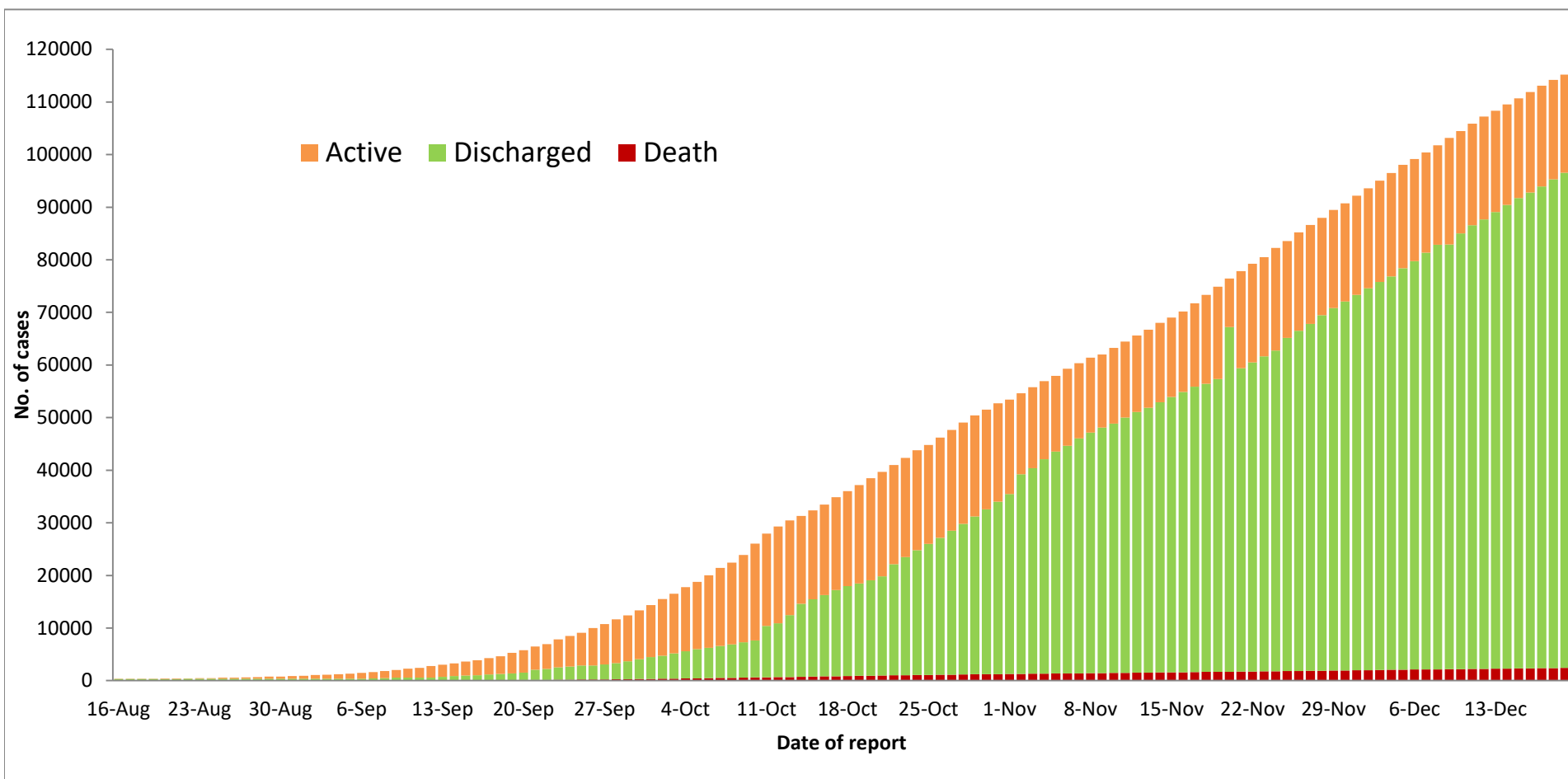
Total cumulative number of cases, imported and local transmission cases by date (23.3.2020- 15.8.2020), n= 374



Total cumulative number of cases, imported and local transmission cases by date (16.8.2020- 19.12.2020)



Cumulative Number of active confirmed cases, discharged and deaths (23.3.2020 – 19.12.2020), n (cumulative)=115,187



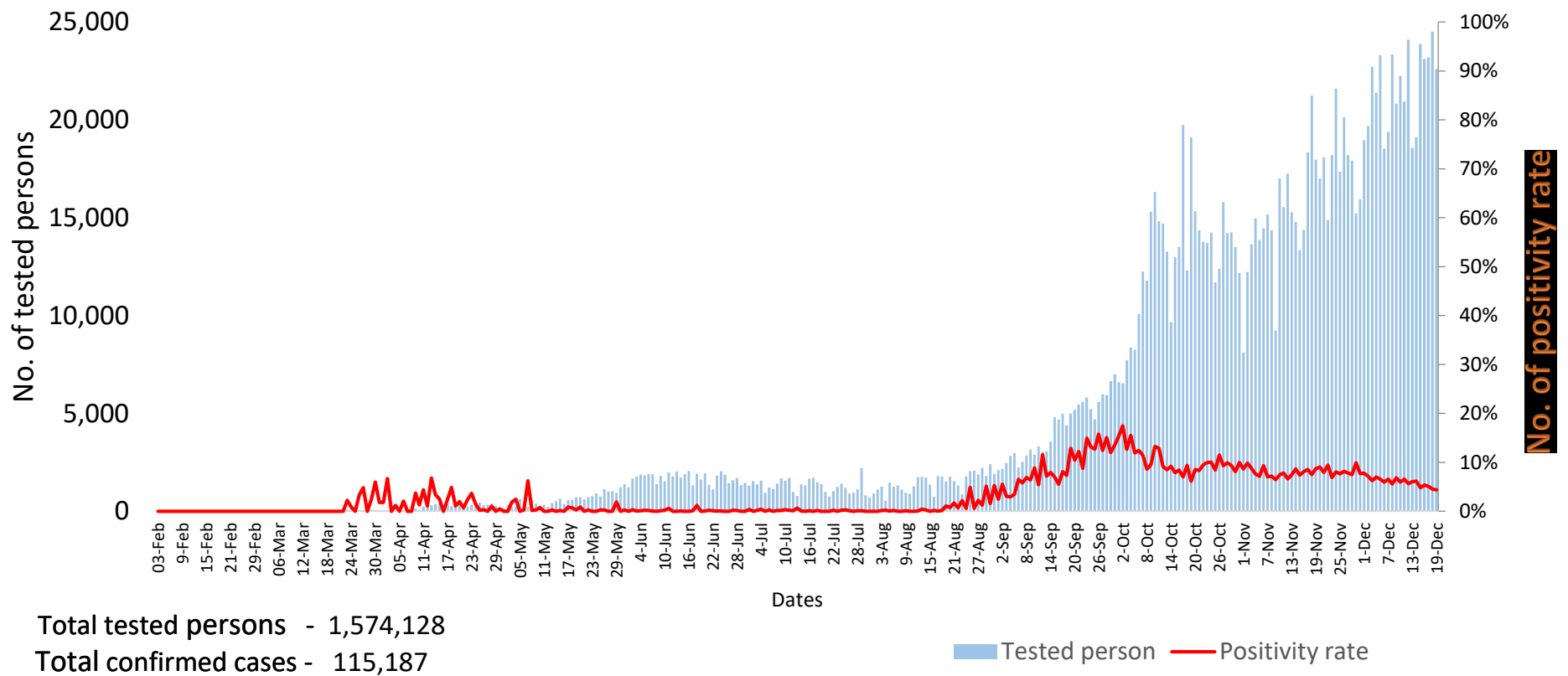
* Discharged criteria for COVID-19 patients was changed on 10.10.2020

Summary of current situation		
Type	New (18.12.2020-19.12.2020)	Total (on 19.12.2020)
Suspected and Person Under Investigation (PUI)	430	1,447
Hospital Quarantine	15	267
Facility Quarantine	4,335	65,993

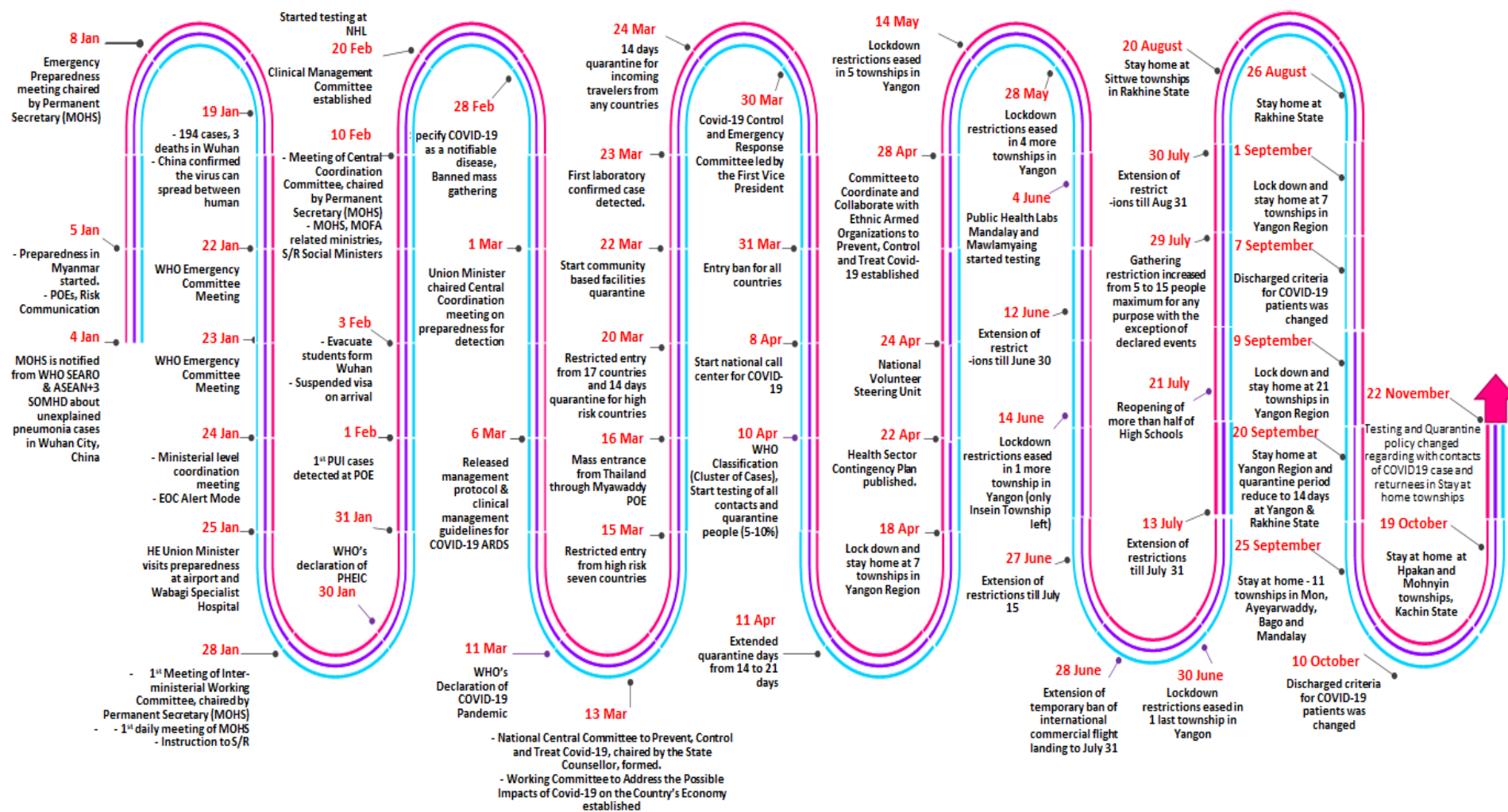
Person under Investigation (PUI) by State/Region hospitals (31.1.2020 – 19.12.2020) n= 56,781			No. of Facility Quarantine sites and Quarantined people on 19.12.2020			
No.	State/Region	PUI	No.	State/Region	No. of facilities	Total no. of quarantine
1	Yangon	39050	1	Ayeyarwaddy	1434	13910
2	Mandalay	7893	2	Bago	1155	7618
3	Ayeyarwaddy	1465	3	Mandalay	373	7605
4	Mon	1417	4	Sagaing	975	7340
5	Bago	1349	5	Yangon	198	6973
6	Kayin	1266	6	Magway	733	3975
7	Magway	951	7	Kayin	434	3546
8	Rakhine	794	8	Rakhine	369	2379
9	Thanintharyi	625	9	Shan South	118	2314
10	Shan (N)	571	10	Kachin	242	2079
11	Naypyitaw	316	11	Naypyitaw	13	2059
12	Sagaing	287	12	Tanintharyi	153	1686
13	Shan (E)	211	13	Shan North	456	1666
14	Shan (S)	207	14	Mon	23	1052
15	Kachin	178	15	Shan East	20	712
16	Chin	101	16	Chin	35	545
17	Kayah	100	17	Kayah	24	534
Total		56,781	Total		6,755	65,993

*Facility quarantine rule changed from 21 days to 14 days on 11-9-2020 while 7 days home quarantine rule remain unchanged.

COVID-19 positivity rate by date (as of 19.12.2020)



Timeline of Preparedness and Response to COVID-19 in Myanmar (as of 19.12.2020)



Hotline Number— 0673 420 268

Data source - CEU, DMS, NHL, PHL (MDY and MLM), DMR, DSGH, State and Region Health Departments