



Ministry of Health and Sports (Myanmar)

Department of Public Health

Central Epidemiology Unit

(6 May 2020)

Situation Report - 29

Data as reported by States and Regions by 9:00 PM MST 5 May 2020

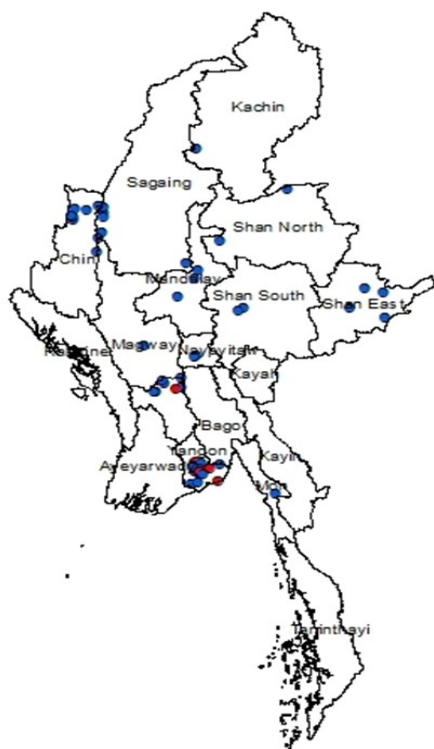
Global Situation

(according to WHO situation report - 106, data as of 14:30 MST 5 May 2020)

Confirmed cases	Deaths
3,517,345	243,401

Myanmar

Map showing COVID-19 laboratory confirmed cases



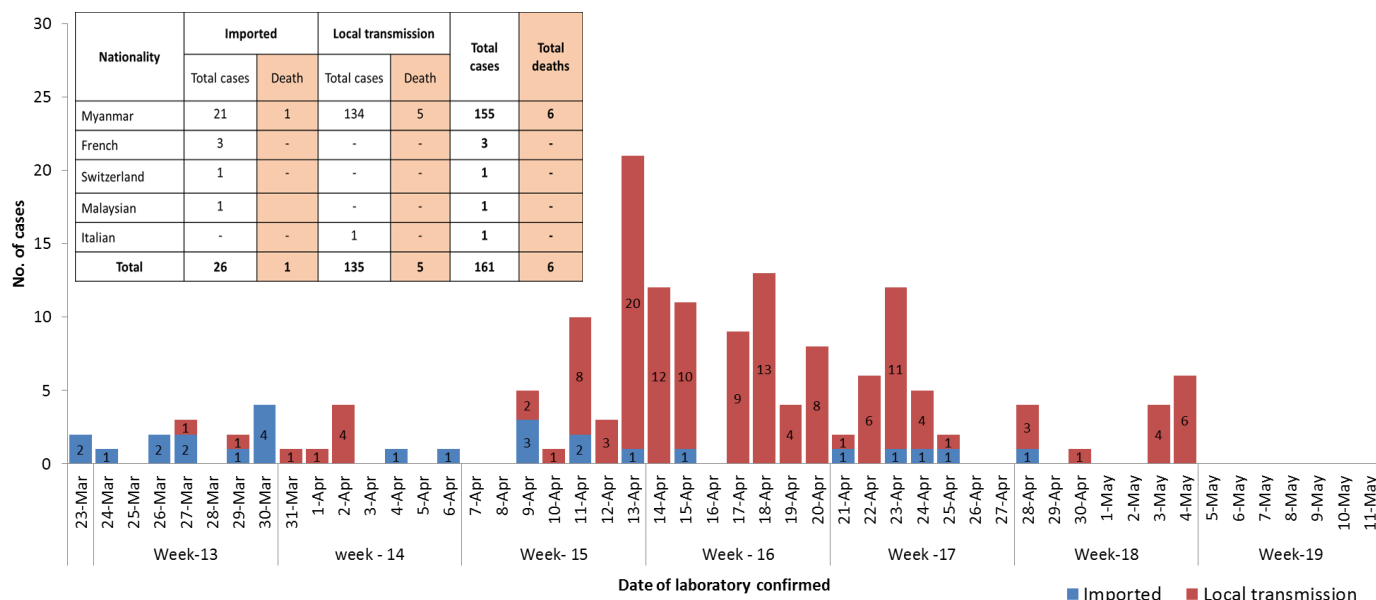
● Case
● Death

n (case) = 161

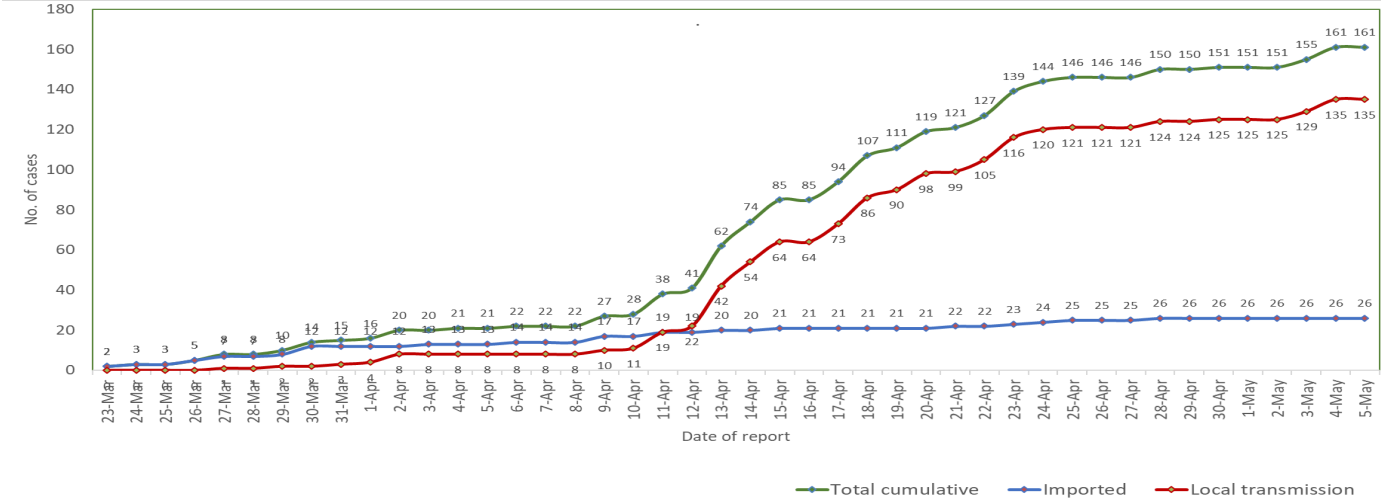
n (death) = 6

Total tested Specimen for COVID-19 (as of 5-5-2020, 9:00 PM)				
9,295				
Negative	Positive	Recovered	Deaths	
9,134	161	55	6	
No.	State/Region	COVID-19 Confirmed case	Recovered	Deaths
1.	Yangon	126	43 (4 new)	5
2.	Bago	7	3	1
3.	Sagaing	7	-	-
4.	Chin	6	1	-
5.	Shan(East)	3	2 (1 new)	-
6.	Mandalay	3	2 (1new)	-
7.	Shan(South)	2	1	-
8.	Shan(North)	2	-	-
9.	Naypyitaw	2	1	-
10.	Mon	1	1	-
11.	Magway	1	1	-
12.	Kachin	1	-	-
13.	Kayah	-	-	-
14.	Rakhine	-	-	-
15.	Ayeyarwaddy	-	-	-
16.	Kayin	-	-	-
17.	Thanintharyi	-	-	-
Total		161	55 (6 new)	6

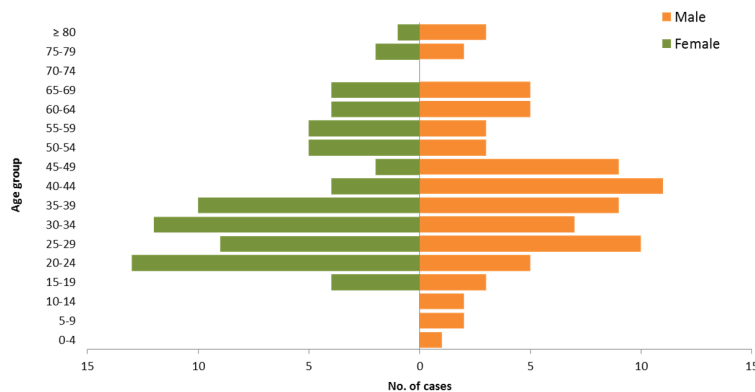
COVID-19 confirmed cases by date of laboratory confirmation (as of 5-5-2020,9:00 PM) n= 161



Total laboratory confirmed cases by date (as of 5.5.2020, 9:00 PM)



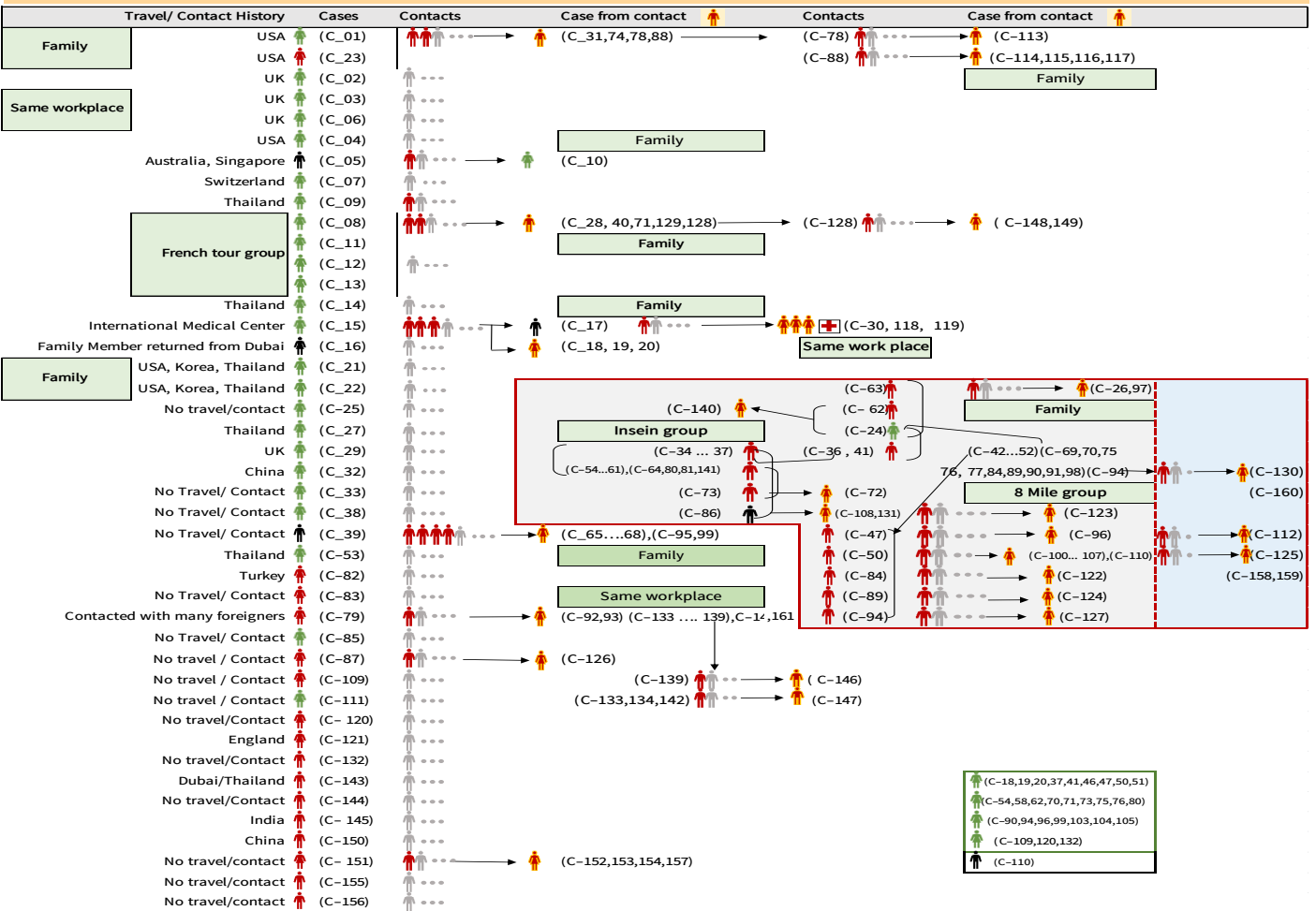
COVID –19 confirmed cases by age group (as of 5.5.2020), n= 161



SN	Type of cluster	No. of clusters	# of Cases
1	Religious event cluster	1	67
2	Family cluster	8	37
3	Work place cluster	3	24

- ◆ Minimum age - 1 year 6 month
- ◆ Maximum age - 87 year

Summary of COVID-19 confirmed cases (as of 5-5-2020) ,n= 3,539



Summary of situation (4.5.2020– 5.5.2020)

Type	New	Total (as of 5.5.2020)
Suspected and Person Under Investigation (PUI)	98	3,458
Hospital Quarantine	10	113
Facility Quarantine	3,652	46,254

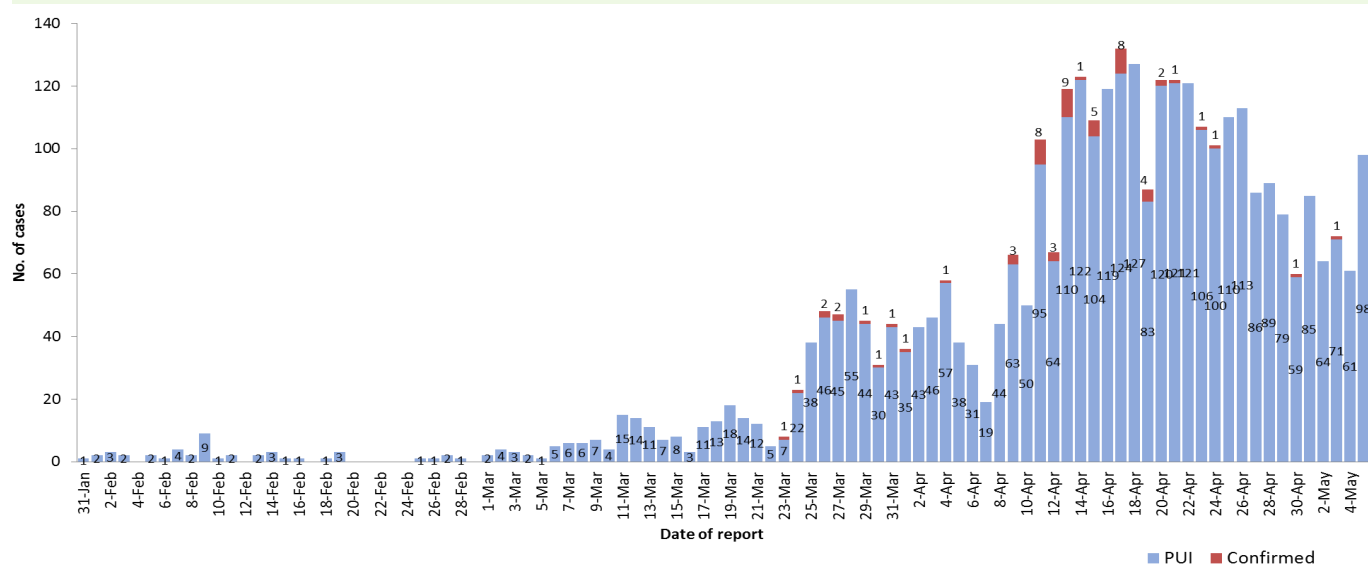
Person under Investigation (PUI) by State/Region hospitals (31.1.2020 – 5.5.2020) n= 3,458

No.	State/Region	PUI
1.	Yangon	1,710
2.	Mandalay	585
3.	Bago	156
4.	Shan (N)	141
5.	Magway	122
6.	Mon	114
7.	Kayin	114
8.	Ayeyarwaddy	78
9.	Shan (E)	72
10.	Shan (S)	69
11.	Sagaing	62
12.	Kayah	58
13.	Naypyitaw	58
14.	Rakhine	41
15.	Tanintharyi	39
16.	Kachin	25
17.	Chin	14
Total		3,458

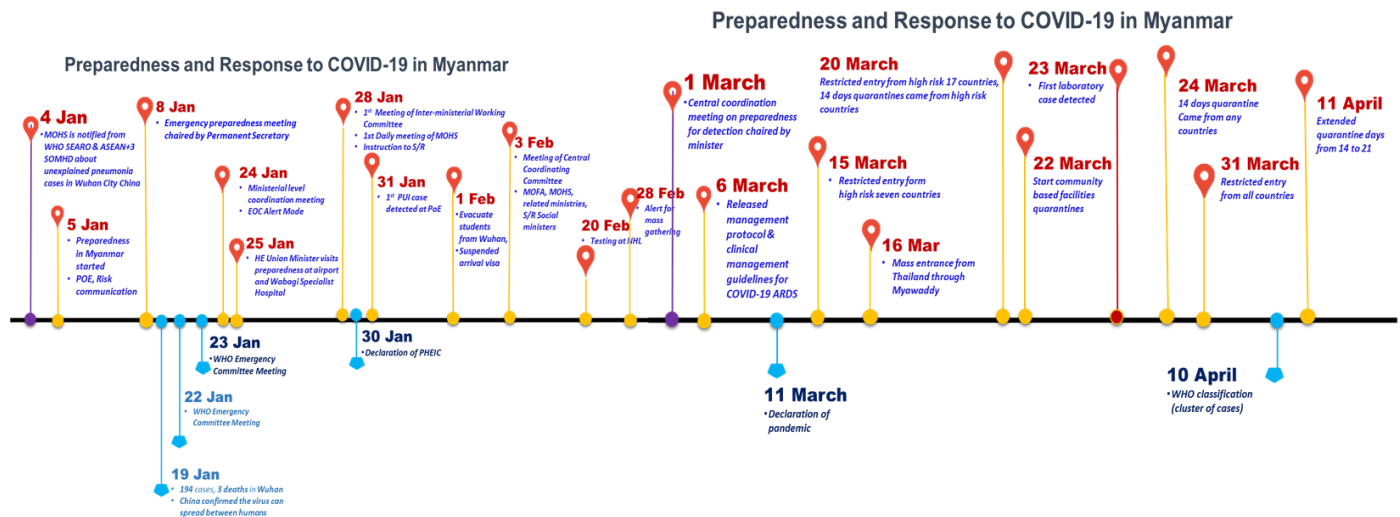
Summary of Facility Quarantine List (as of 5.5.2020)

No.	State/Region	No. of facilities	Total no. of quarantine people
1.	Sagaing	2,021	9,467
2.	Magway	2,470	6,975
3.	Kachin	533	6,227
4.	Mandalay	845	5,229
5.	Ayeyarwaddy	1,137	5,176
6.	Bago	442	2,564
7.	Shan (N)	320	2,441
8.	Rakhine	243	2,378
9.	Naypyitaw	19	1,365
10.	Yangon	45	1,102
11.	Shan(S)	110	826
12.	Tanintharyi	134	808
13.	Shan (E)	39	582
14.	Kayin	65	317
15.	Chin	25	308
16.	Kayah	17	271
17.	Mon	21	218
Total		8,486	46,254

COVID-19 laboratory confirmed cases among PUI by date of report(31.1.2020-5.5.2020),n(PUI)= 3,458, n (confirmed)=60



Preparedness and Response to COVID-19 in Myanmar



Summary of COVID-19 cases (as of 4.5.2020)

- ◆ The first two COVID-19 laboratory confirmed cases were detected on 23 March, 2020.
- ◆ The highest number of cases were found in week-16 (2nd week of April) i.e. about 3 week after first cases and 43% of cases are linked with religious event cluster.
- ◆ Numbers of COVID-19 confirmed cases were dramatically decreased at the end of April 2020 about 87% decreased in number in week-18 compared to week-16.

The possible reasons for this dramatic decreasing are-

- Rapid containment procedure of confirmed cases, Intensified contact tracing and quarantine procedure of those contacts interrupt transmission chain.
- Because of the restriction of all international flights since 30 March 2020, the number of Imported confirmed cases become less in number.
- Asymptomatic and mild cases in the community have not attended to the public hospitals and health facilities and because of this; those cases cannot be tested.
- Currently, not all of the suspected cases, contacts and quarantine people are not tested.
- Stay at home and social distancing are good practice to reduce and interrupt the disease transmission chain.
- Active community participation is crucial in COVID-19 control.

Hotline Number— 0673420268