



# Ministry of Health and Sports (Myanmar)

## Department of Public Health

### Central Epidemiology Unit

( 14 June 2020 )

Situation Report - 68

### Coronavirus Disease 2019 (COVID-19)

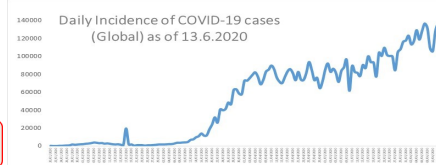
Data as reported by States and Regions by 1:00 AM MST 14 June 2020

**Global Situation**  
(WHO situation report - 145)  
data as of 14:30 MST 13 June 2020

**Confirmed cases**  
**7,553,182**

**Deaths**  
**423,349**

**Case Fatality Rate**  
**5.6 %**



### Myanmar Situation

**Total tested**  
**49,729**

**Confirmed cases**  
**261**

**Negative**  
**49,468**

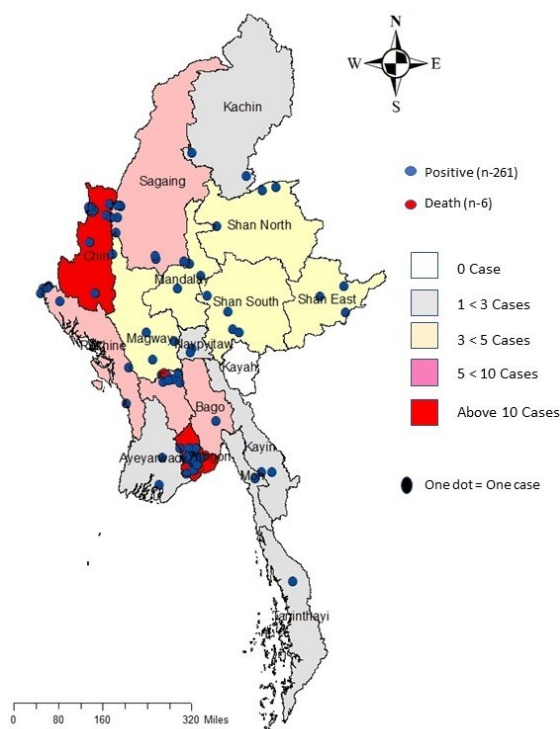
**Recovered**  
**167**  
63.9 % of confirmed cases

**Active**  
**88**  
33.7% of confirmed cases

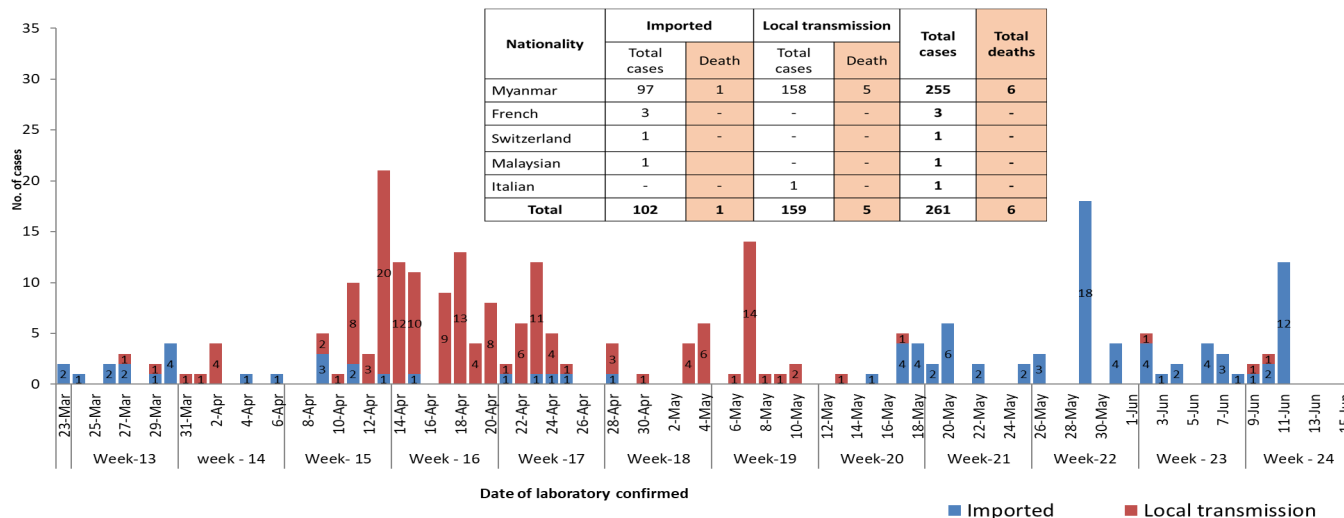
**Death**  
**6**  
2.2% of confirmed cases

No.	State/Region	COVID -19 Confirmed case	Recovered	Deaths
1.	Yangon	201	129	5
2.	Chin	10	5	-
3.	Sagaing	9	7	-
4.	Bago	8	6	1
5.	Rakhine	7	-	-
6.	Shan(South)	4	2	-
7.	Mandalay	3	3	-
8.	Shan(East)	3	3	-
9.	Shan(North)	3	2	-
10.	Magway	3	2	-
11.	Naypyitaw	2	2	-
12.	Kayin	2	1	-
13.	Ayeyarwaddy	2	2	-
14.	Kachin	2	1	-
15.	Mon	1	1	-
16.	Thanintharyi	1	1	-
17.	Kayah	-	-	-
<b>Total</b>		<b>261</b>	<b>167</b>	<b>6</b>

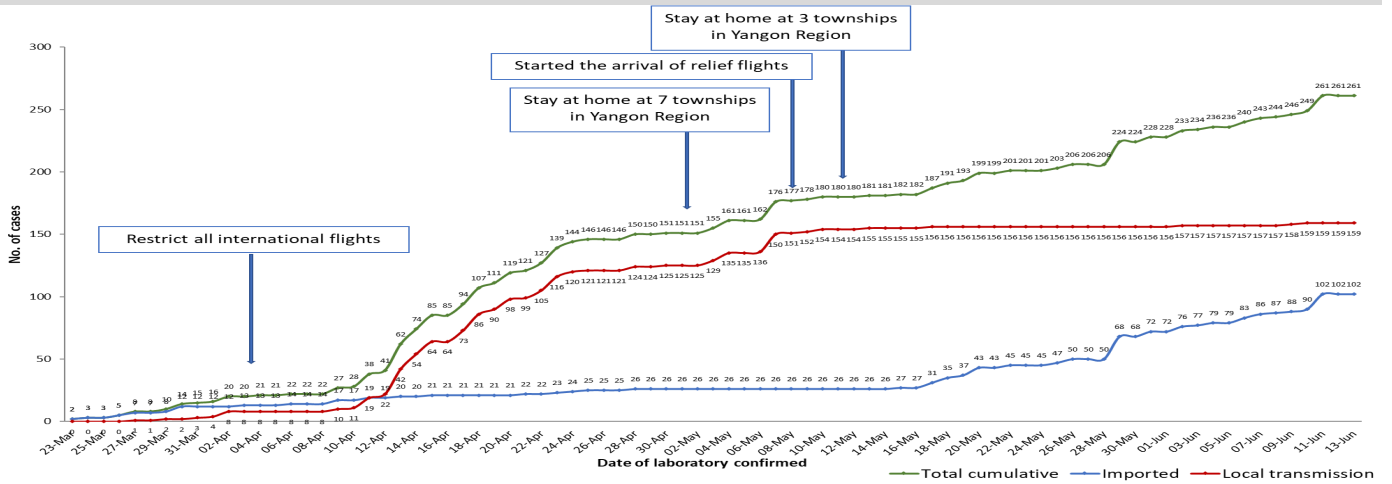
Map showing COVID-19 laboratory confirmed cases



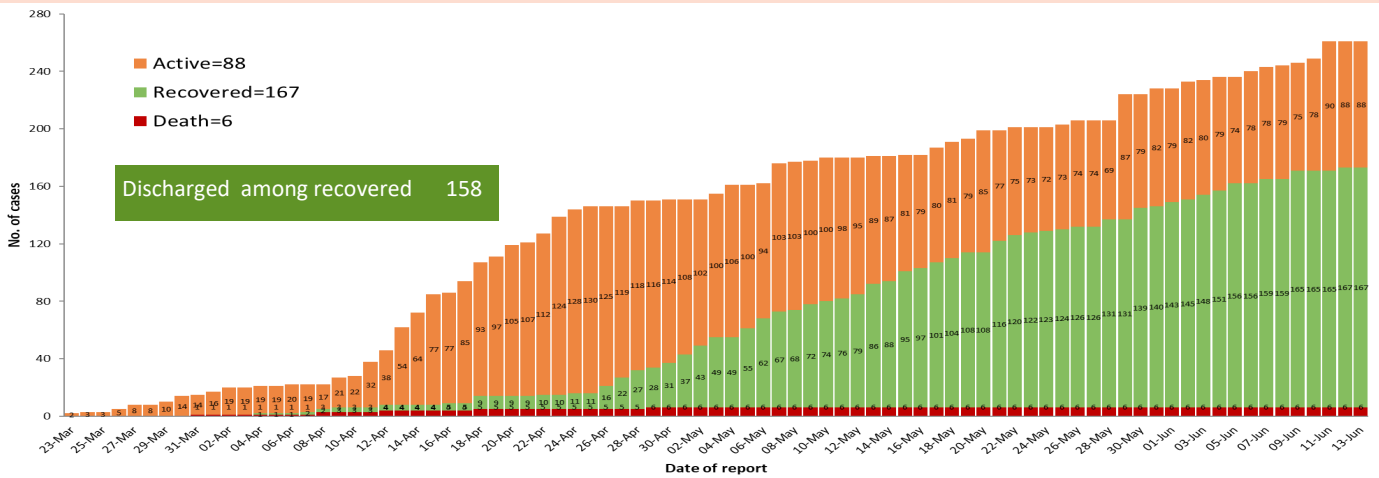
COVID-19 confirmed cases by types of transmissions (as of 14-6-2020, 1:00 am) n=261



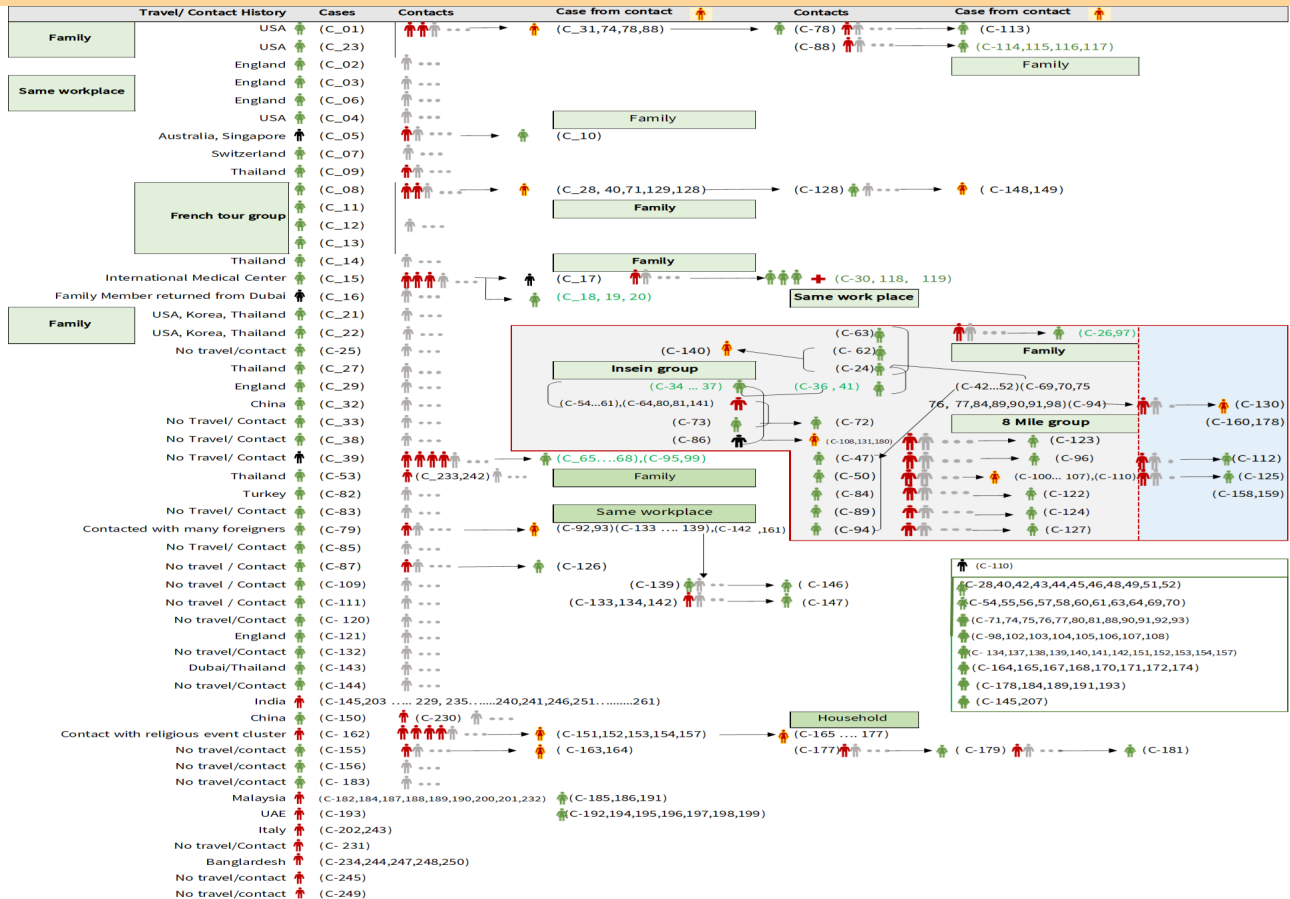
## Total laboratory confirmed cases by date (as of 14.6.2020, 1:00 am), n = 261



## Cumulative Number of active confirmed cases, recovered and deaths (23.3.2020 – 13-6-2020), n (cumulative)=261



## Summary of COVID-19 confirmed cases (as of 13-6-2020), n (contacts)= 5,362



## Summary of current situation

Type	New (12.6.2020-13.6.2020)	Total (on 13.6.2020)
Suspected and Person Under Investigation (PUI)	37	246
Hospital Quarantine	20	89
Facility Quarantine	1,648	43,593

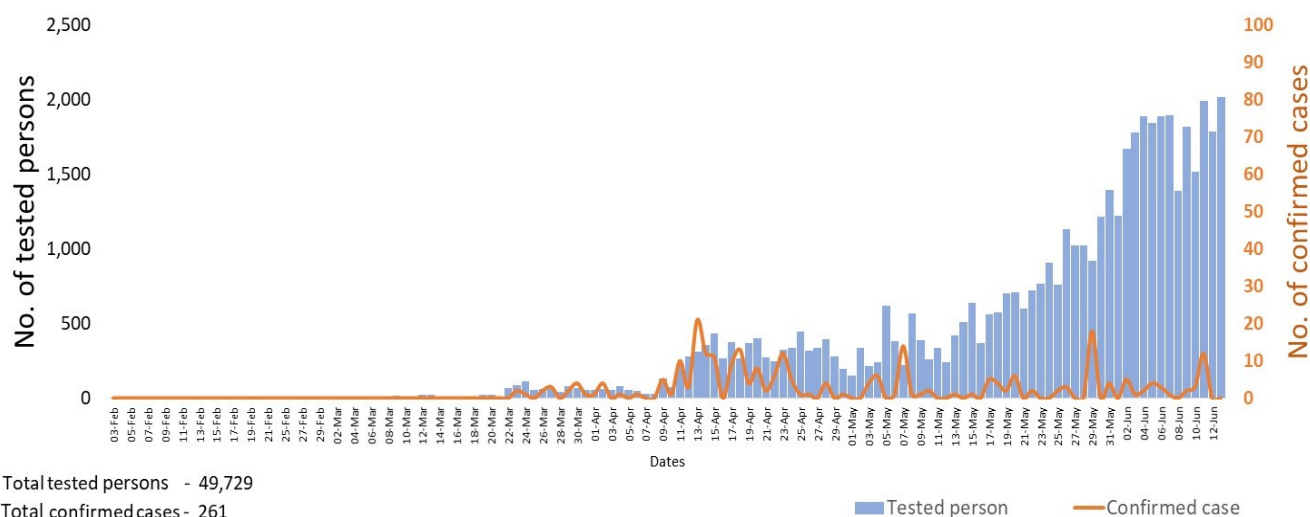
### Person under Investigation (PUI) by State/Region hospitals (12.6.2020 – 13.6.2020) n= 5,486

No.	State/Region	PUI
1.	Yangon	2,829
2.	Mandalay	1,014
3.	Mon	200
4.	Kayin	200
5.	Shan(N)	196
6.	Magway	181
7.	Bago	178
8.	Shan ( E )	112
9.	Ayeyarwaddy	100
10.	Shan(S)	94
11.	Sagaing	80
12.	Kayah	76
13.	Naypyitaw	61
14.	Rakhine	60
15.	Thanintharyi	53
16.	Kachin	30
17.	Chin	22
<b>Total</b>		<b>5,486</b>

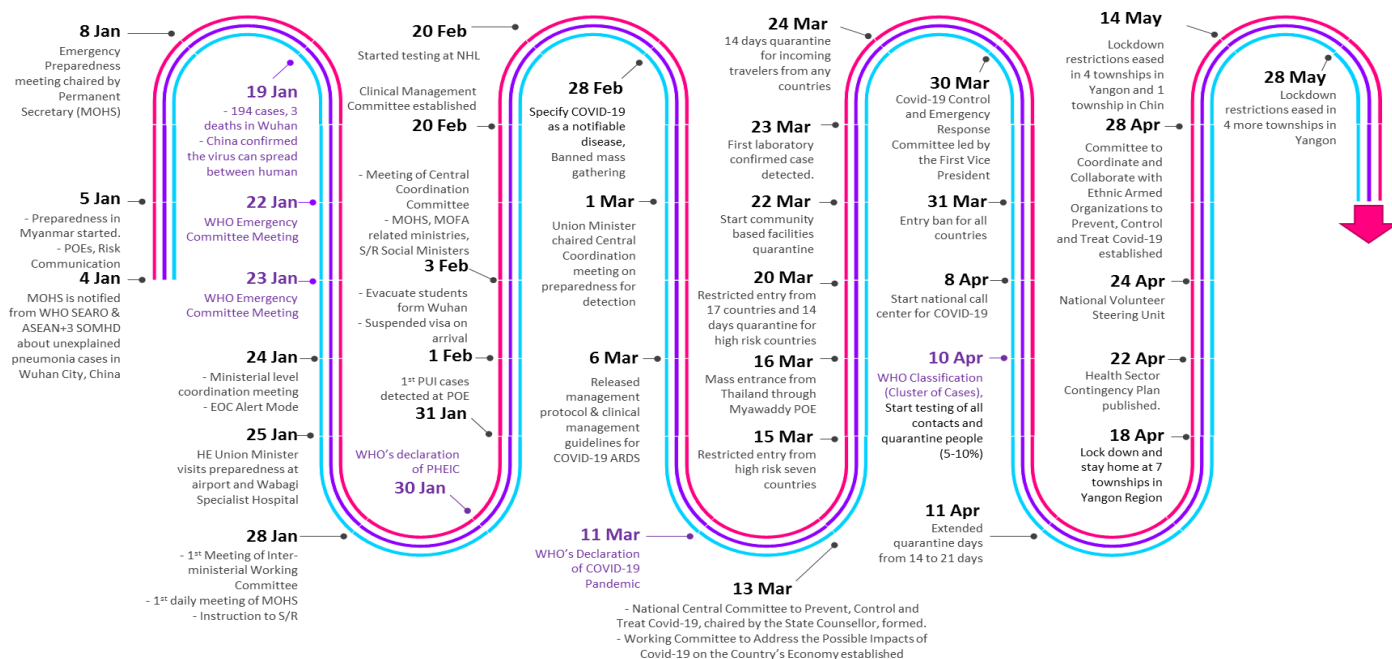
### No. of Facility Quarantine sites and Quarantined people on 13.6.2020

No.	State/Region	No. of facilities	Total no. of quarantine
1.	Magway	2,647	6,356
2.	Bago	493	6,951
3.	Kayin	859	4,254
4.	Mon	252	3,544
5.	Kachin	330	3,527
6.	Mandalay	257	2,810
7.	Yangon	79	2,673
8.	Rakhine	582	2,506
9.	Sagaing	996	2,500
10.	Ayeyarwaddy	564	2,011
11.	Shan S	122	1,768
12.	Shan North	401	1,523
13.	Tanintharyi	189	1,342
14.	Naypyitaw	19	1,228
15.	Chin	32	254
16.	Kayah	18	216
17.	Shan East	11	130
<b>Total</b>		<b>7,851</b>	<b>43,593</b>

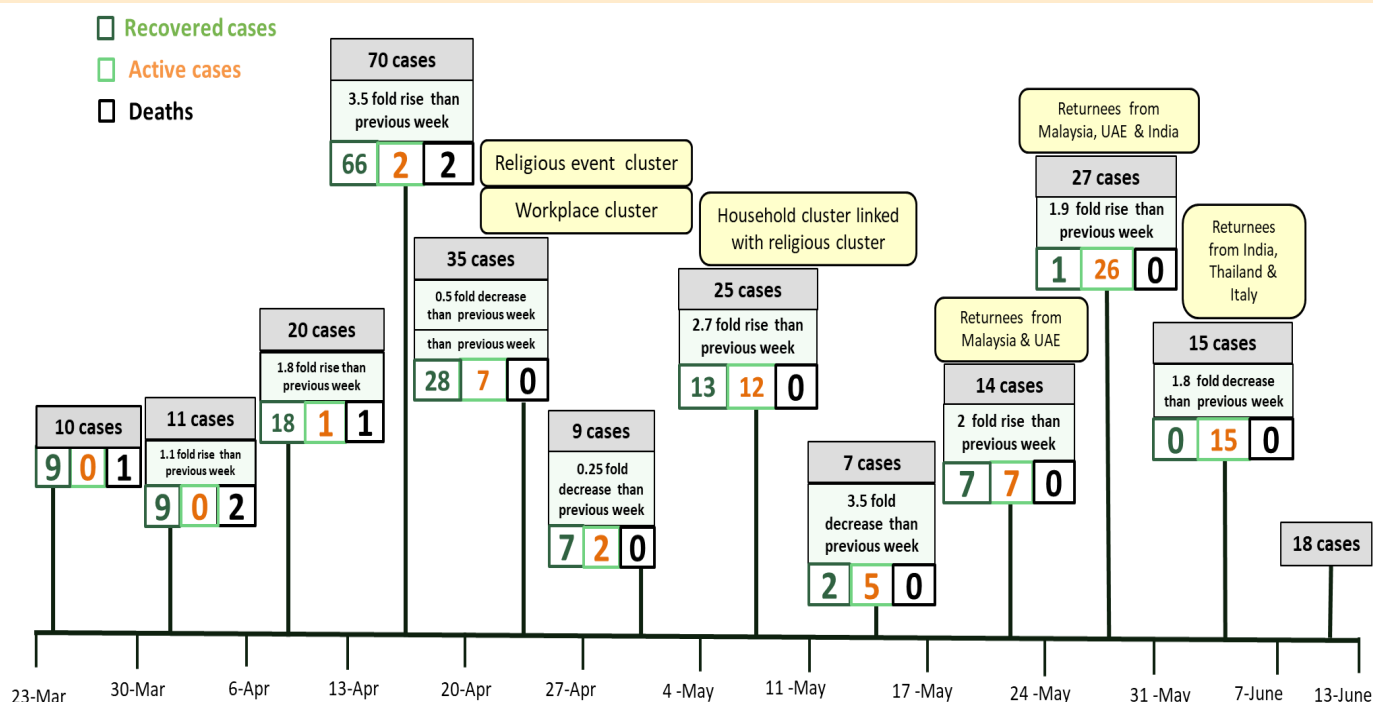
## COVID-19 confirmed cases among tested by date (as of 13.6.2020)



## Timeline of Preparedness and Response to COVID-19 in Myanmar (as of 13.6.2020)



## Summary of new confirmed cases detection after first two cases (as of 13.6.2020)



- Confirmed cases were detected as a peak in the 4th week after first confirmed cases due to the religious event cluster.
- Confirmed cases were decreased but still raised than the first 3 weeks due to the religious event cluster and workplace cluster.
- There were an increased in numbers of cases in the 7th week after the first two cases due to the household cluster linked with a religious cluster.
- Confirmed cases were detected by a nearly two-fold rise in the 9th and 10th weeks after the first two cases because of returnees coming back by relief flights.