



# Ministry of Health and Sports (Myanmar)

## Department of Public Health

### Central Epidemiology Unit

(28 August 2020)

#### Coronavirus Disease 2019 (COVID-19)

Situation Report - 143

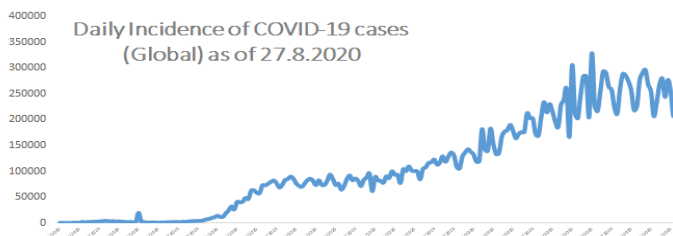
Data as reported by States and Regions by 27 August 2020

WHO Coronavirus Disease (COVID-19) Dashboard data as of 2:44 PM CEST 27 August 2020

**Confirmed  
cases  
24,021,218**

**Deaths  
821,462**

**Case Fatality Rate  
3.4 %**



#### Myanmar Situation

Total Tested

**153,821**

Confirmed Cases

**628**

Negative

**153,193**

Recovered

**349**

55.6% of  
Confirmed cases

Active

**273**

43.5% of  
Confirmed cases

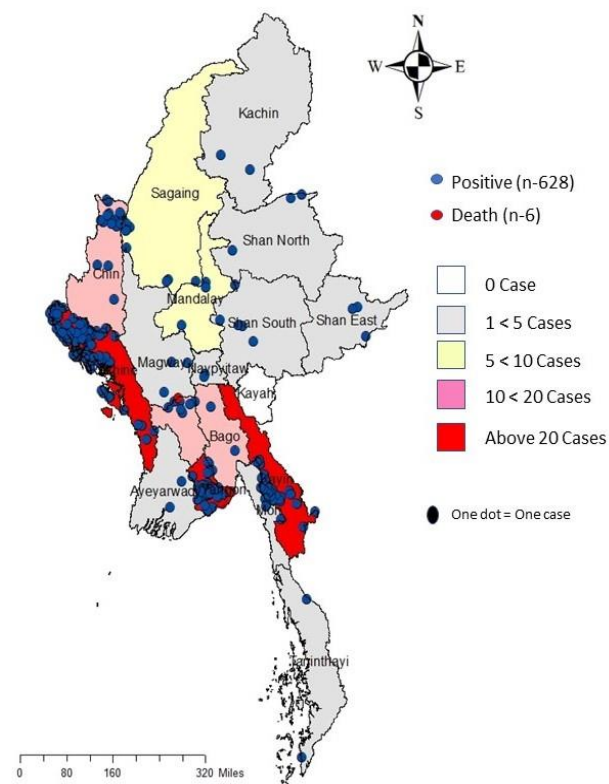
Death

**6**

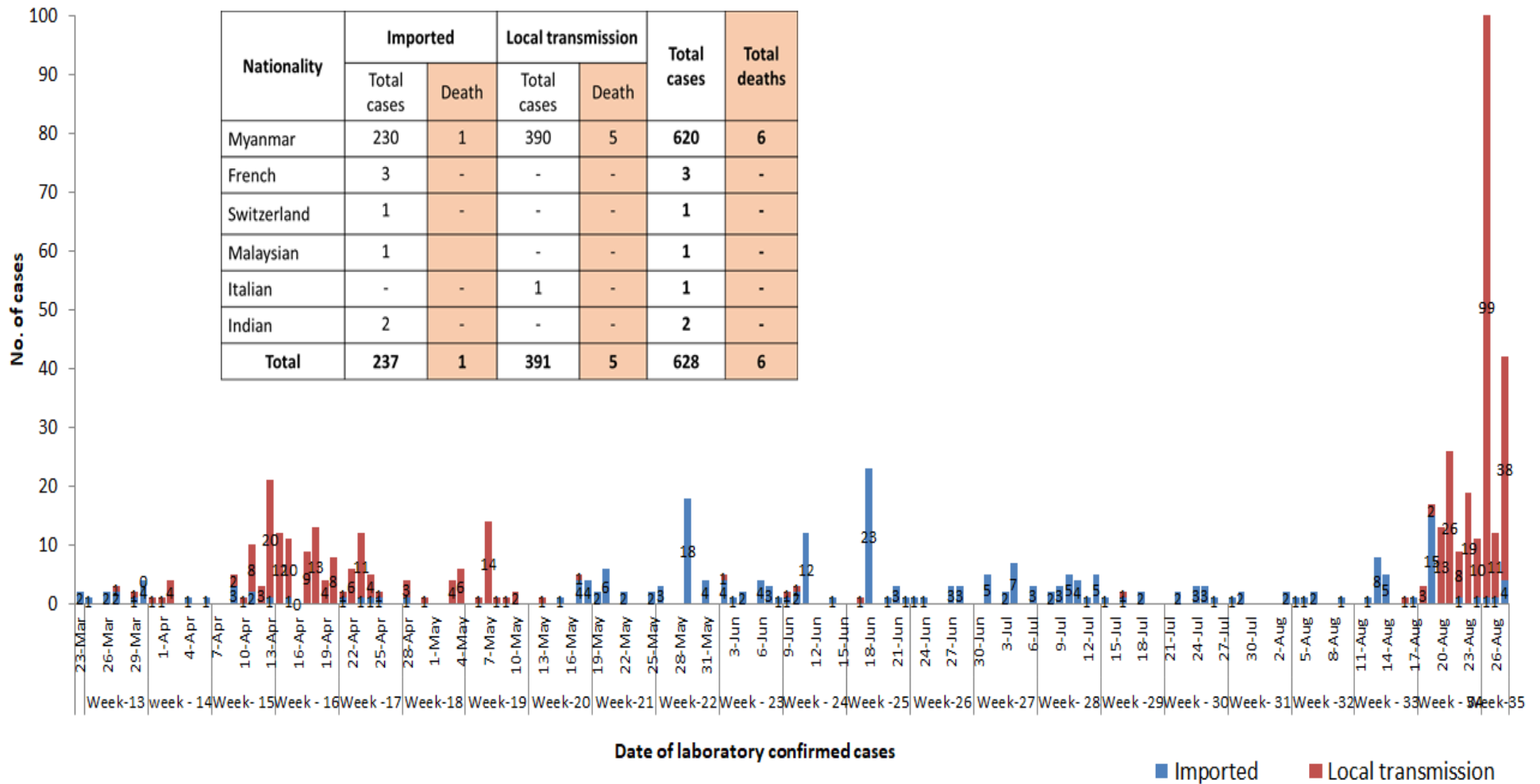
1% of Confirmed cases

| No           | State/Region | COVID –19 Confirmed case | Recovered  | Deaths   |
|--------------|--------------|--------------------------|------------|----------|
| 1            | Yangon       | 301(8 New)               | 247        | 5        |
| 2            | Rakhine      | 232(32 New)              | 16         | -        |
| 3            | Kayin        | 29                       | 29         | -        |
| 4            | Chin         | 18                       | 13         | -        |
| 5            | Bago         | 10(1 New)                | 8          | 1        |
| 6            | Sagaing      | 9                        | 9          | 1        |
| 7            | Mandalay     | 5(1 New)                 | 4          | -        |
| 8            | Shan (South) | 4                        | 4          | -        |
| 9            | Shan (East)  | 3                        | 3          | -        |
| 10           | Shan (North) | 3                        | 3          | -        |
| 11           | Magway       | 3                        | 3          | -        |
| 12           | Mon          | 3                        | 2          | -        |
| 13           | Ayeyarwaddy  | 2                        | 2          | -        |
| 14           | Kachin       | 2                        | 2          | -        |
| 15           | Naypyitaw    | 2                        | 2          | -        |
| 16           | Thanintharyi | 2                        | 2          | -        |
| 17           | Kayah        | -                        | -          | -        |
| <b>Total</b> |              | <b>628(42 New)</b>       | <b>349</b> | <b>6</b> |

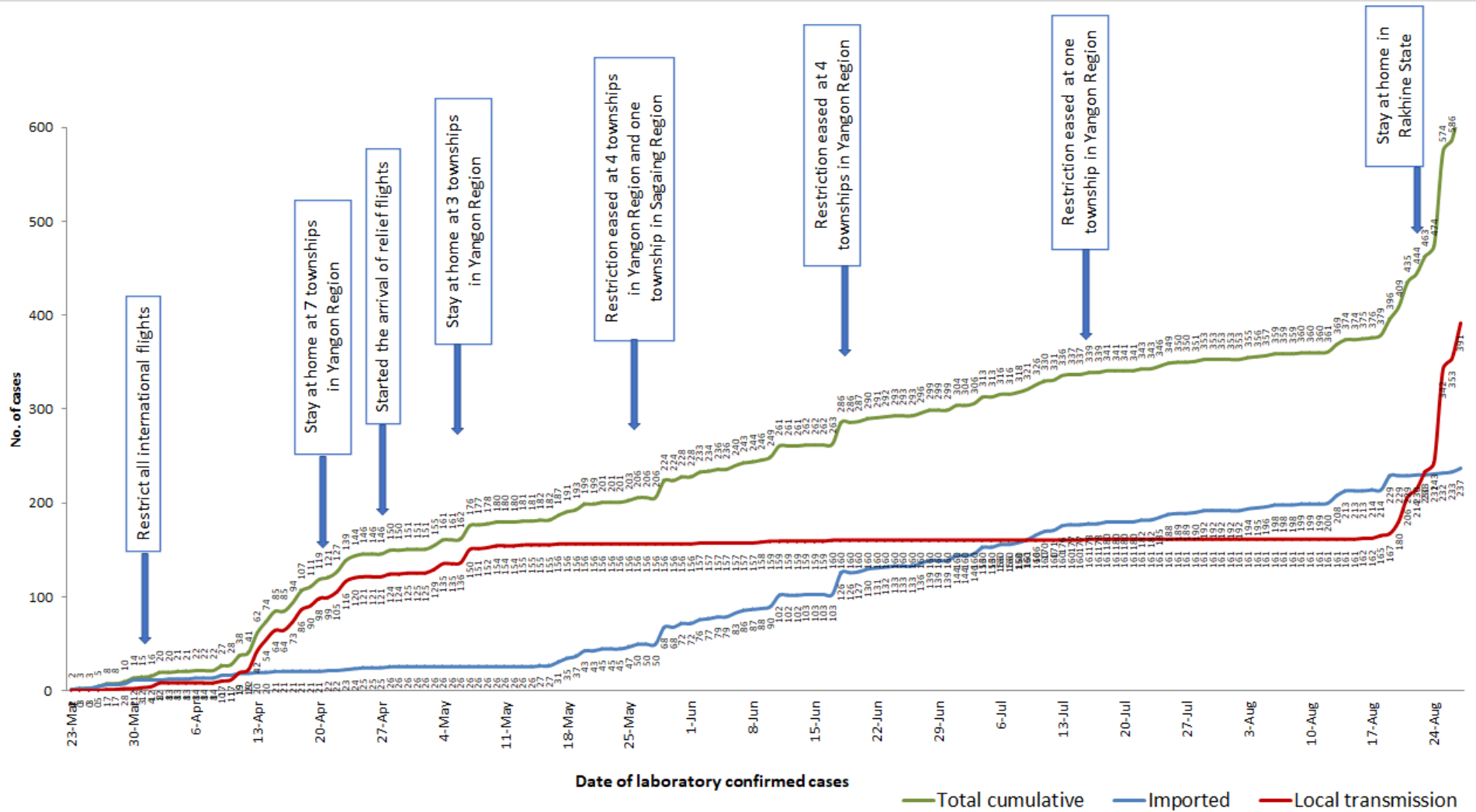
Map showing COVID-19 laboratory confirmed cases



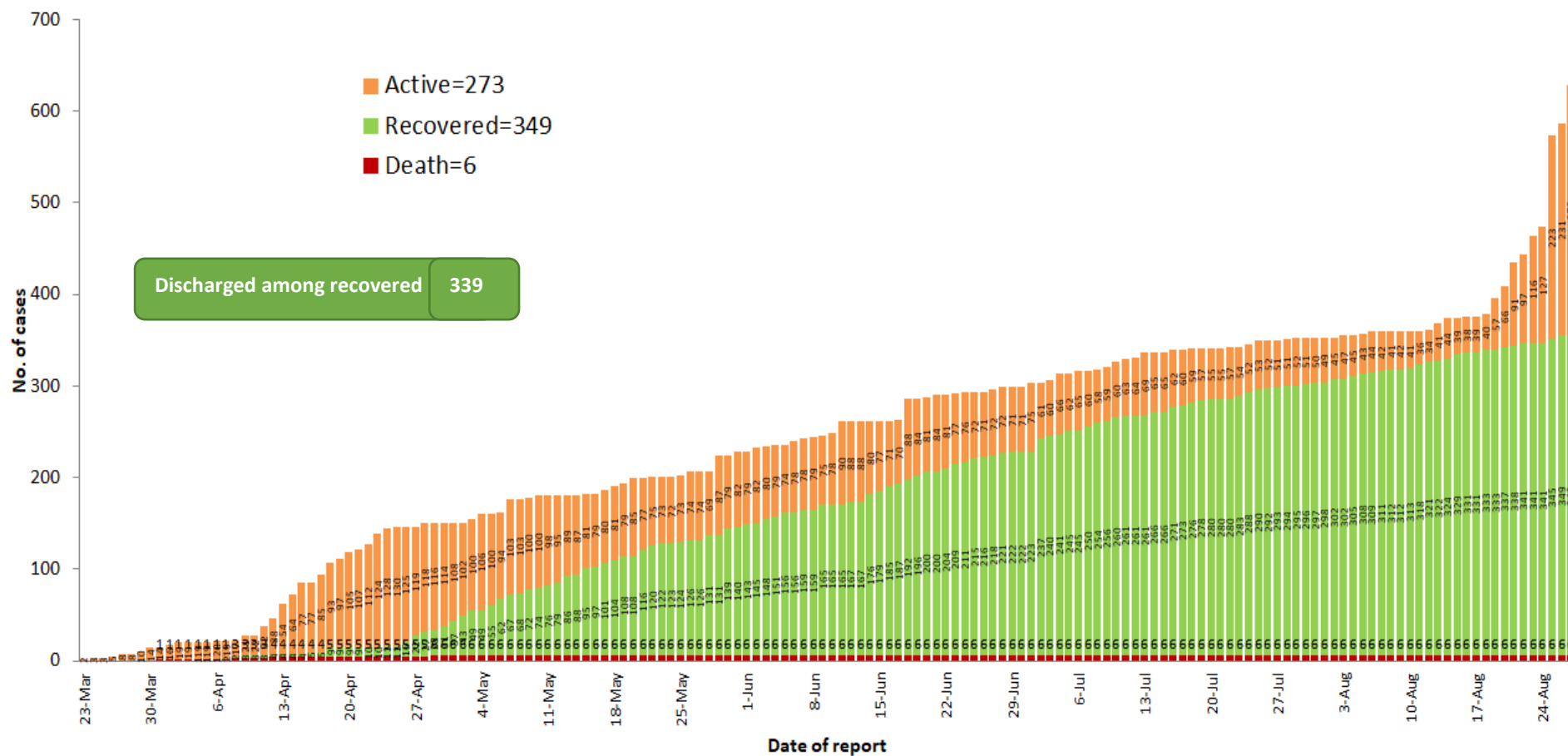
## COVID-19 confirmed cases by types of transmissions (as of 27.8.2020) n=628



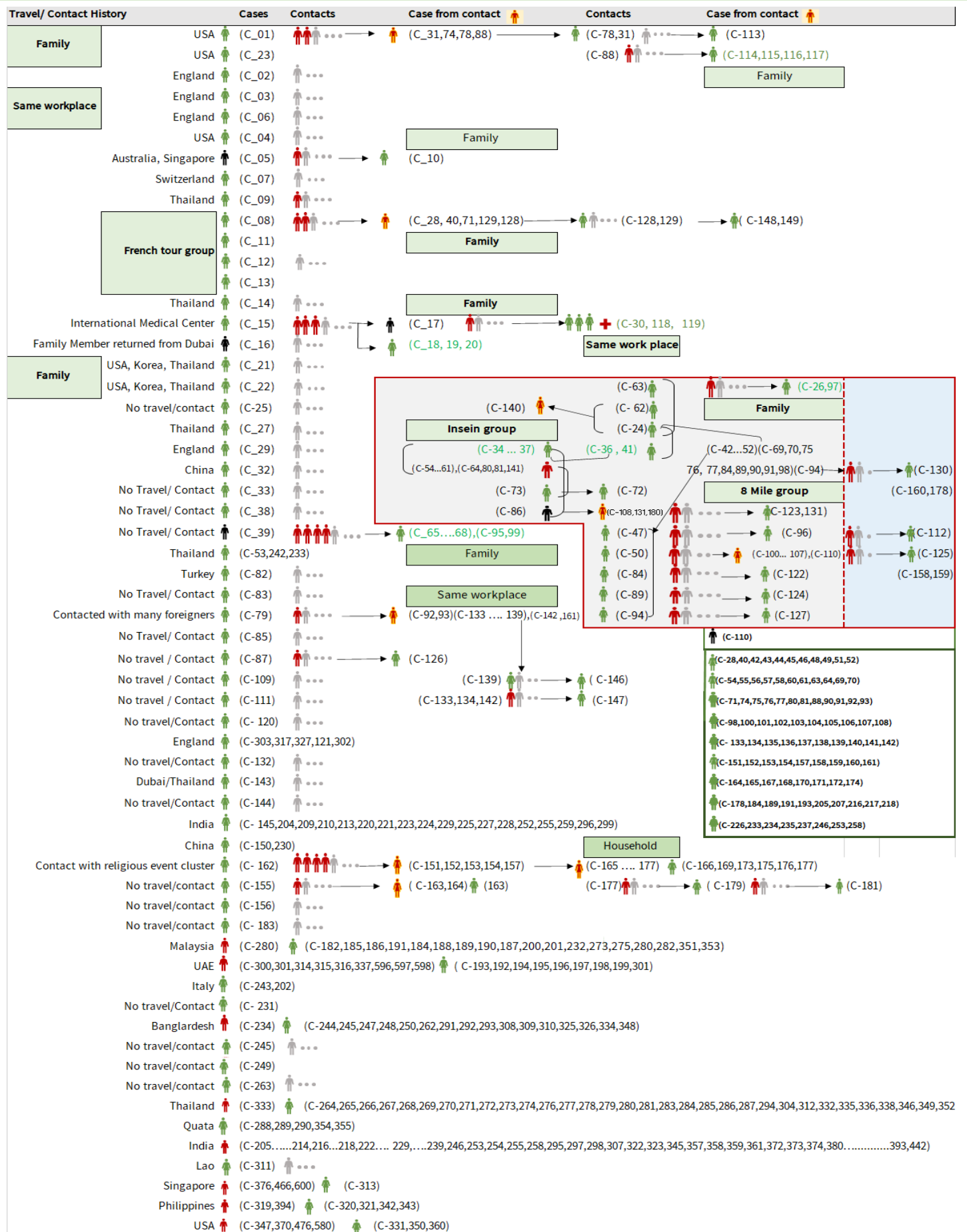
# Total laboratory confirmed cases by date (as of 27.8.2020), n= 628



# Cumulative Number of active confirmed cases, recovered and deaths (23.3.2020 – 27.8.2020), n (cumulative)=628



# Summary of COVID-19 confirmed cases (as of 27.8.2020), n (contacts)= 6,397



**Summary of COVID-19 confirmed cases (as of 27.8.2020), n (contacts)= 6,397**

| Travel/Contact    | Cases   | Contacts  | Case from contact | Contacts | Case from contact |
|-------------------|---|---|-------------------|----------|-------------------|
| No travel/contact | (C-339)   |   |                   |          |                   |
| Sudan             | (C-356)   |   |                   |          |                   |
| India             | (C-203,219,240,241,251,254,256,257,260,328,329,330,261,299,305,324,341,344) |   |                   |          |                   |
| Japan             | (C-362,363)   |   |                   |          |                   |
| No travel/Contact | (C-375)   |   |                   |          |                   |
| No travel/Contact | (C-377)   | (C-410,428,429)   |                   |          |                   |
| No travel/Contact | (C-378)   | (C-430)   |                   |          |                   |
| No travel/Contact | (C-379)   | (C-432,433,434,435,555)   |                   |          |                   |
| No travel/Contact | (C-396)   | (C-422,423,424,425,426,427)   |                   |          |                   |
| No travel/Contact | (C-397)   | (C-451,452,453)   |                   |          |                   |
| No travel/Contact | (C-399)   | (C-460,461,462,463,563)   |                   |          |                   |
| No travel/Contact | (C-408)   | (C-440,441)   |                   |          |                   |
| No travel/Contact | (C-410)   | (C-529,530,531,613)   |                   |          |                   |
| No travel/Contact | (C-411)   |   |                   |          |                   |
| No travel/Contact | (C-412)   |   |                   |          |                   |
| No travel/Contact | (C-413)   | (C-470,471,534)   |                   |          |                   |
| No travel/Contact | (C-414)   |   |                   |          |                   |
| No travel/Contact | (C-416)   | (C-607,608,609,610)   |                   |          |                   |
| No travel/Contact | (C-425)   | (C-556)   |                   |          |                   |
| No travel/Contact | (C-428)   | (C-528,535,536,537,538,539,540,541,542,543,544,545,546,547,548,549,550,551,552,553,619) |                   |          |                   |
| No travel/Contact | (C-433)   | (C-554)   |                   |          |                   |
| No travel/Contact | (C-434)   | (C-611,612)   |                   |          |                   |
| No travel/Contact | (C-435)   | (C-532,533)   |                   |          |                   |
| No travel/Contact | (C-436)   | (C-614,615)   |                   |          |                   |
| No travel/Contact | (C-437)   |   |                   |          |                   |
| No travel/Contact | (C-438)   | (C-616)   |                   |          |                   |
| No travel/Contact | (C-439)   |   |                   |          |                   |
| No travel/Contact | (C-445)   | (C-495)   |                   |          |                   |
| No travel/Contact | (C-447)   | (C-474)   |                   |          |                   |
| No travel/Contact | (C-448)   |   |                   |          |                   |
| No travel/Contact | (C-449)   |   |                   |          |                   |
| No travel/Contact | (C-450)   |   |                   |          |                   |
| No travel/Contact | (C-468)   | (C-585,586)   |                   |          |                   |
| No travel/Contact | (C-473)   |   |                   |          |                   |
| No travel/Contact | (C-477)   |   |                   |          |                   |
| No travel/Contact | (C-496)   |   |                   |          |                   |
| No travel/Contact | (C-497)   |   |                   |          |                   |
| No travel/Contact | (C-498)   |   |                   |          |                   |
| No travel/Contact | (C-499)   |   |                   |          |                   |
| No travel/Contact | (C-500)   |   |                   |          |                   |
| No travel/Contact | (C-501)   |   |                   |          |                   |
| No travel/Contact | (C-502)   |   |                   |          |                   |
| No travel/Contact | (C-503)   |   |                   |          |                   |
| No travel/Contact | (C-504)   |   |                   |          |                   |
| No travel/Contact | (C-505)   | (C-599)   |                   |          |                   |
| No travel/Contact | (C-506)   |   |                   |          |                   |
| No travel/Contact | (C-512)   |   |                   |          |                   |
| No travel/Contact | (C-519)   |   |                   |          |                   |
| No travel/Contact | (C-524)   |   |                   |          |                   |
| No travel/Contact | (C-525)   |   |                   |          |                   |
| No travel/Contact | (C-526)   |   |                   |          |                   |
| No travel/Contact | (C-557)   | (C-623,624,625)   |                   |          |                   |
| No travel/Contact | (C-558)   |   |                   |          |                   |
| No travel/Contact | (C-559)   |   |                   |          |                   |
| No travel/Contact | (C-559)   |   |                   |          |                   |
| No travel/Contact | (C-559)   |   |                   |          |                   |
| No travel/Contact | (C-559)   |   |                   |          |                   |
| No travel/Contact | (C-560)   | (C-626,627)   |                   |          |                   |
| No travel/Contact | (C-561)   |   |                   |          |                   |
| No travel/Contact | (C-395)   |   |                   |          |                   |
| No travel/Contact | (C-398,417)   |   |                   |          |                   |
| No travel/Contact | (C-415)   |   |                   |          |                   |
| No travel/Contact | (C-418,419)   |   |                   |          |                   |
| No travel/Contact | (C-420,421,431)   |   |                   |          |                   |
| No travel/Contact | (C-446,578)   |   |                   |          |                   |
| No travel/Contact | (C-454,455,456,457,458)   |   |                   |          |                   |
| No travel/Contact | (C-513,514)   |   |                   |          |                   |
| No travel/Contact | (C-515)   |   |                   |          |                   |
| No travel/Contact | (C-520,521,522,523,,576,583)  |   |                   |          |                   |
| No travel/Contact | (C-562)   |   |                   |          |                   |
| No travel/Contact | (C-564)   |   |                   |          |                   |
| No travel/Contact | (C-565)   |   |                   |          |                   |
| No travel/Contact | (C-566)   |   |                   |          |                   |
| No travel/Contact | (C-567)   |   |                   |          |                   |
| No travel/Contact | (C-568)   |   |                   |          |                   |
| No travel/Contact | (C-569)   |   |                   |          |                   |
| No travel/Contact | (C-570)   |   |                   |          |                   |
| No travel/Contact | (C-571)   |   |                   |          |                   |
| No travel/Contact | (C-572)   |   |                   |          |                   |
| No travel/Contact | (C-573)   |   |                   |          |                   |
| No travel/Contact | (C-574)   |   |                   |          |                   |
| No travel/Contact | (C-577)   |   |                   |          |                   |
| No travel/Contact | (C-579)   |   |                   |          |                   |
| No travel/Contact | (C-588)   |   |                   |          |                   |
| No travel/Contact | (C-589)   |   |                   |          |                   |
| No travel/Contact | (C-590)   |   |                   |          |                   |
| No travel/Contact | (C-595)   |   |                   |          |                   |
| No travel/Contact | (C-598)   |   |                   |          |                   |
| No travel/Contact | (C-603)   |   |                   |          |                   |



| Summary of current situation                   |                              |                         |
|--|------------------------------|-------------------------|
| Type   | New<br>(26.8.2020-27.8.2020) | Total<br>(on 27.8.2020) |
| Suspected and Person Under Investigation (PUI) | 67                           | 244                     |
| Hospital Quarantine                            | 18                           | 54                      |
| Facility Quarantine                            | 1,619                        | 20,974                  |

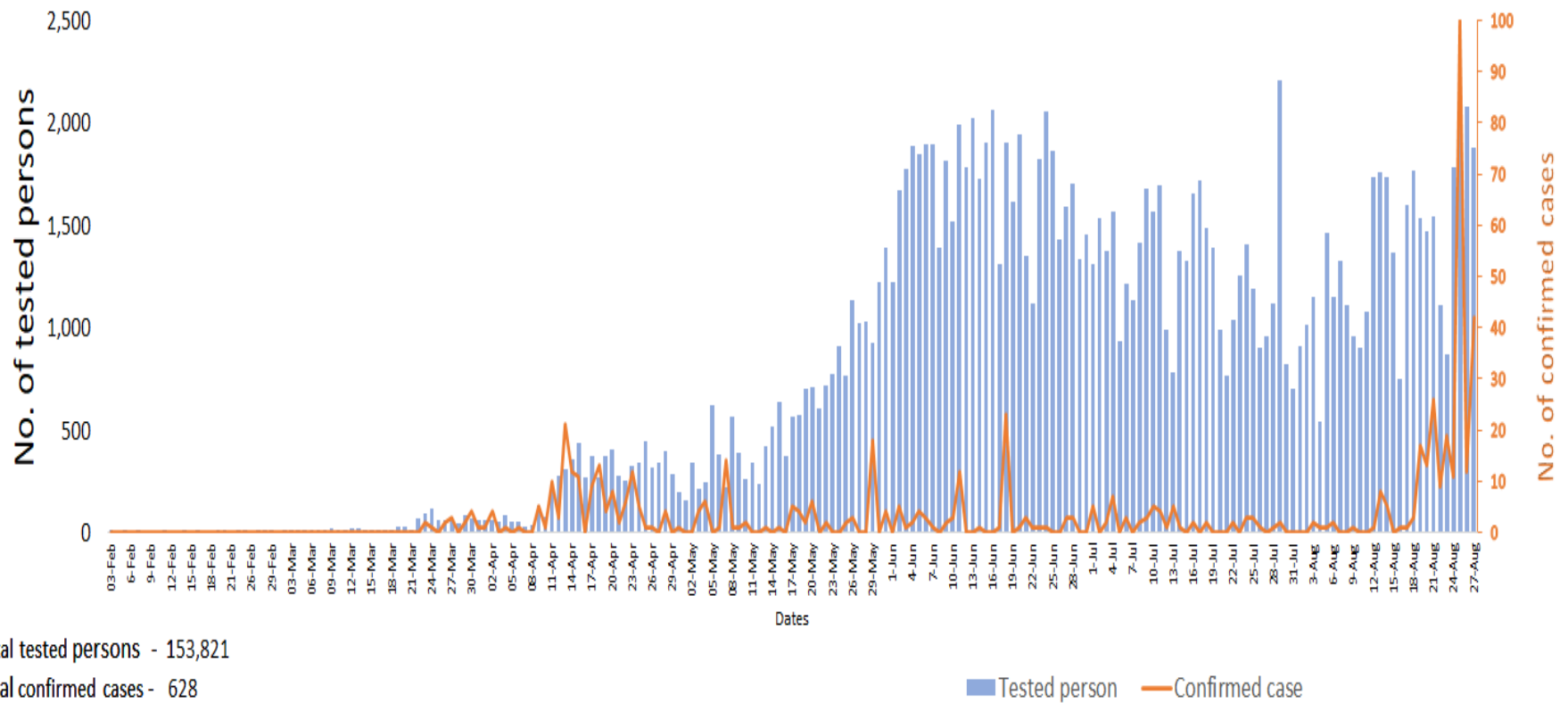
Person under Investigation (PUI) by State/Region hospitals (31.1.2020 – 27.8.2020) n= 7,456

| No.   | State/Region | PUI   |
|-------|--------------|-------|
| 1     | Yangon       | 3680  |
| 2     | Mandalay     | 1521  |
| 3     | Kayin        | 364   |
| 4     | Mon          | 304   |
| 5     | Shan (N)     | 263   |
| 6     | Magway       | 233   |
| 7     | Bago         | 184   |
| 8     | Shan (E)     | 132   |
| 9     | Shan (S)     | 106   |
| 10    | Ayeyarwaddy  | 105   |
| 11    | Rakhine      | 103   |
| 12    | Sagaing      | 92    |
| 13    | Thanintharyi | 83    |
| 14    | Kayah        | 81    |
| 15    | Naypyitaw    | 65    |
| 16    | Kachin       | 43    |
| 17    | Chin         | 31    |
| Total |              | 7,456 |

No. of Facility Quarantine sites and Quarantined people on 27.8.2020

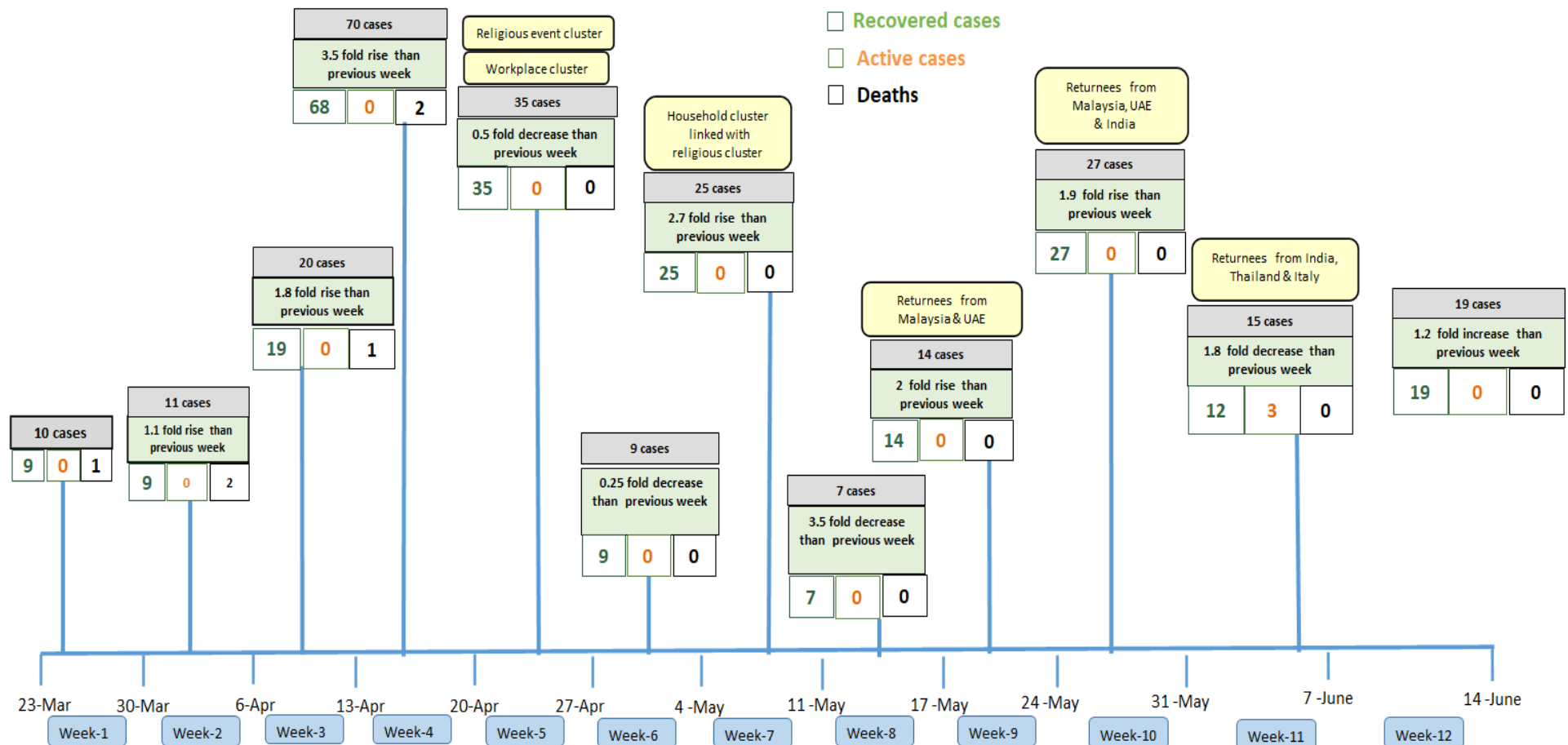
| No.   | State/Region | No. of facilities | Total no. of quarantine |
|-------|--------------|-------------------|-------------------------|
| 1     | Yangon       | 72                | 4654                    |
| 2     | Mon          | 269               | 2755                    |
| 3     | Bago         | 181               | 2405                    |
| 4     | Kayin        | 456               | 2209                    |
| 5     | Tanintharyi  | 189               | 1859                    |
| 6     | Rakhine      | 310               | 1671                    |
| 7     | Magway       | 48                | 1316                    |
| 8     | Mandalay     | 77                | 1023                    |
| 9     | Sagaing      | 168               | 932                     |
| 10    | Ayeyarwaddy  | 81                | 608                     |
| 11    | Kachin       | 90                | 518                     |
| 12    | Shan South   | 80                | 445                     |
| 13    | Naypyitaw    | 4                 | 317                     |
| 14    | Chin         | 19                | 110                     |
| 15    | Shan North   | 269               | 69                      |
| 16    | Kayah        | 18                | 68                      |
| 17    | Shan East    | 7                 | 15                      |
| Total |              | 2,338             | 20,974                  |

## COVID-19 confirmed cases among tested by date (as of 27.8.2020)



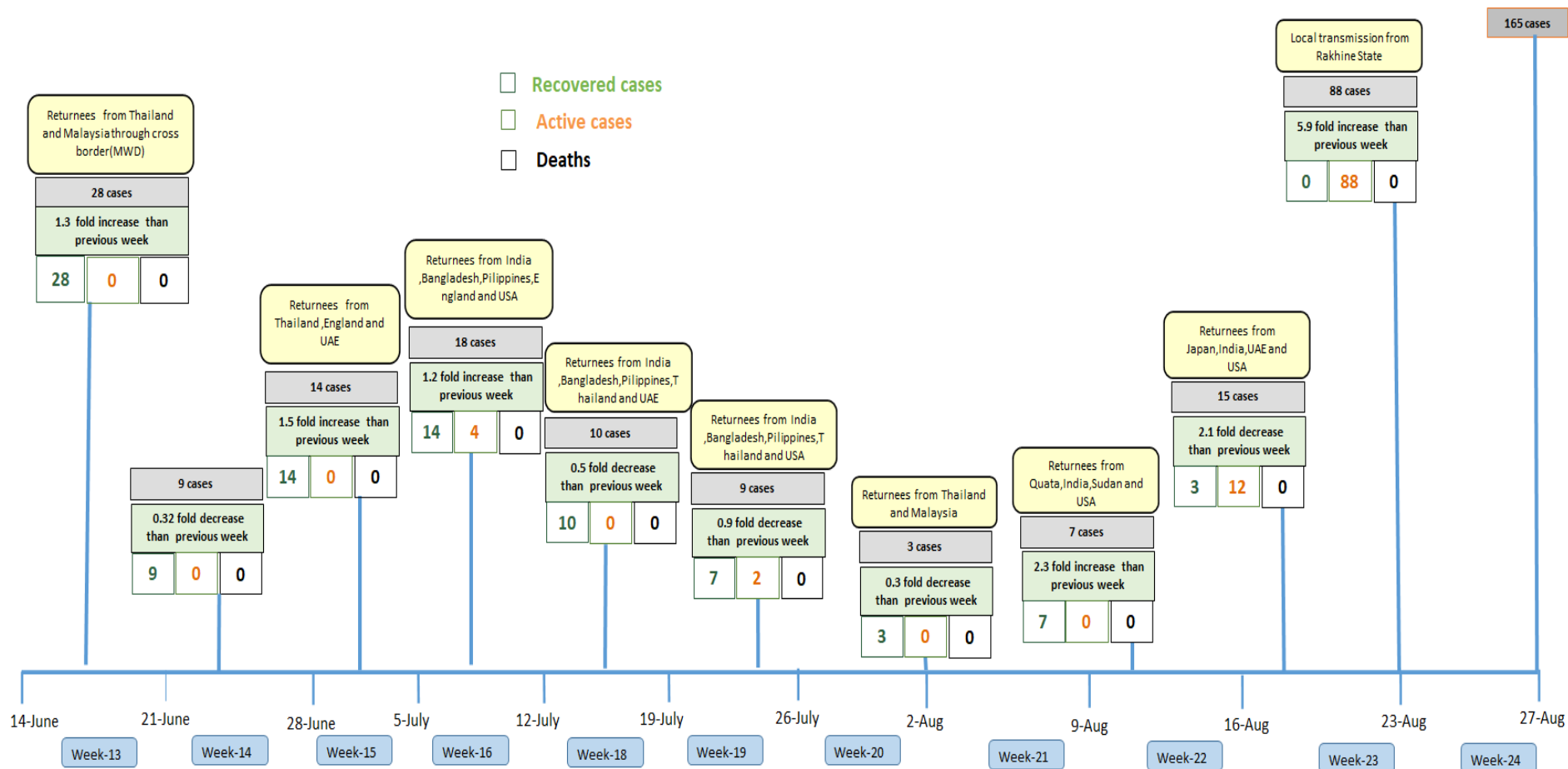


## Summary of new confirmed cases detection after first two cases (as of 27.8.2020)



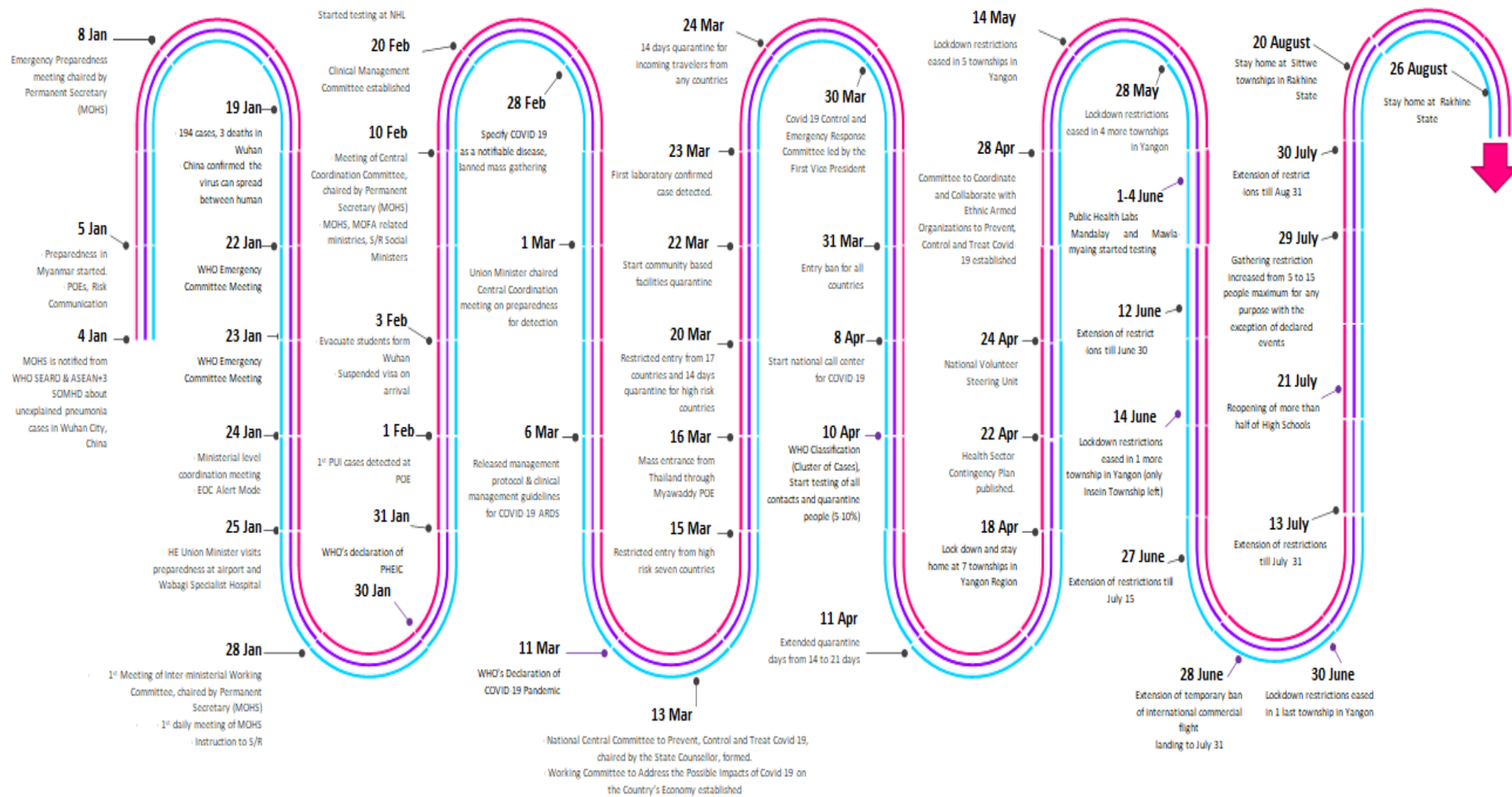
- Confirmed cases were detected as a peak in the 4th week after first confirmed cases due to the religious event cluster.
- Confirmed cases were decreased but still raised than the first 3 weeks due to the religious event cluster and workplace cluster.
- There were an increased in numbers of cases in the 7th week after the first two cases due to the household cluster linked with a religious cluster.
- Confirmed cases were detected by a nearly two-fold rise in the 9th and 10th weeks after the first two cases because of returnees coming back by relief flights.

## Summary of new confirmed cases detection after first two cases (as of 27.8.2020)



- Confirmed cases were detected as a peak in the 4th week after first confirmed cases due to the religious event cluster.
- Confirmed cases were decreased but still raised than the first 3 weeks due to the religious event cluster and workplace cluster.
- There were an increased in numbers of cases in the 7th week after the first two cases due to the household cluster linked with a religious cluster.
- Confirmed cases were detected by a nearly two-fold rise in the 9th and 10th weeks after the first two cases because of returnees coming back by relief flights.

# Timeline of Preparedness and Response to COVID-19 in Myanmar (as of 27.8.2020)



Hotline Number— 0673 420 268

Data source - CEU, DMS, NHL, PHL (MDY and MLM), DMR, DSGH, State and Region Health Departments