



Ministry of Health and Sports (Myanmar)

Department of Public Health

Central Epidemiology Unit

(26 June 2020)

Coronavirus Disease 2019 (COVID-19)

Situation Report - 80

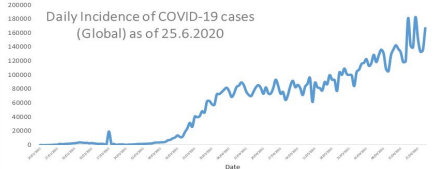
Data as reported by States and Regions by 11:00 PM MST 25 June 2020

Global Situation
(WHO situation report - 157)
data as of 14:30 MST 25 June 2020

Confirmed cases
9,296,202

Deaths
479,133

Case Fatality Rate
5.1 %



Myanmar Situation

Total tested
70,266

Confirmed cases
293

Negative
69,973

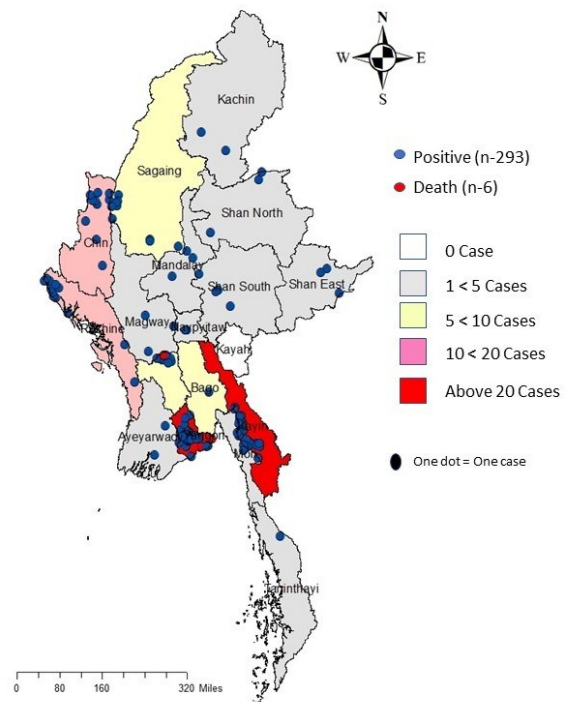
Recovered
215
73.3 % of confirmed cases

Active
72
24.5% of confirmed cases

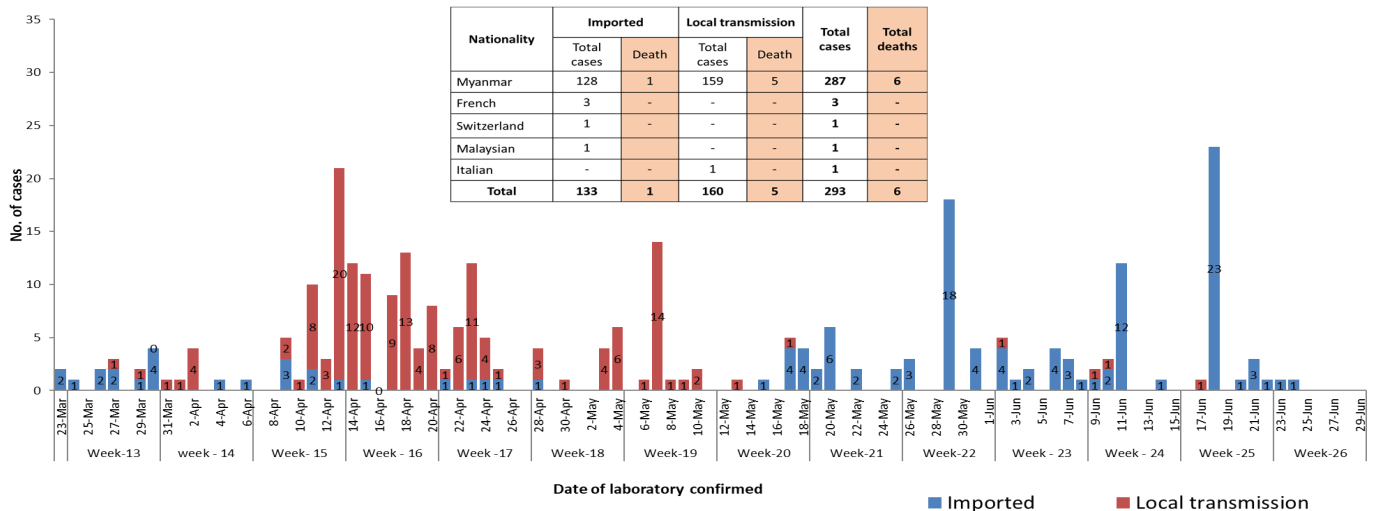
Death
6
2.0% of confirmed cases

| No. | State/Region | COVID -19 Confirmed | Recovered | Deaths |
|--------------|--------------|---------------------|--------------------|----------|
| 1 | Yangon | 204 | 166 (3 New) | 5 |
| 2 | Kayin | 25 | 2 | - |
| 3 | Rakhine | 12 | 3 (1 New) | - |
| 4 | Chin | 10 | 6 | - |
| 5 | Sagaing | 9 | 8 | - |
| 6 | Bago | 8 | 7 | 1 |
| 7 | Shan(South) | 4 | 3 | - |
| 8 | Mandalay | 3 | 3 | - |
| 9 | Shan(East) | 3 | 4 | - |
| 10 | Shan(North) | 3 | 2 | - |
| 11 | Magway | 3 | 3 | - |
| 12 | Naypyitaw | 2 | 2 | - |
| 13 | Ayeyarwaddy | 2 | 2 | - |
| 14 | Kachin | 2 | 1 | - |
| 15 | Mon | 2 | 1 | - |
| 16 | Thantharyi | 1 | 1 | - |
| 17 | Kayah | - | - | - |
| Total | | 293 | 215 (4 New) | 6 |

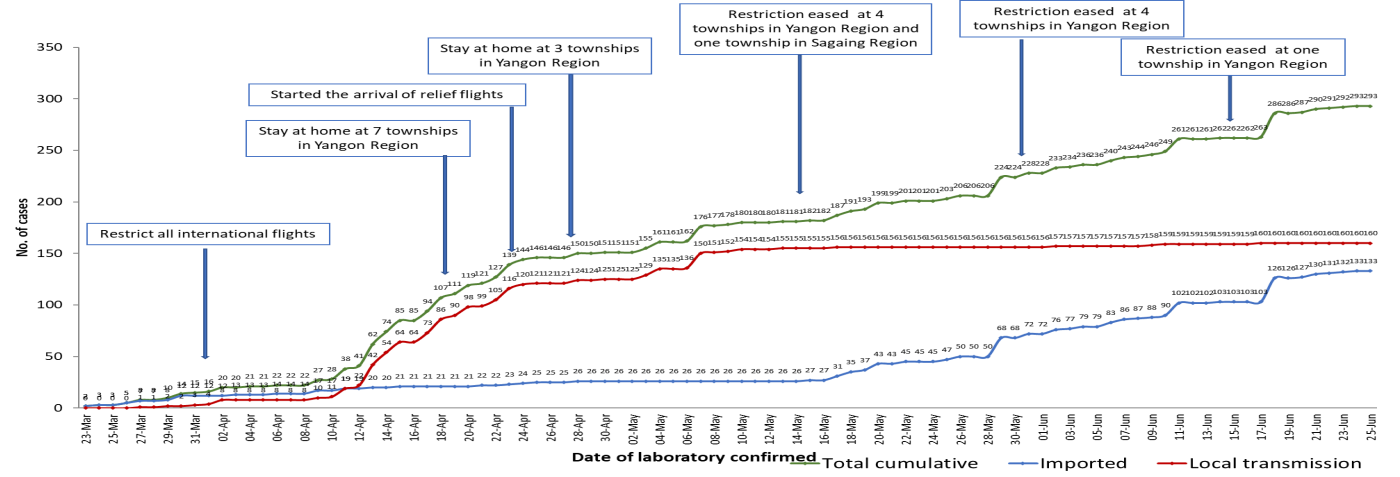
Map showing COVID-19 laboratory confirmed cases



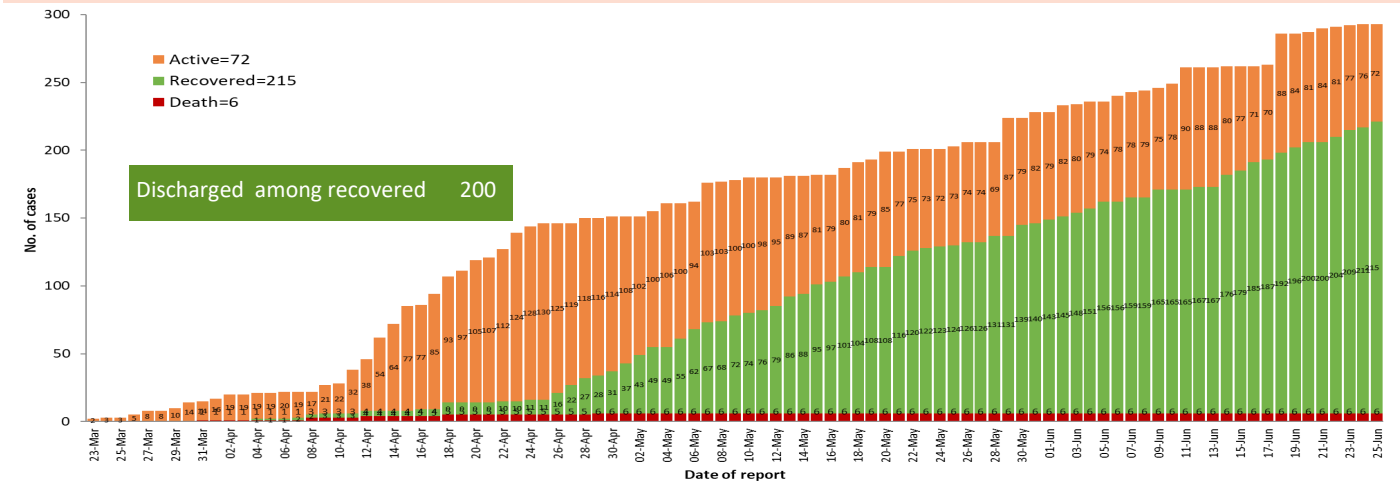
COVID-19 confirmed cases by types of transmissions (as of 25.6.2020, 11:00 pm) n=293



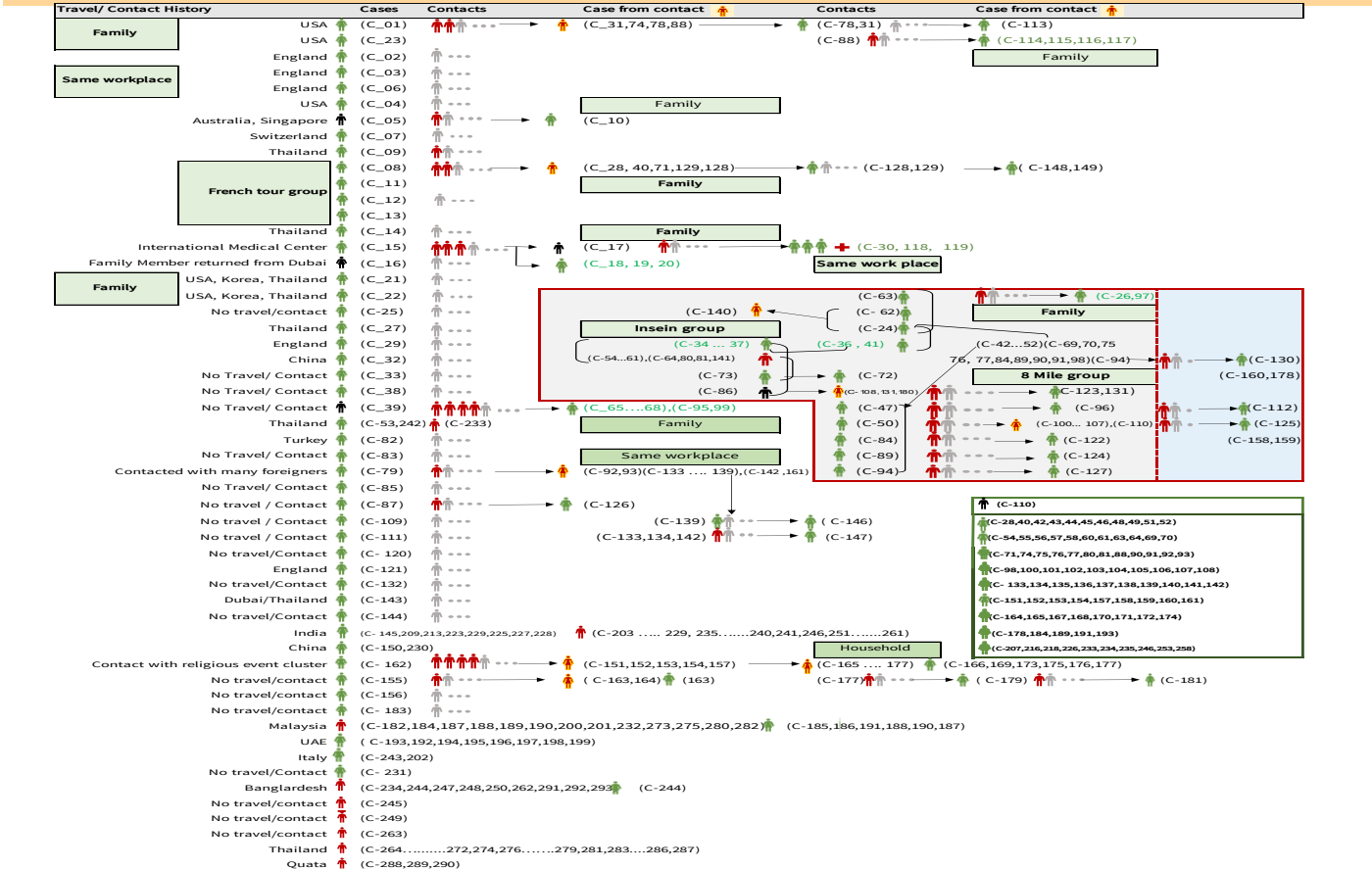
Total laboratory confirmed cases by date (as of 25.6.2020, 11:00 pm), n= 293



Cumulative Number of active confirmed cases, recovered and deaths (23.3.2020 – 25.6.2020), n (cumulative)=293



Summary of COVID-19 confirmed cases (as of 25.6.2020) ,n (contacts)= 5,540



Summary of current situation

| Type | New (24.6.2020-25.6.2020) | Total (on 25.6.2020) |
|--|------------------------------|-------------------------|
| Suspected and Person Under Investigation (PUI) | 24 | 199 |
| Hospital Quarantine | 2 | 75 |
| Facility Quarantine | 1,174 | 33,092 |

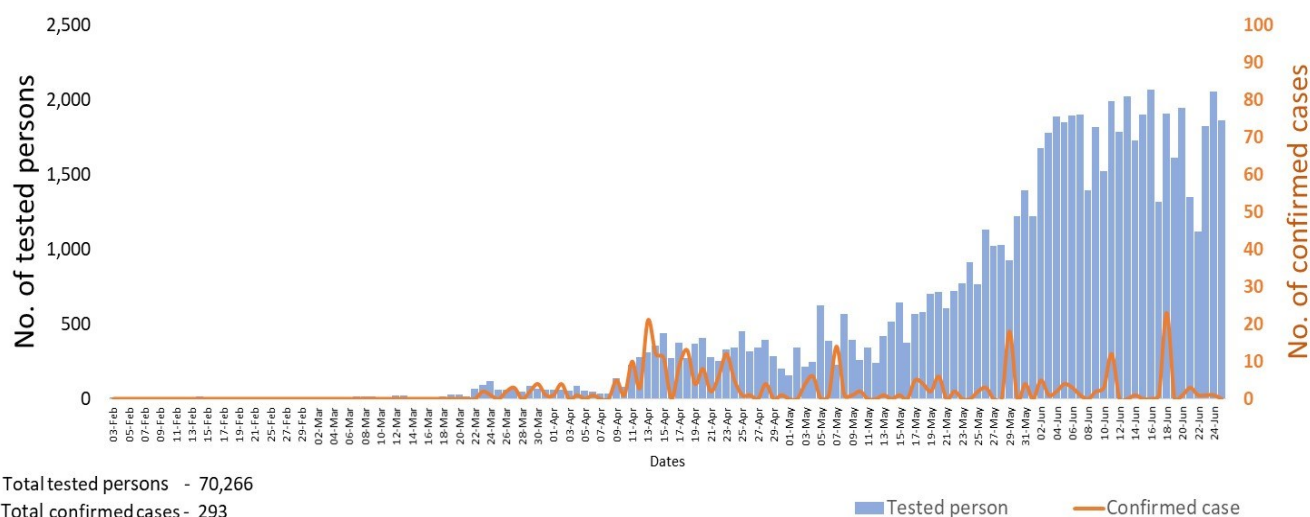
Person under Investigation (PUI) by State/Region hospitals (31.1.2020 – 25.6.2020) n= 5,848

| No. | State/Region | PUI |
|--------------|--------------|--------------|
| 1. | Yangon | 2,998 |
| 2. | Mandalay | 1,116 |
| 3. | Kayin | 226 |
| 4. | Mon | 216 |
| 5. | Shan(N) | 200 |
| 6. | Magway | 197 |
| 7. | Bago | 179 |
| 8. | Shan(E) | 115 |
| 9. | Ayeyarwaddy | 102 |
| 10. | Shan(S) | 96 |
| 11. | Sagaing | 84 |
| 12. | Kayah | 76 |
| 13. | Rakhine | 66 |
| 14. | Naypyitaw | 63 |
| 15. | Thanintharyi | 58 |
| 16. | Kachin | 34 |
| 17. | Chin | 22 |
| Total | | 5,848 |

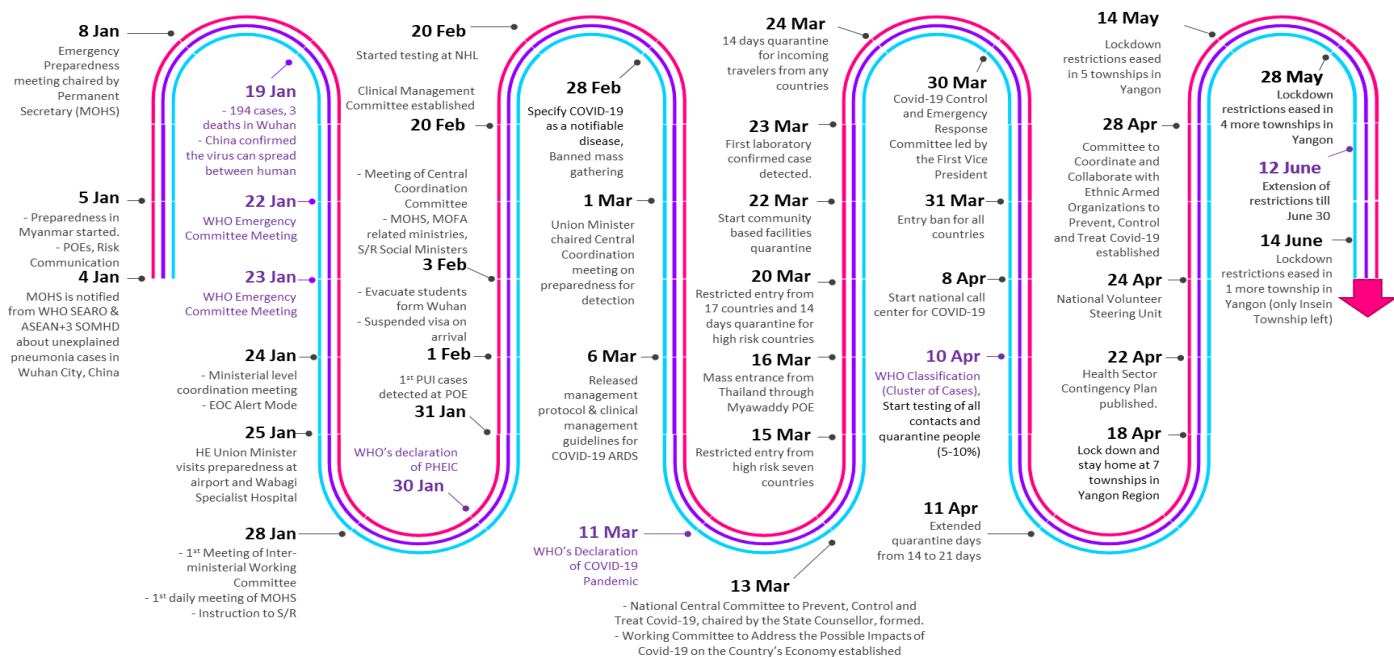
No. of Facility Quarantine sites and Quarantined people on 25.6.2020

| No. | State/Region | No. of facilities | Total no. of quarantine |
|--------------|--------------|-------------------|-------------------------|
| 1. | Magway | 2,619 | 4,654 |
| 2. | Bago | 371 | 4,416 |
| 3. | Kayin | 896 | 3,752 |
| 4. | Mon | 309 | 3,392 |
| 5. | Yangon | 83 | 3,390 |
| 6. | Kachin | 412 | 2,655 |
| 7. | Sagaing | 969 | 1,875 |
| 8. | Mandalay | 128 | 1,840 |
| 9. | Rakhine | 404 | 1,668 |
| 10. | Shan South | 162 | 1,428 |
| 11. | Tanintharyi | 189 | 1,371 |
| 12. | Ayeyarwaddy | 197 | 1,148 |
| 13. | Naypyitaw | 19 | 589 |
| 14. | Shan North | 239 | 338 |
| 15. | Chin | 27 | 218 |
| 16. | Shan East | 11 | 217 |
| 17. | Kayah | 18 | 141 |
| Total | | 7,053 | 33,092 |

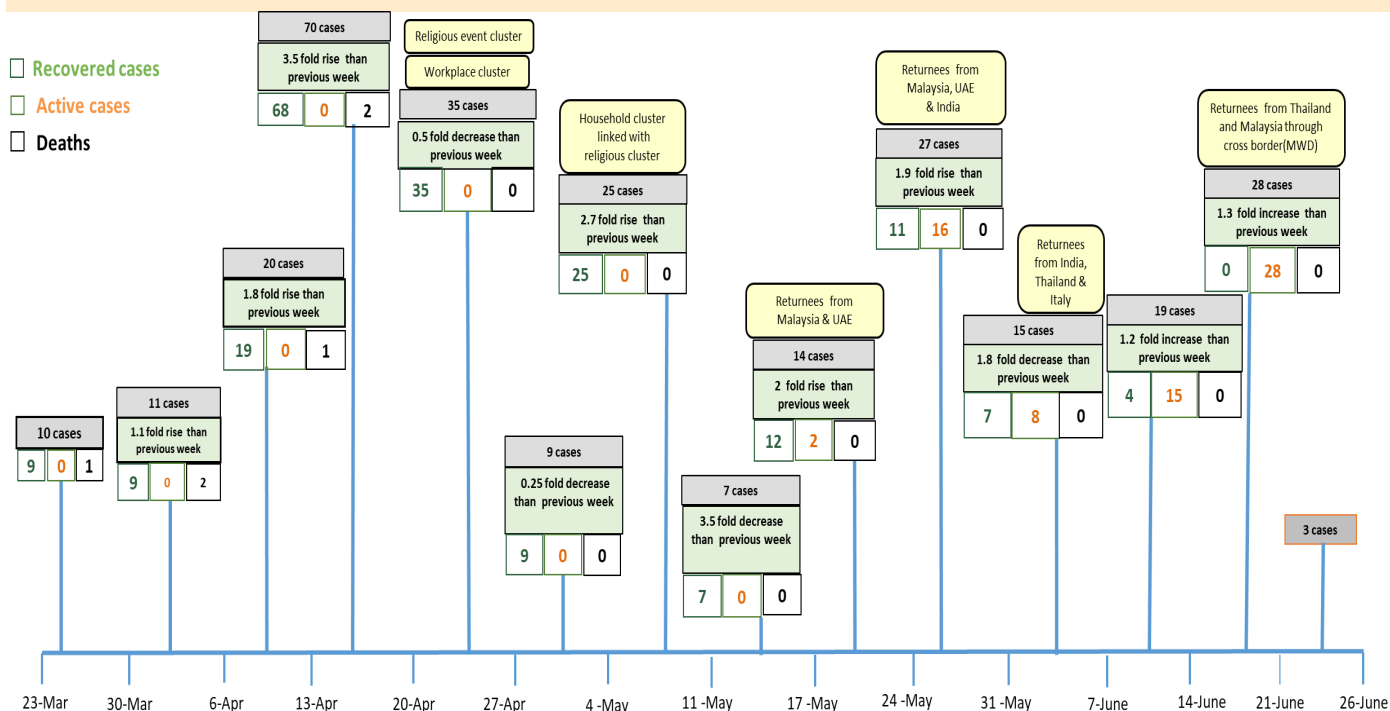
COVID-19 confirmed cases among tested by date (as of 25.6.2020)



Timeline of Preparedness and Response to COVID-19 in Myanmar (as of 25.6.2020)



Summary of new confirmed cases detection after first two cases (as of 25.6.2020)



- Confirmed cases were detected as a peak in the 4th week after first confirmed cases due to the religious event cluster.
- Confirmed cases were decreased but still raised than the first 3 weeks due to the religious event cluster and workplace cluster.
- There were an increased in numbers of cases in the 7th week after the first two cases due to the household cluster linked with a religious cluster.
- Confirmed cases were detected by a nearly two-fold rise in the 9th and 10th weeks after the first two cases because of returnees coming back by relief flights.