



Ministry of Health and Sports (Myanmar)

Department of Public Health

Central Epidemiology Unit

(7 June 2020)

Coronavirus Disease 2019 (COVID-19)

Situation Report - 61

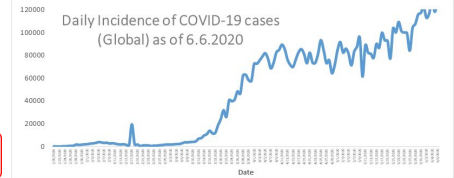
Data as reported by States and Regions by 11:00PM MST 6 June 2020

Global Situation
(WHO situation report - 138)
data as of 14:30 MST 6 June 2020

Confirmed cases
6,663,304

Deaths
392,802

Case Fatality Rate
5.8 %



Myanmar Situation

Total tested
37,319

Confirmed cases
240

Negative
37,079

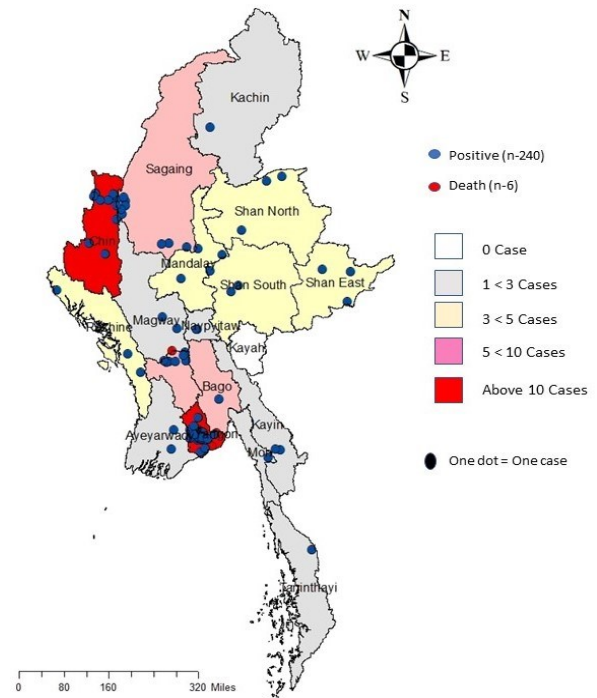
Recovered
156
65 % of confirmed cases

Active
78
32.5 % of confirmed cases

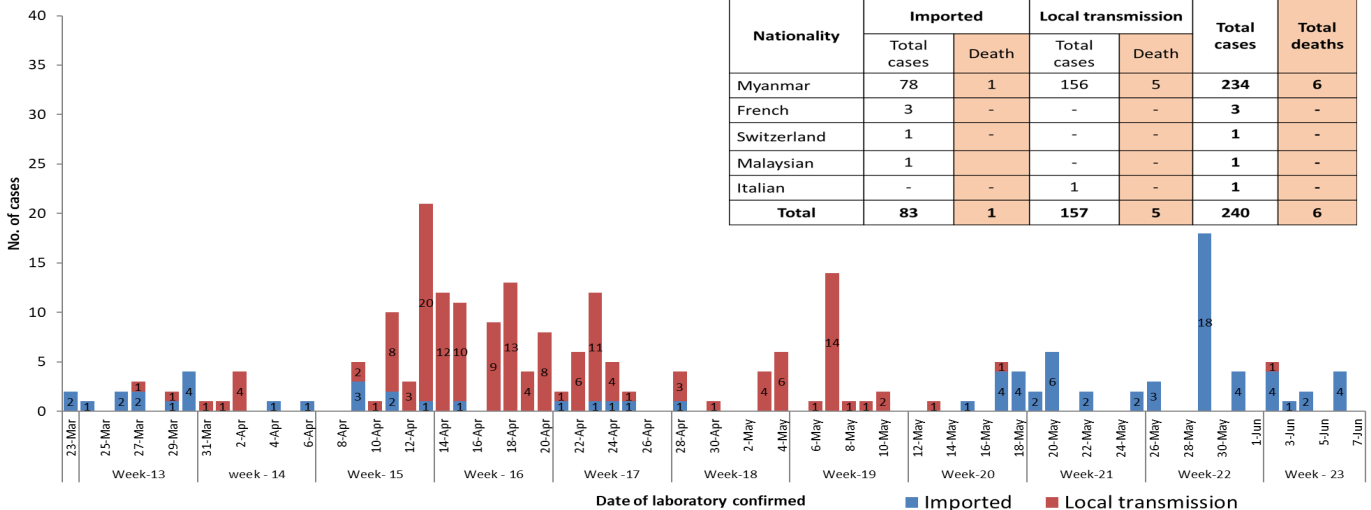
Death
6
2.5 % of confirmed cases

No.	State/Region	COVID -19 Confirmed case	Recovered	Deaths
1.	Yangon	187 (4 New)	121	5
2.	Chin	10	3	-
3.	Sagaing	9	7	-
4.	Bago	8	6	1
5.	Shan(East)	3	3	-
6.	Mandalay	3	3	-
7.	Shan(South)	3	2	-
8.	Shan(North)	3	2	-
9.	Rakhine	3	-	-
10.	Naypyitaw	2	2	-
11.	Kayin	2	1	-
12.	Magway	2	2	-
13.	Ayeyarwaddy	2	1	-
14.	Mon	1	1	-
15.	Kachin	1	1	-
16.	Thanintharyi	1	1	-
17.	Kayah	-	-	-
Total		240 (4 new)	156	6

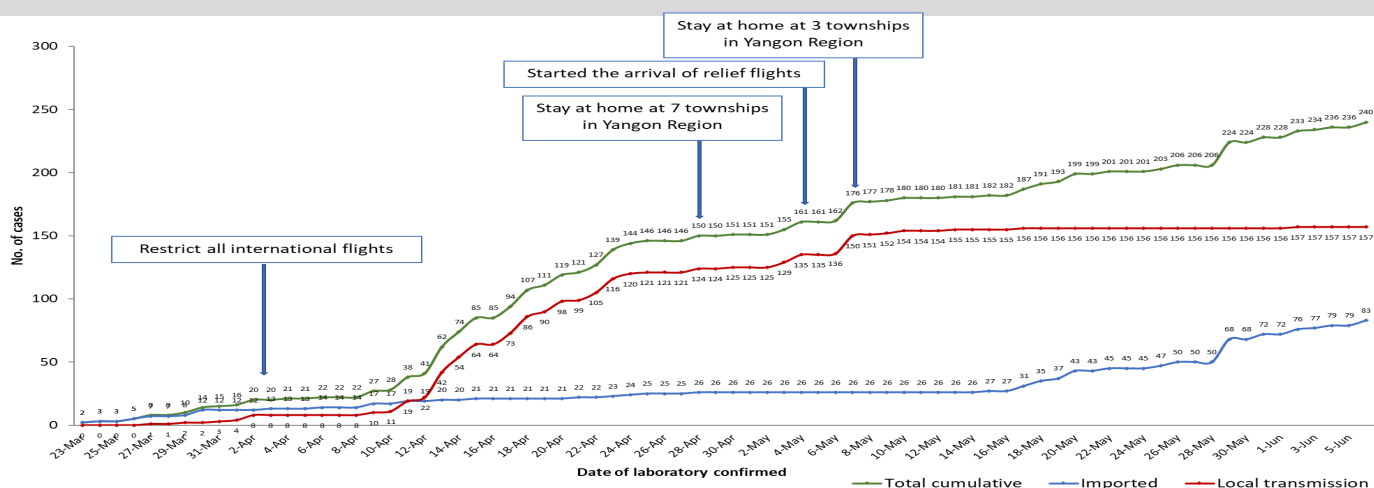
Map showing COVID-19 laboratory confirmed cases



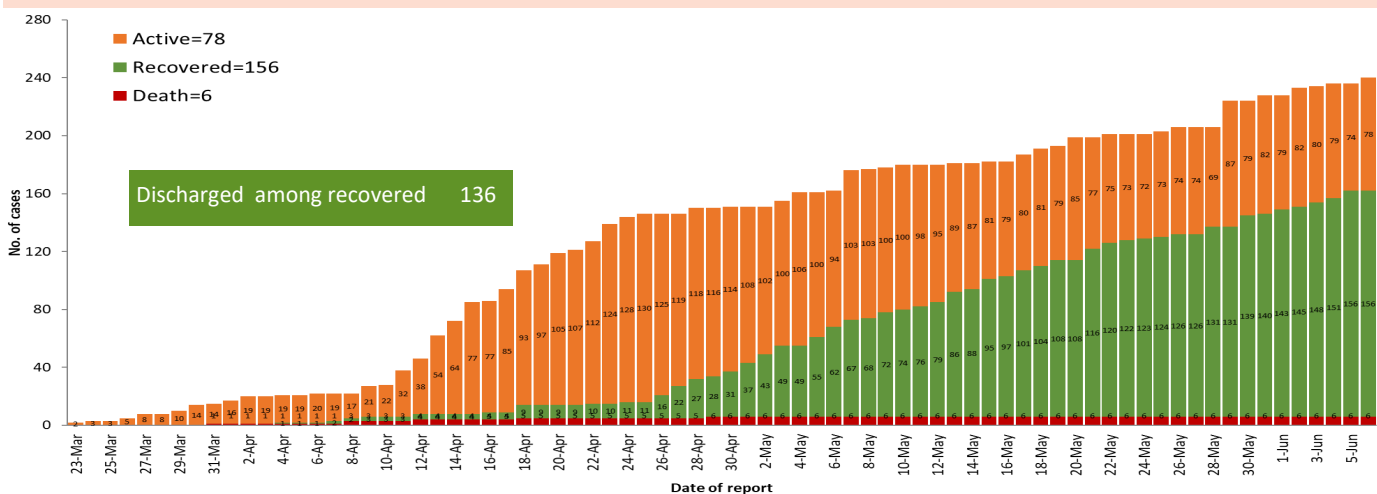
COVID-19 confirmed cases by types of transmissions (as of 6-6-2020,11:00 pm) n=240



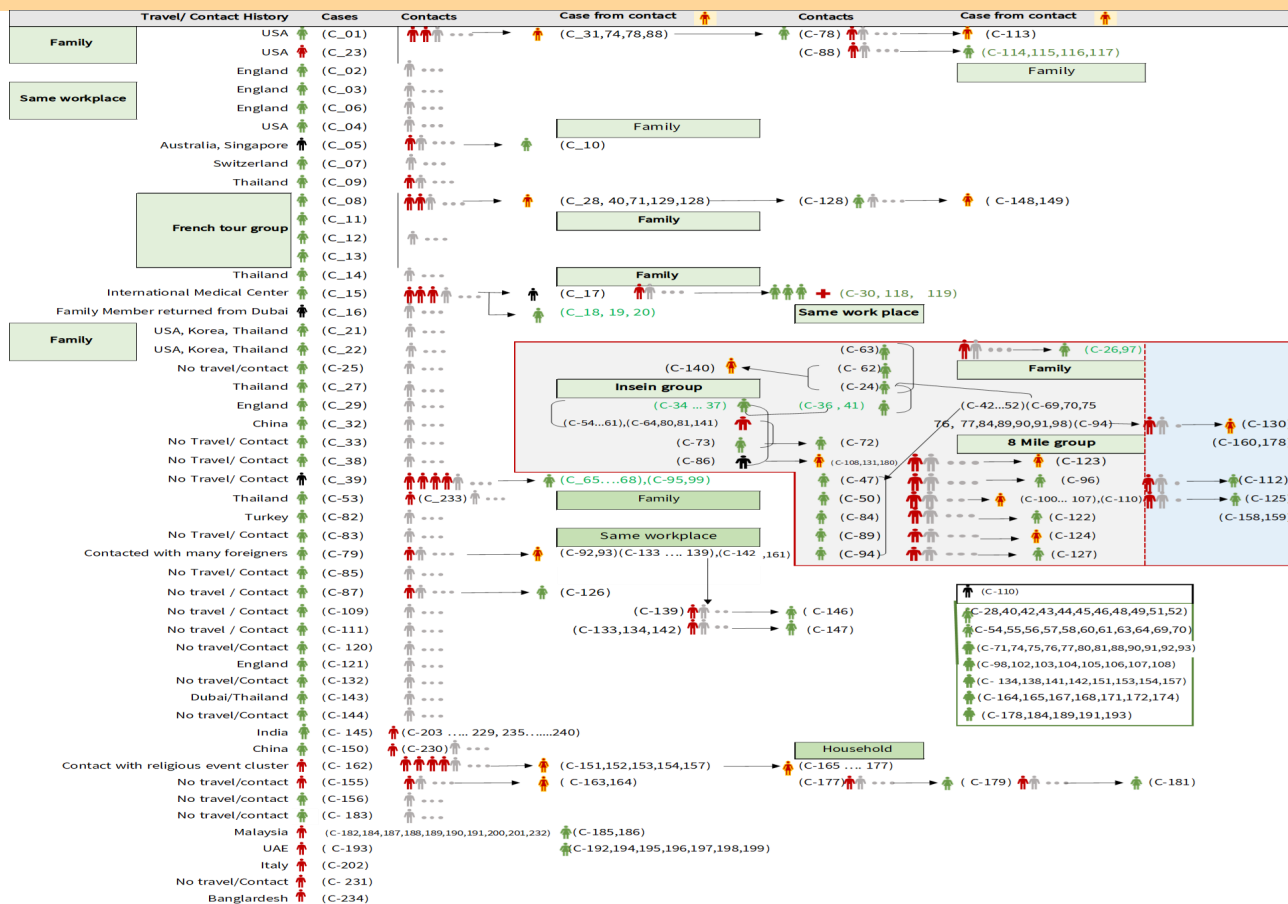
Total laboratory confirmed cases by date (as of 6.6.2020, 11:00 pm), n= 240



Cumulative Number of active confirmed cases, recovered and deaths (23.3.2020 – 6-6-2020), n (cumulative)=240



Summary of COVID-19 confirmed cases (as of 6-6-2020) ,n (contacts)= 4,943

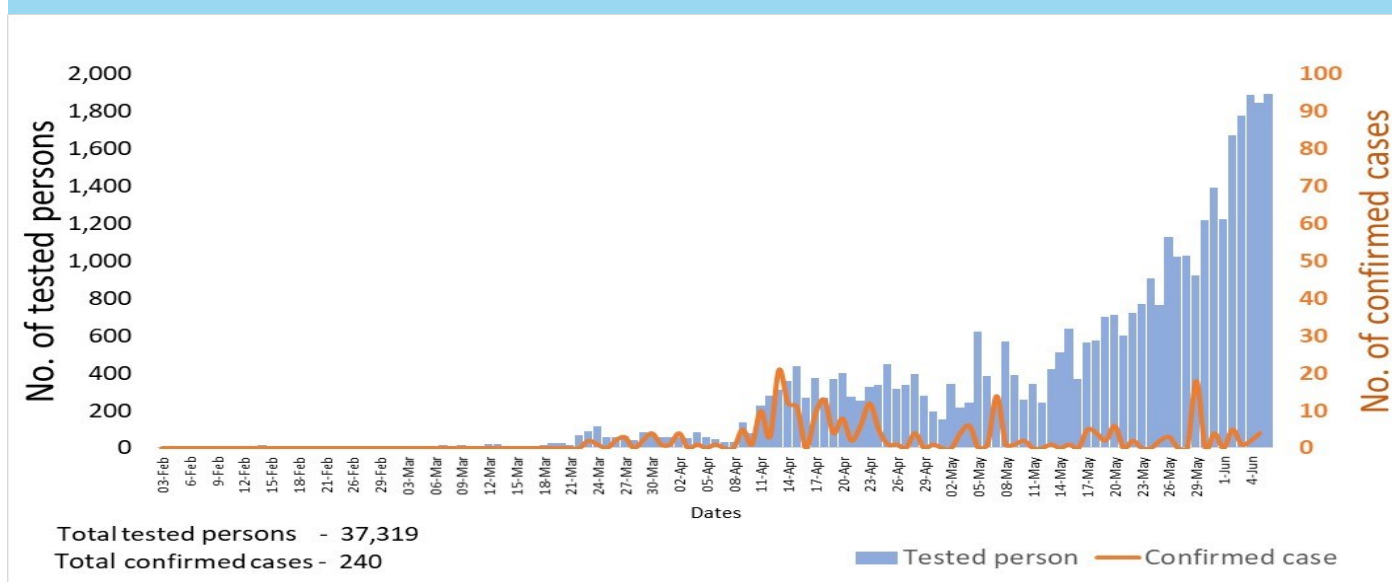


Summary of current situation

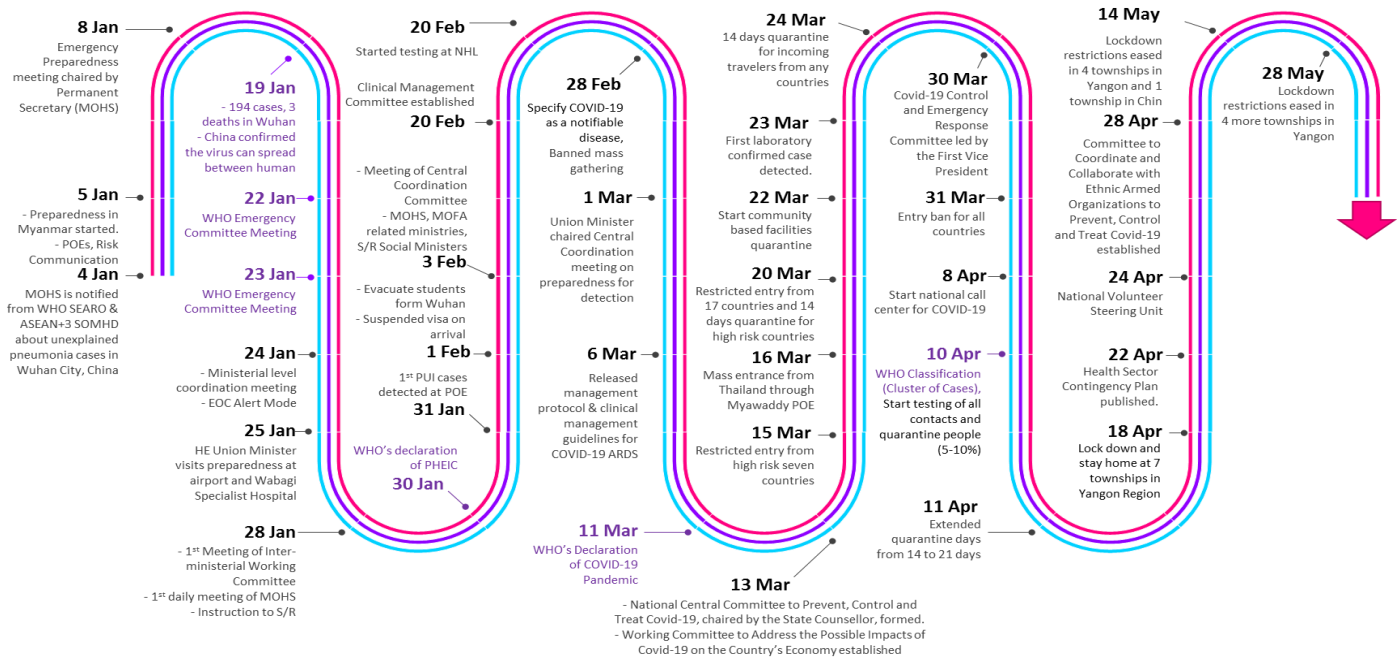
Type	New (5.6.2020-6.6.2020)	Total (on 6.6.2020)
Suspected and Person Under Investigation (PUI)	30	268
Hospital Quarantine	13	117
Facility Quarantine	1,781	48,064

Person under Investigation (PUI) by State/Region hospitals (31.1.2020 – 6.6.2020) n= 5,290			No. of Facility Quarantine sites and Quarantined people on 6.6.2020			
No.	State/Region	PUI	No.	State/Region	No. of facilities	Total no. of quaran-tine
1.	Yangon	2,743	1.	Magway	2,866	9,968
2.	Mandalay	959	2.	Bago	531	5,947
3.	Mon	197	3.	Kachin	714	4,932
4.	Shan(N)	189	4.	Sagaing	1,856	3,708
5.	Kayin	183	5.	Mandalay	486	3,396
6.	Magway	175	6.	Kayin	592	3,166
7.	Bago	174	7.	Rakhine	650	3,156
8.	Shan (E)	107	8.	Yangon	84	2,626
9	Ayeyarwaddy	96	9	Ayeyarwaddy	739	2,565
10.	Shan(S)	92	10.	Mon	118	2,425
11.	Sagaing	79	11.	Shan North	421	1,797
12.	Kayah	74	12.	Shan S	131	1,456
13.	Rakhine	61	13.	Naypyitaw	19	1,256
14.	Naypyitaw	60	14.	Tanintharyi	189	940
15.	Thanintharyi	52	15.	Chin	42	260
16.	Kachin	28	16.	Shan East	11	239
17.	Chin	21	17.	Kayah	18	227
Total		5,290	Total		9,467	48,064

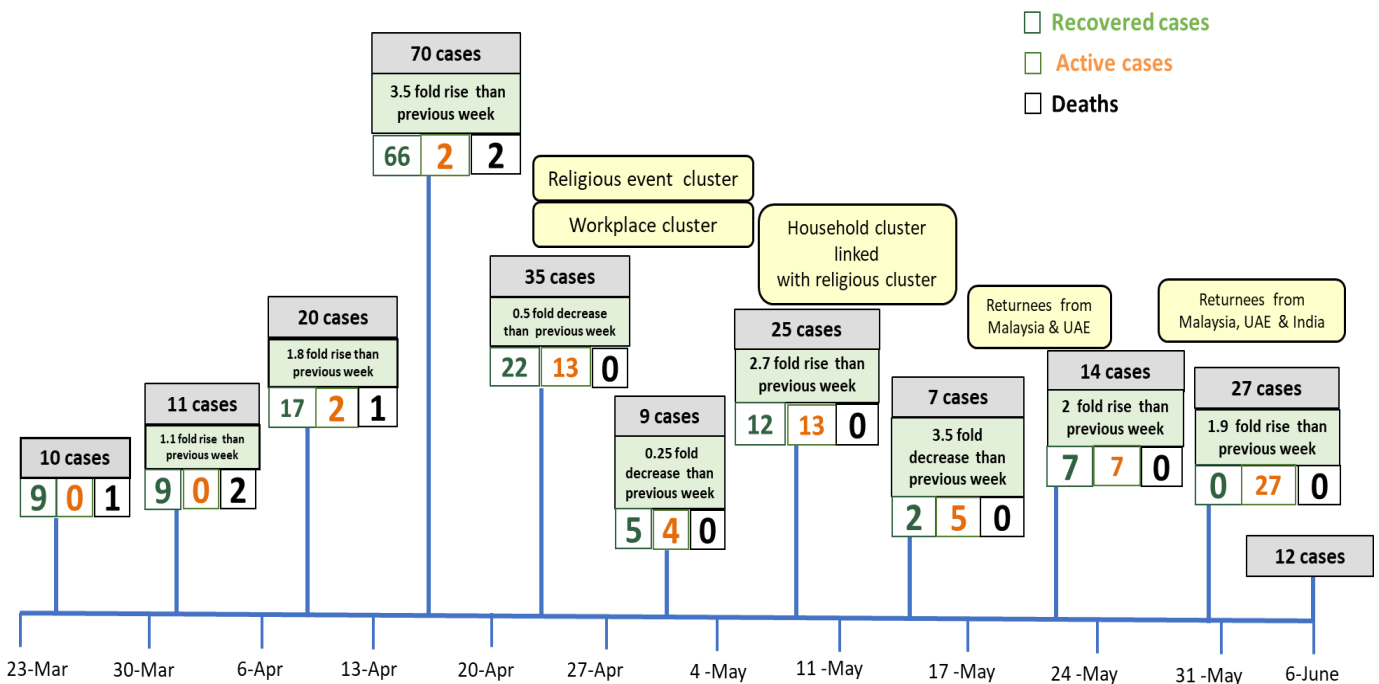
COVID-19 confirmed cases among tested by date (as of 6.6.2020)



Timeline of Preparedness and Response to COVID-19 in Myanmar (as of 6.6.2020)



Summary of new confirmed cases detection after first two cases (as of 6.6.2020)



- Confirmed cases were detected as peak in the 4th week after first confirmed cases due to religious event cluster.
- Confirmed cases were decreased but still raised than the first 3 weeks due to religious event cluster and workplace cluster.
- There were an increased in numbers of cases in the 7th week after the first two cases due to household cluster linked with religious cluster.
- Confirmed cases were detected by nearly two fold rise in the 9th and 10th weeks after first two cases because of returnees coming back by relief flights.