



Ministry of Health and Sports (Myanmar)

Department of Public Health

Central Epidemiology Unit

(9 June 2020)

Coronavirus Disease 2019 (COVID-19)

Situation Report - 63

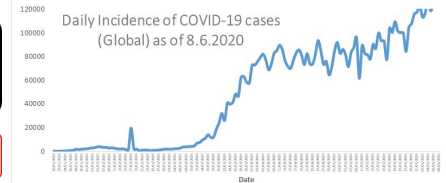
Data as reported by States and Regions by 1:00AM MST 9 June 2020

Global Situation
(WHO situation report - 140)
data as of 14:30 MST 8 June 2020

Confirmed cases
6,931,000

Deaths
400,857

Case Fatality Rate
5.7 %



Myanmar Situation

Total tested
40,600

Confirmed cases
244

Negative
40,356

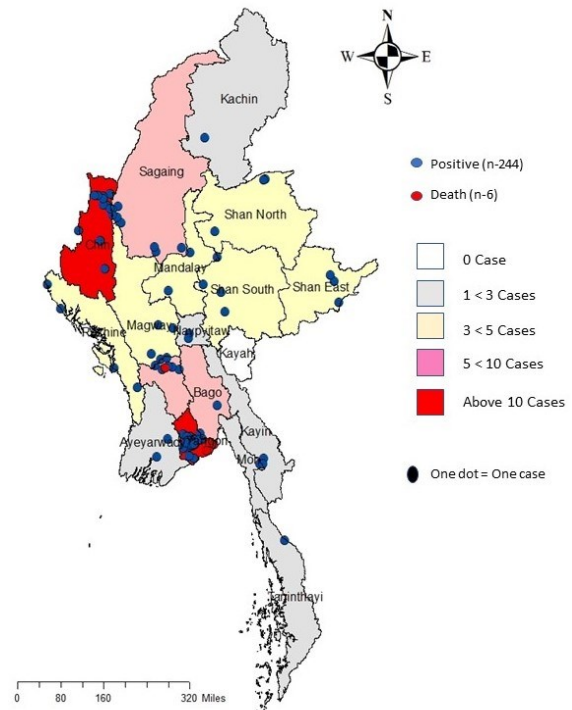
Recovered
159
65.4 % of confirmed cases

Active
79
32.0% of confirmed cases

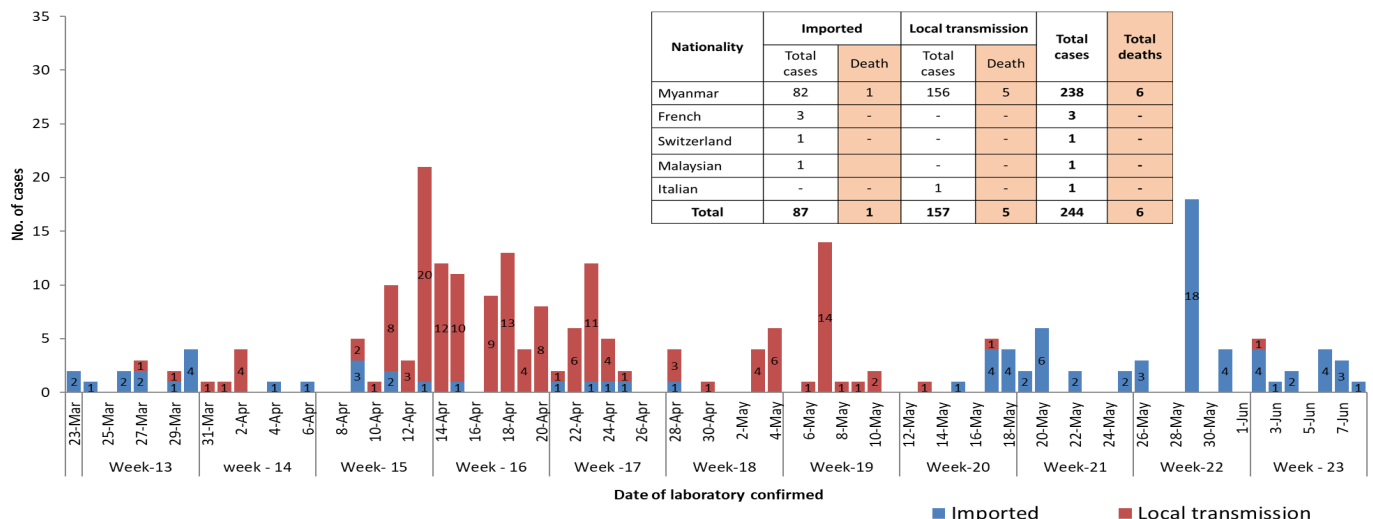
Death
6
2.4% of confirmed cases

No.	State/Region	COVID -19 Confirmed case	Recovered	Deaths
1.	Yangon	189	124	5
2.	Chin	10	3	-
3.	Sagaing	9	7	-
4.	Bago	8	6	1
5.	Rakhine	4 (1 New)	-	-
6.	Shan (East)	3	3	-
7.	Mandalay	3	3	-
8.	Shan(South)	3	2	-
9.	Shan(North)	3	2	-
10.	Magway	3	2	-
11.	Naypyitaw	2	2	-
12.	Kayin	2	1	-
13.	Ayeyarwaddy	2	1	-
14.	Mon	1	1	-
15.	Kachin	1	1	-
16.	Thanintharyi	1	1	-
17.	Kayah	-	-	-
Total		244 (1 new)	159	6

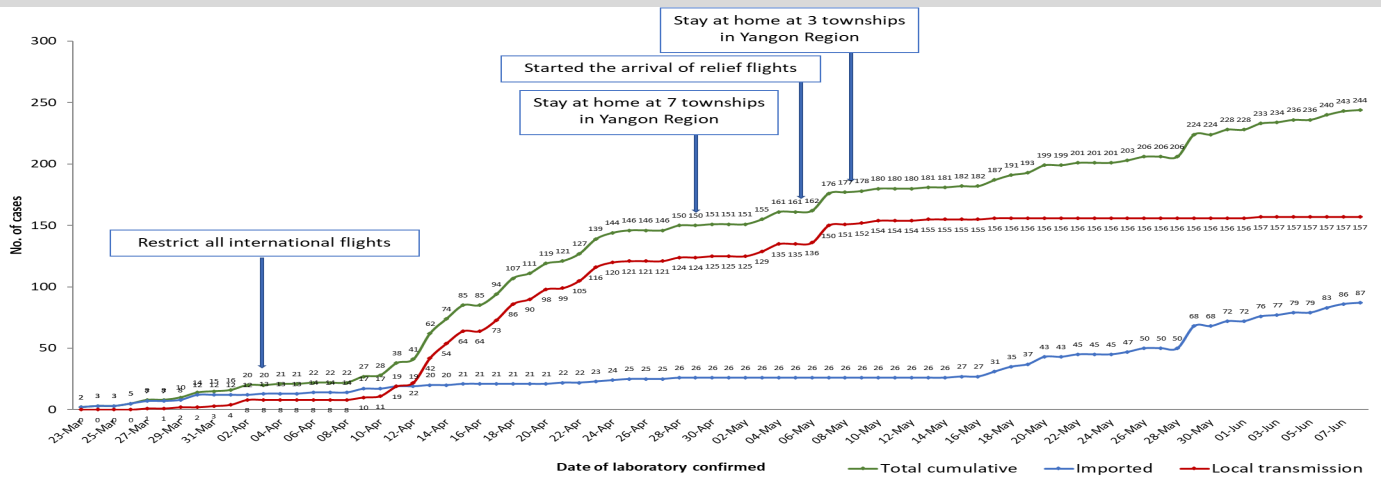
Map showing COVID-19 laboratory confirmed cases



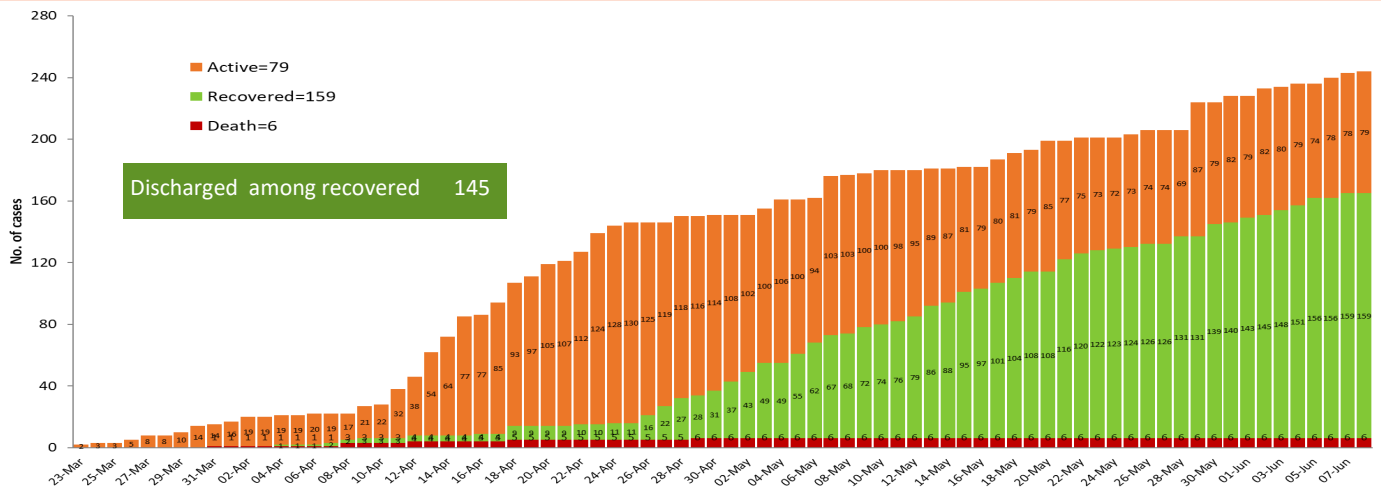
COVID-19 confirmed cases by types of transmissions (as of 9-6-2020,1:00 am) n=244



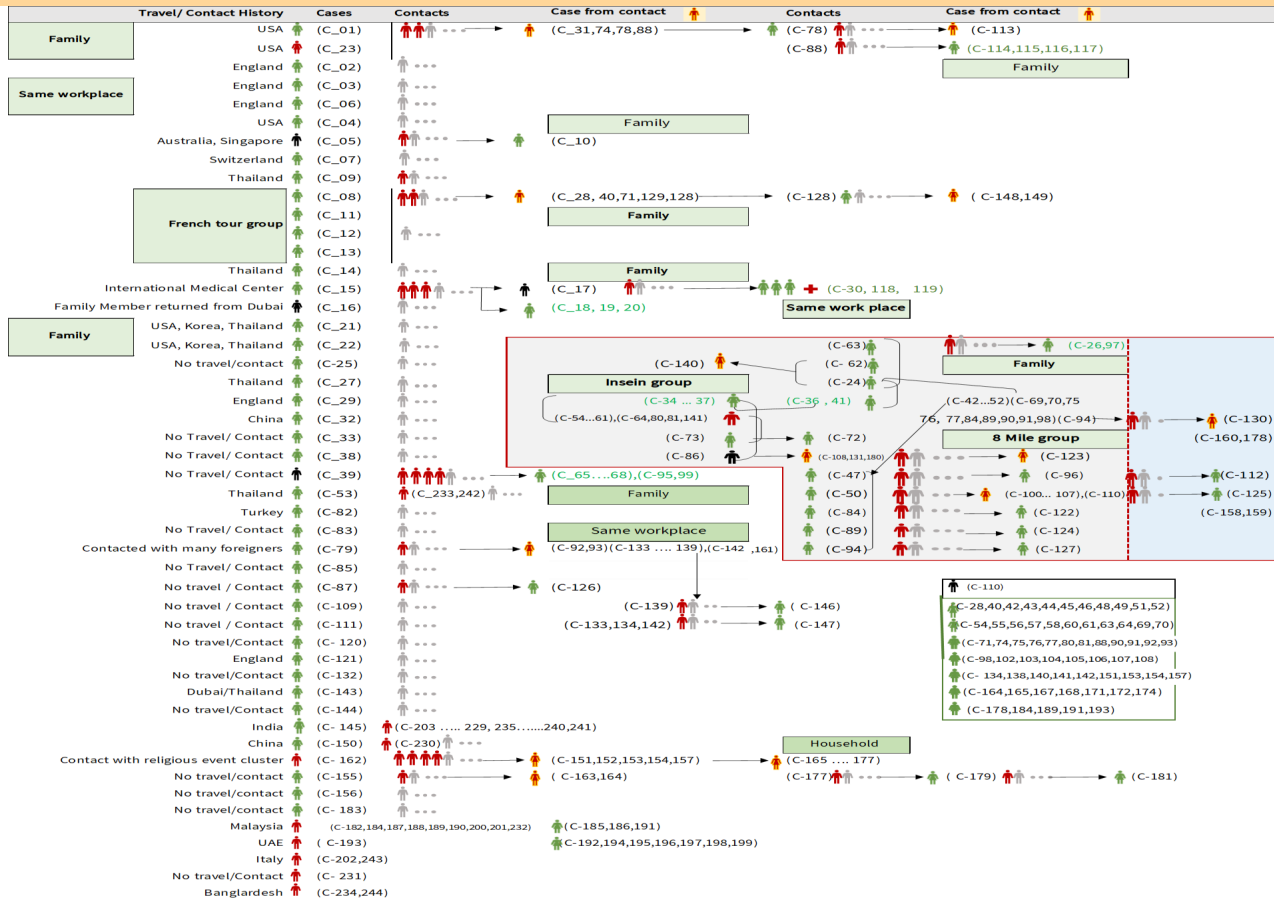
Total laboratory confirmed cases by date (as of 9.6.2020, 1:00 am), n= 244



Cumulative Number of active confirmed cases, recovered and deaths (23.3.2020 – 9-6-2020), n (cumulative)=244



Summary of COVID-19 confirmed cases (as of 9-6-2020) ,n (contacts)= 5,010

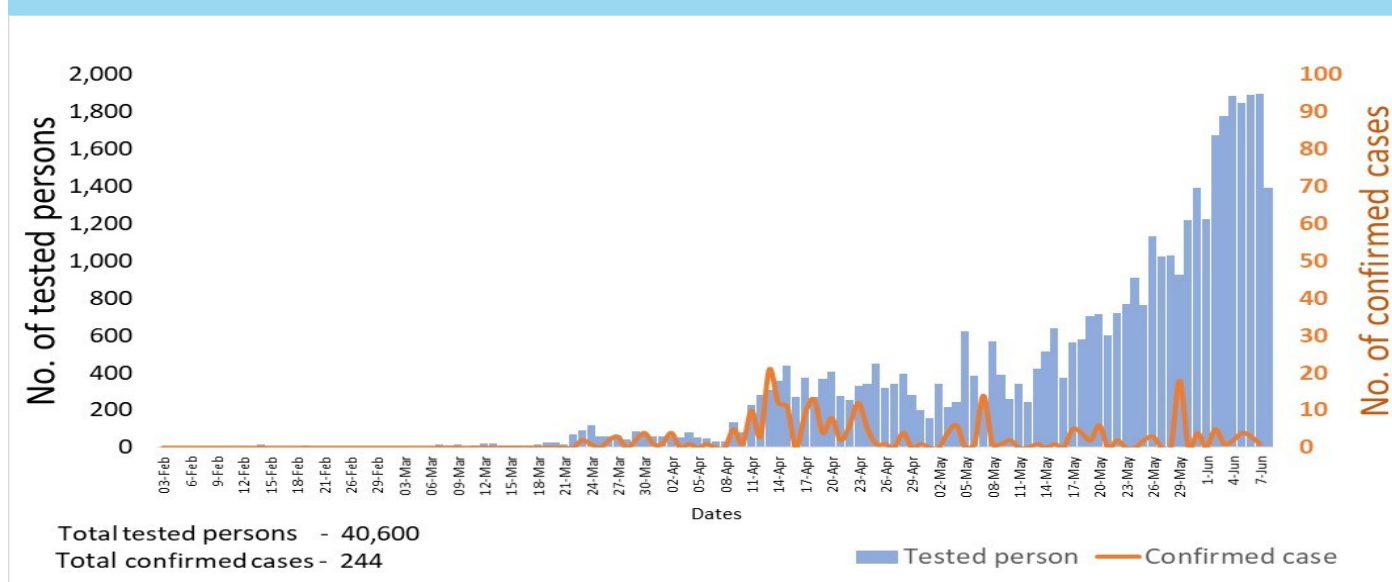


Summary of current situation

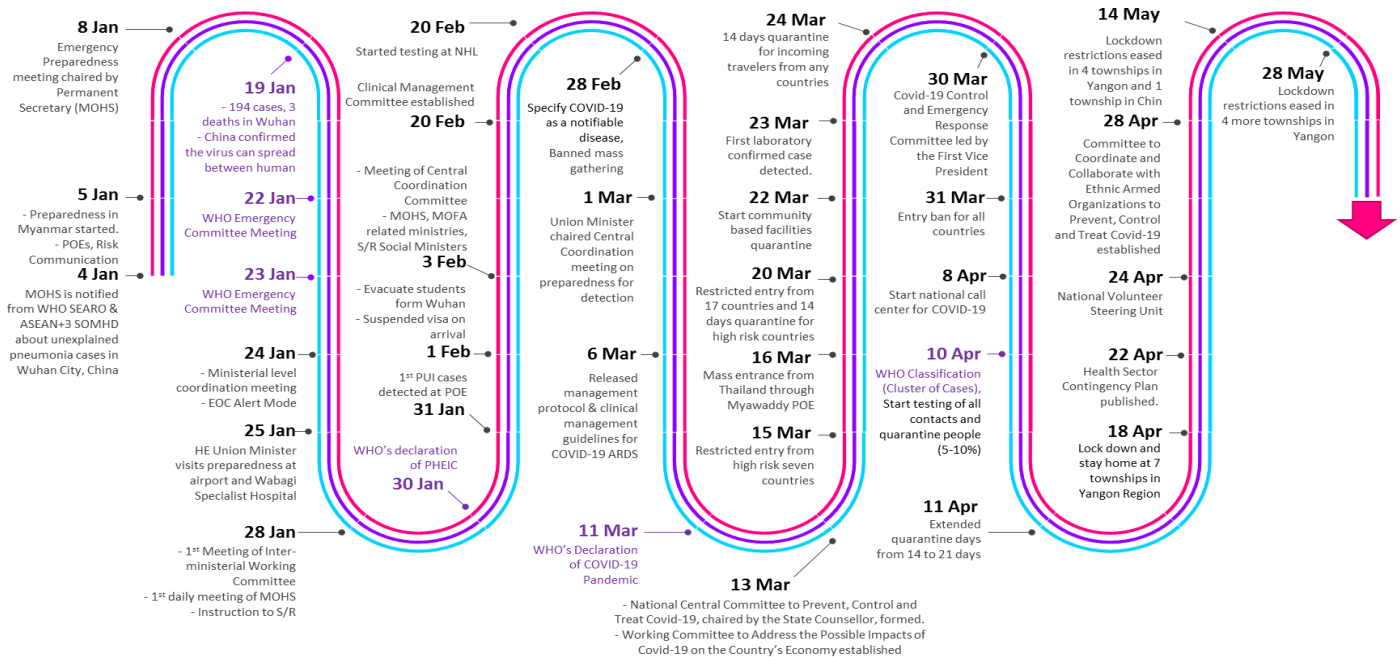
Type	New (7.6.2020-8.6.2020)	Total (on 8.6.2020)
Suspected and Person Under Investigation (PUI)	33	275
Hospital Quarantine	13	115
Facility Quarantine	2,771	46,172

Person under Investigation (PUI) by State/Region hospitals (7.6.2020 – 8.6.2020) n= 5,314			No. of Facility Quarantine sites and Quarantined people on 8.6.2020			
No.	State/Region	PUI	No.	State/Region	No. of facilities	Total no. of quaran-tine
1.	Yangon	2,750	1.	Magway	2,859	8,412
2.	Mandalay	968	2.	Bago	516	6,259
3.	Shan(N)	190	3.	Kachin	725	4,776
4.	Mon	190	4.	Kayin	665	3,551
5.	Kayin	185	5.	Sagaing	1,856	3,263
6.	Magway	179	6.	Mandalay	382	3,088
7.	Bago	175	7.	Rakhine	612	2,936
8.	Shan (E)	109	8.	Mon	165	2,743
9	Ayeyarwaddy	99	9	Yangon	80	2,730
10.	Shan(S)	91	10.	Ayeyarwaddy	646	2,287
11.	Sagaing	80	11.	Shan North	405	1,763
12.	Kayah	76	12.	Shan S	116	1,467
13.	Naypyitaw	61	13.	Naypyitaw	19	1,206
14.	Rakhine	58	14.	Tanintharyi	189	1,147
15.	Thanintharyi	53	15.	Chin	38	285
16.	Kachin	29	16.	Kayah	18	190
17.	Chin	21	17.	Shan East	11	69
Total		5,314	Total		9,302	46,172

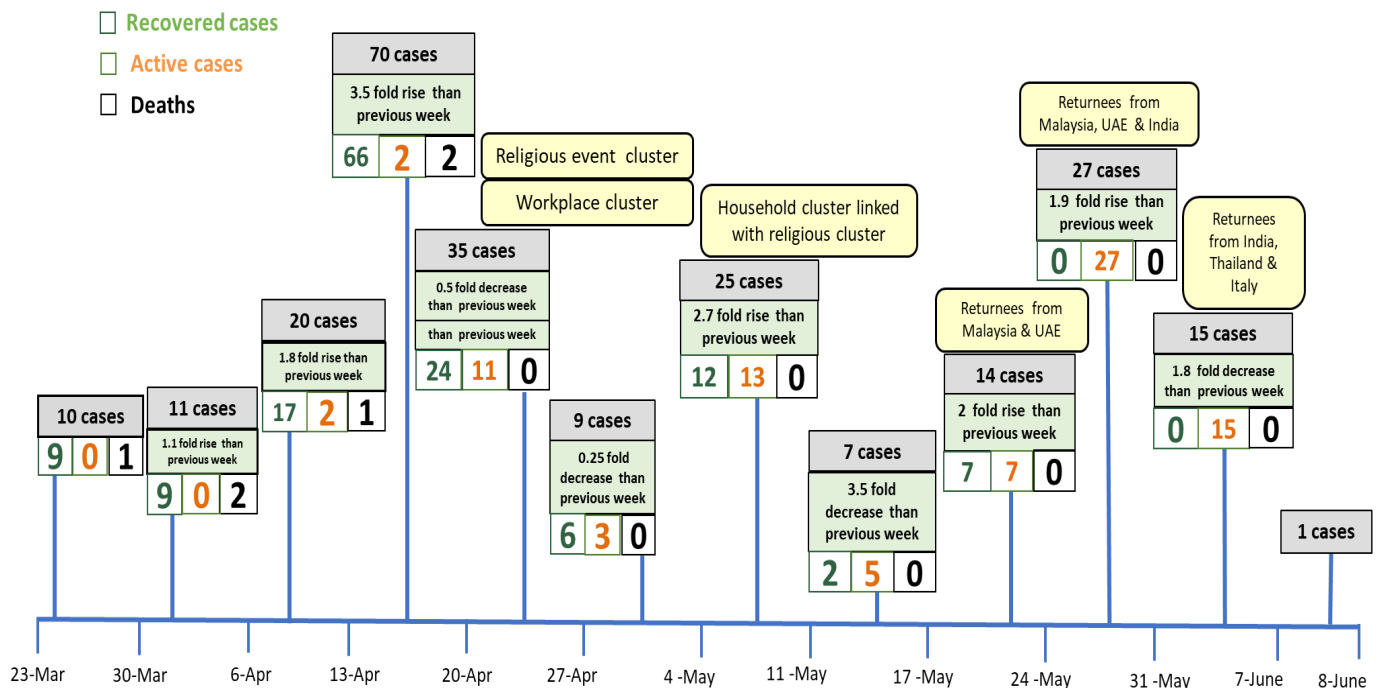
COVID-19 confirmed cases among tested by date (as of 8.6.2020)



Timeline of Preparedness and Response to COVID-19 in Myanmar (as of 8.6.2020)



Summary of new confirmed cases detection after first two cases (as of 8.6.2020)



- Confirmed cases were detected as peak in the 4th week after first confirmed cases due to religious event cluster.
- Confirmed cases were decreased but still raised than the first 3 weeks due to religious event cluster and workplace cluster.
- There were an increased in numbers of cases in the 7th week after the first two cases due to household cluster linked with religious cluster.
- Confirmed cases were detected by nearly two fold rise in the 9th and 10th weeks after first two cases because of returnees coming back by relief flights.