



Ministry of Health and Sports (Myanmar)

Department of Public Health

Central Epidemiology Unit

(9 October 2020)

Coronavirus Disease 2019 (COVID-19)

Situation Report - 185

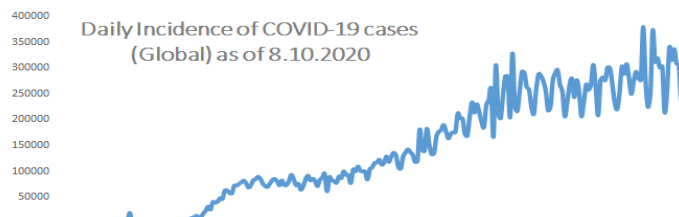
Data as reported by States and Regions by 8 October 2020

WHO Coronavirus Disease (COVID-19) Dashboard data as of 3:24 PM CEST 8 October 2020

Confirmed cases
36,002,827

Deaths
1049,810

Case Fatality Rate
2.9%



Myanmar Situation

Total Tested
328,477

Confirmed Cases
22,445

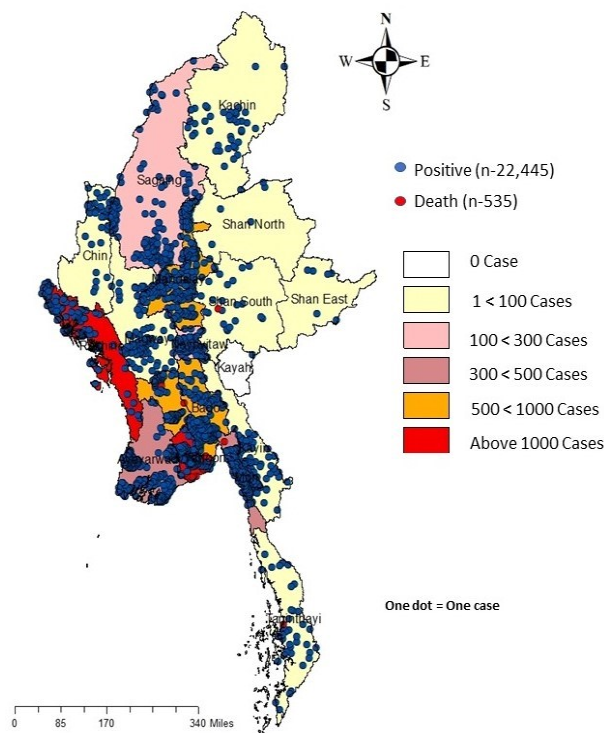
Negative
306,032

Discharged
6,366
28.4% of Confirmed cases

Death
535
2.4% of Confirmed cases

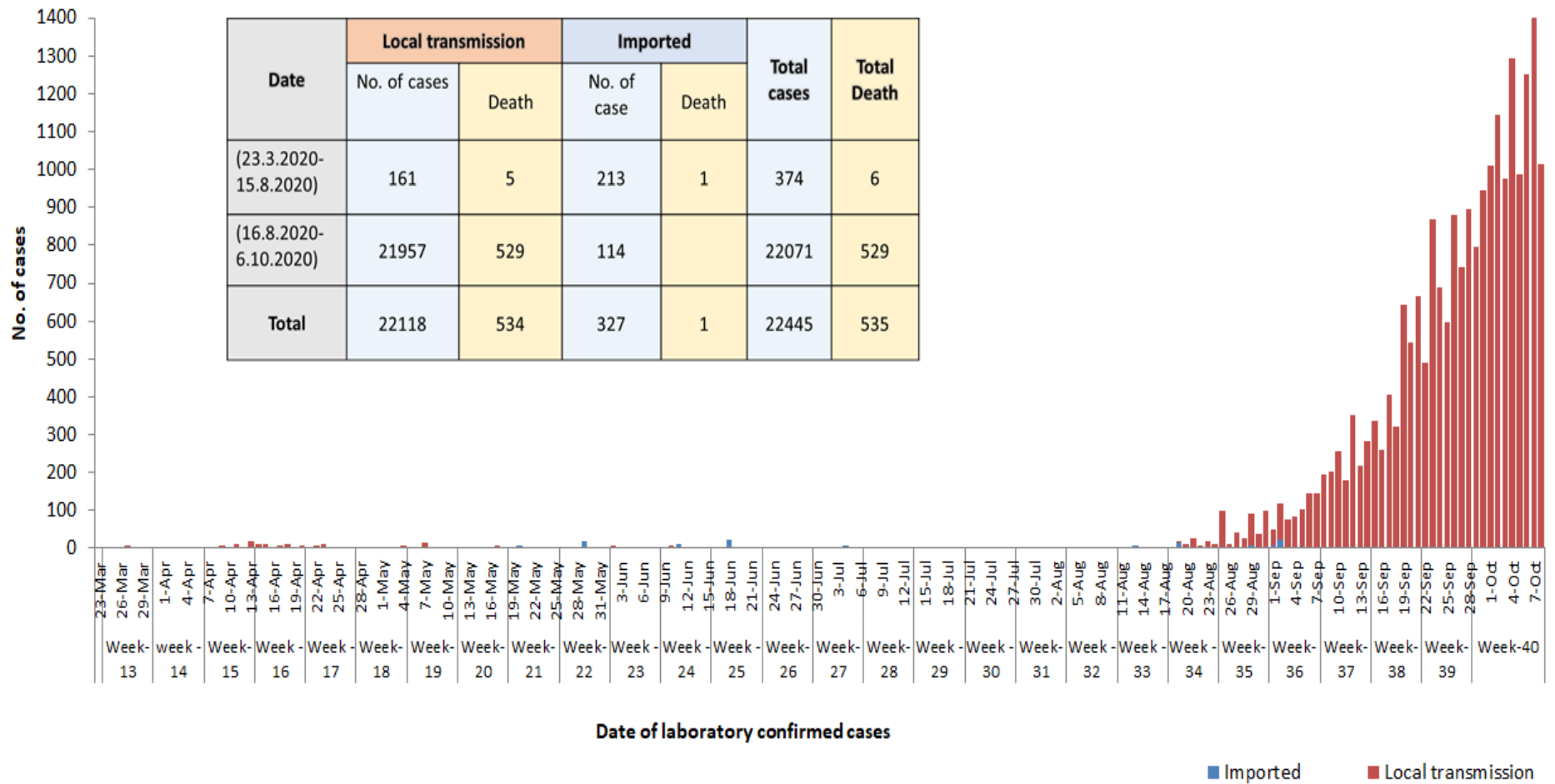
No	State/Region	COVID -19 Confirmed case	New confirmed cases within 24 hours	Deaths
1	Yangon	17,829	815	507
2	Rakhine	1,868	16	7
3	Bago	655	86	3
4	Mandalay	573	21	2
5	Ayeyarwaddy	456	21	3
6	Mon	351	17	7
7	Naypyitaw	198	18	3
8	Sagaing	136	5	-
9	Magway	87	6	-
10	Thanintharyi	84	1	1
11	Kachin	56	3	-
12	Kayin	54	3	1
13	Chin	44	-	-
14	Shan(South)	43	-	1
15	Shan(East)	6	-	-
16	Shan(North)	5	-	-
17	Kayar	-	-	-
Total		22,445	1,012	535

Map showing COVID-19 laboratory confirmed cases

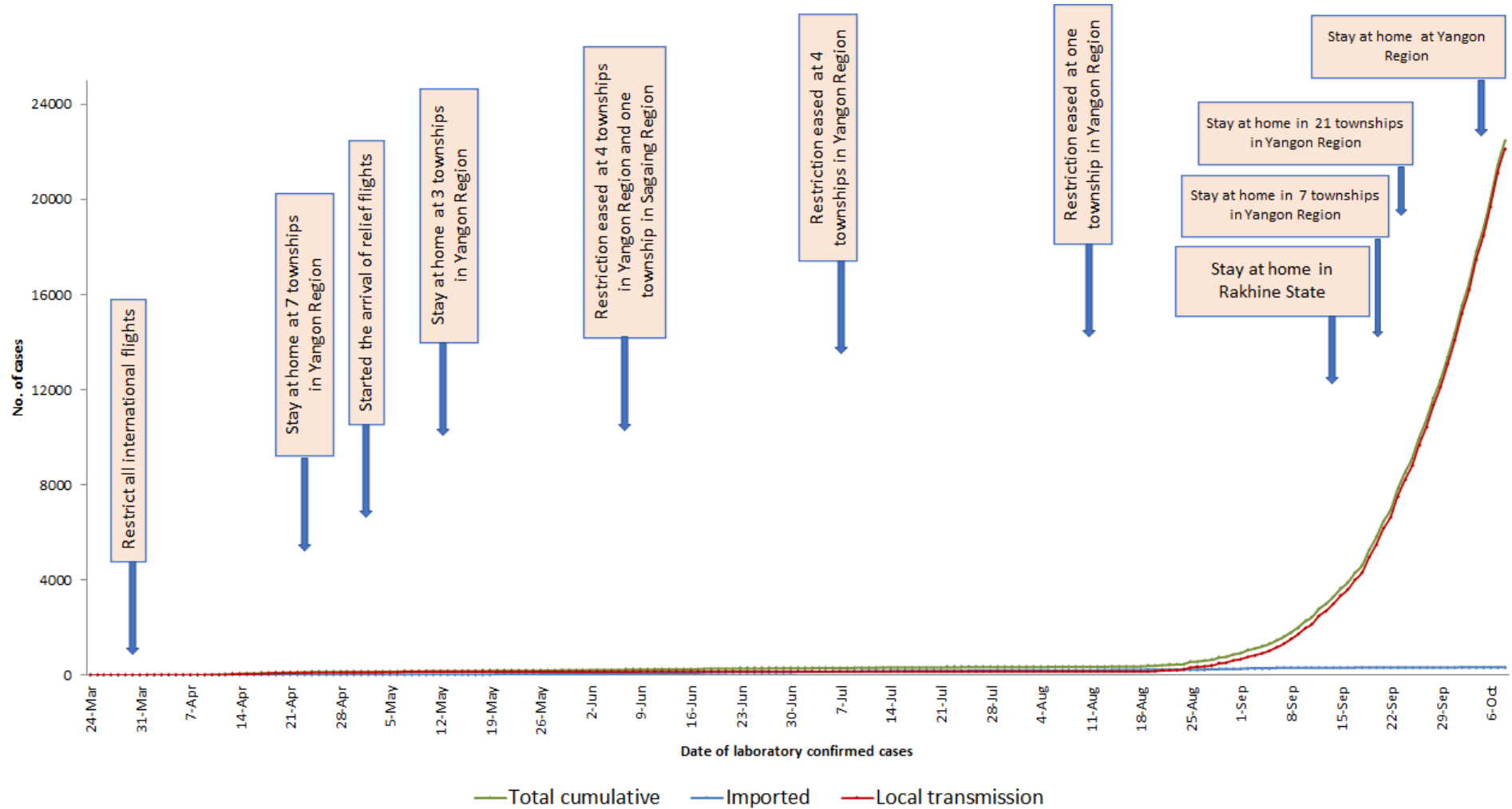


*No. of new cases by State and Region are counted according to epidemiology situation

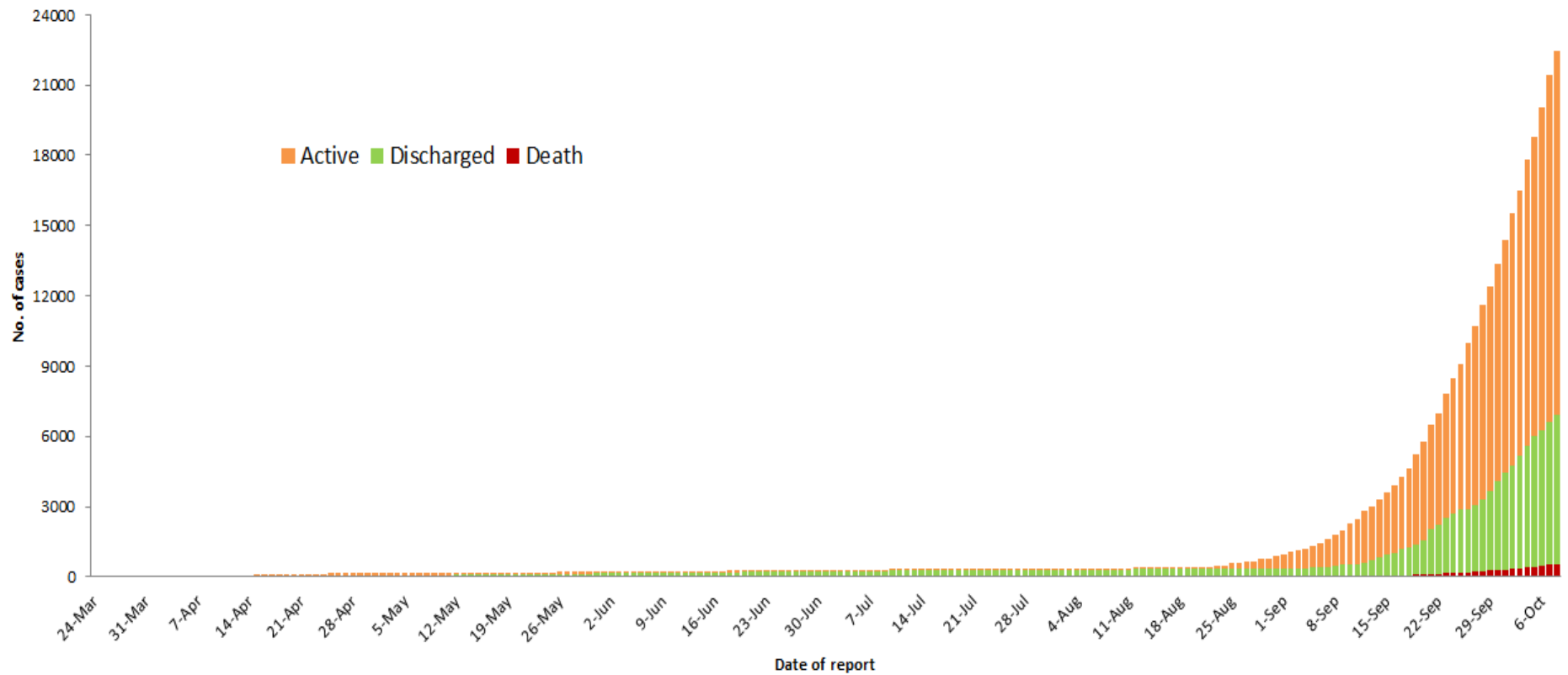
COVID-19 confirmed cases by types of transmissions (as of 8.10.2020) n=22,445



Total laboratory confirmed cases by date (as of 8.10.2020), n= 22,445



Cumulative Number of active confirmed cases, recovered and deaths (23.3.2020 – 8.10.2020), n (cumulative)=22,445

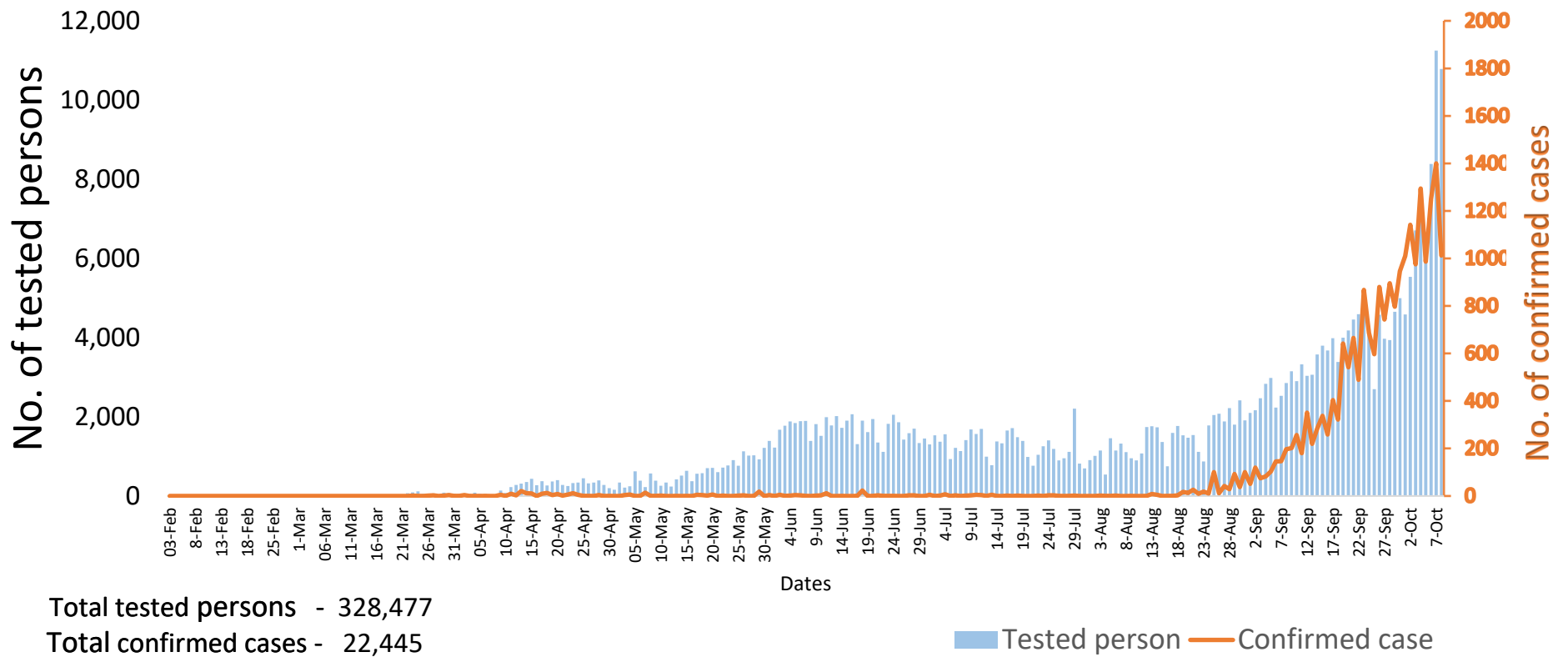


Summary of current situation		
Type	New (7.10.2020-8.10.2020)	Total (on 8.10.2020)
Suspected and Person Under Investigation (PUI)	593	2,071
Hospital Quarantine	49	410
Facility Quarantine	2,609	43,143

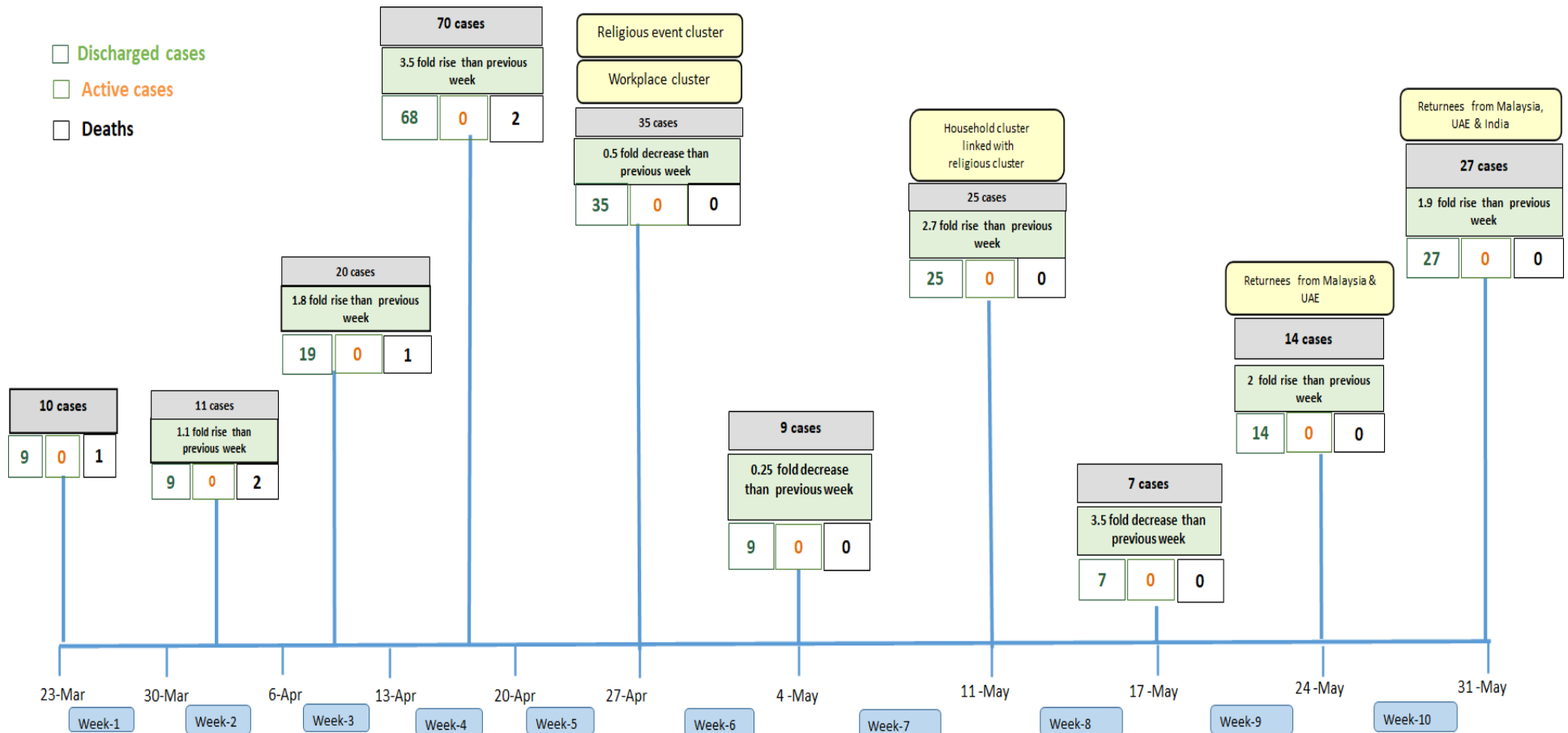
Person under Investigation (PUI) by State/Region hospitals (31.1.2020 – 8.10.2020) n= 20,289			No. of Facility Quarantine sites and Quarantined people on 8.10.2020			
No.	State/Region	PUI	No.	State/Region	No. of facilities	Total no. of quarantine
1	Yangon	13329	1	Bago	1,030	7,195
2	Mandalay	2742	2	Ayeyarwaddy	911	5,670
3	Mon	761	3	Sagaing	670	4,401
4	Kayin	501	4	Magway	603	4,347
5	Magway	439	5	Yangon	87	4,317
6	Rakhine	430	6	Kachin	306	3,573
7	Ayeyarwaddy	376	7	Mandalay	394	2,978
8	Bago	374	8	Mon	78	1,978
9	Shan(N)	356	9	Kayin	301	1,850
10	Thanintharyi	160	10	Rakhine	291	1,522
11	Shan(S)	155	11	Shan South	122	1,495
12	Shan (E)	151	12	Shan North	402	1,087
13	Sagaing	151	13	Tanintharyi	153	1,029
14	Naypyitaw	124	14	Naypyitaw	11	798
15	Kachin	96	15	Chin	30	417
16	Kayah	87	16	Kayah	12	246
17	Chin	57	17	Shan East	19	240
Total		20,289	Total		5,420	43,143

*Facility quarantine rule changed from 21 days to 14 days on 11-9-2020 while 7 days home quarantine rule remain unchanged.

COVID-19 confirmed cases among tested by date (as of 8.10.2020)

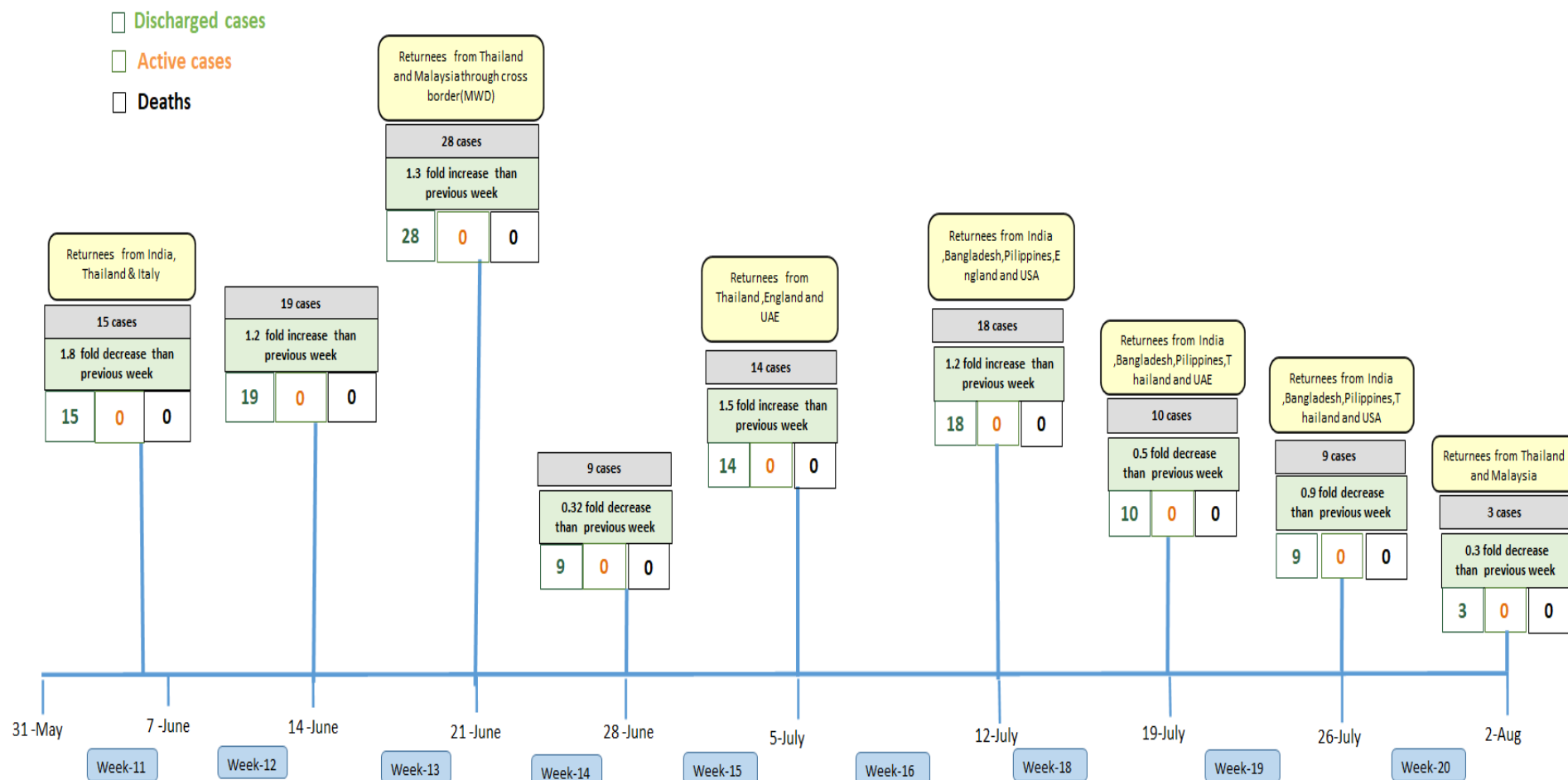


Summary of new confirmed cases detection after first two cases (as of 8.10.2020)



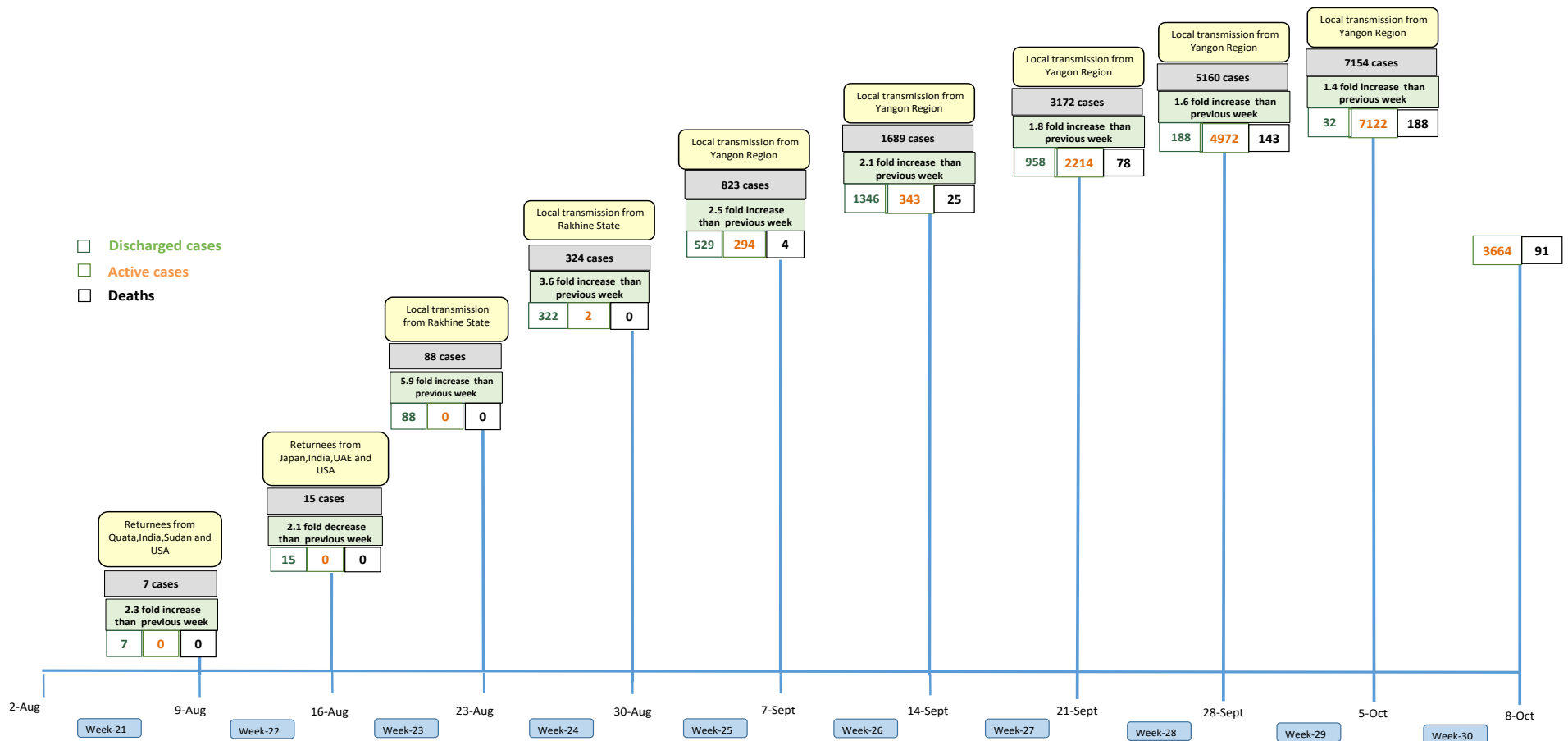
- Confirmed cases were detected as a peak in the 4th week after first confirmed cases due to the religious event cluster.
- Confirmed cases were decreased but still raised than the first 3 weeks due to the religious event cluster and workplace cluster.
- There were an increased in numbers of cases in the 7th week after the first two cases due to the household cluster linked with a religious cluster.
- Confirmed cases were detected by a nearly two-fold rise in the 9th and 10th weeks after the first two cases because of returnees coming back by relief flights.

Summary of new confirmed cases detection after first two cases (as of 8.10.2020)



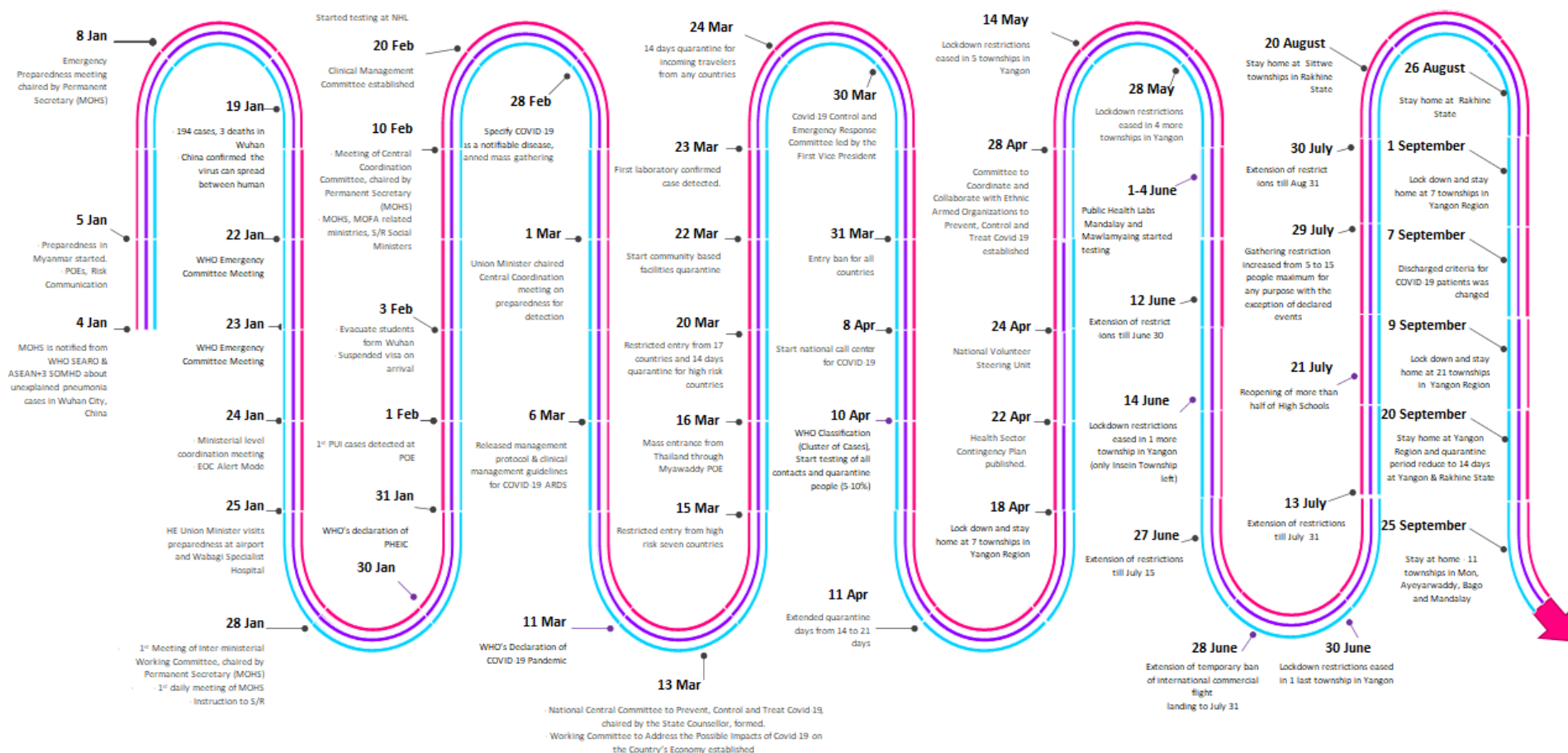
- Confirmed cases were detected as a peak in the 4th week after first confirmed cases due to the religious event cluster.
- Confirmed cases were decreased but still raised than the first 3 weeks due to the religious event cluster and workplace cluster.
- There were an increased in numbers of cases in the 7th week after the first two cases due to the household cluster linked with a religious cluster.
- Confirmed cases were detected by a nearly two-fold rise in the 9th and 10th weeks after the first two cases because of returnees coming back by relief flights.

Summary of new confirmed cases detection after first two cases (as of 8.10.2020)



- Confirmed cases were detected as a peak in the 4th week after first confirmed cases due to the religious event cluster.
- Confirmed cases were decreased but still raised than the first 3 weeks due to the religious event cluster and workplace cluster.
- There were an increased in numbers of cases in the 7th week after the first two cases due to the household cluster linked with a religious cluster.
- Confirmed cases were detected by a nearly two-fold rise in the 9th and 10th weeks after the first two cases because of returnees coming back by relief flights.

Timeline of Preparedness and Response to COVID-19 in Myanmar (as of 8.10.2020)



Hotline Number— 0673 420 268

Data source - CEU, DMS, NHL, PHL (MDY and MLM), DMR, DSGH, State and Region Health Departments