



Ministry of Health and Sports (Myanmar)

Department of Public Health

Central Epidemiology Unit

(6 July 2020)

Coronavirus Disease 2019 (COVID-19)

Situation Report - 90

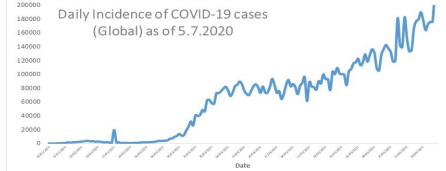
Data as reported by States and Regions by 9:00 PM MST 5 July 2020

Global Situation
(WHO situation report - 167)
data as of 14:30 MST 5 July 2020

Confirmed cases
11,125,245

Deaths
528,204

Case Fatality Rate
4.7 %

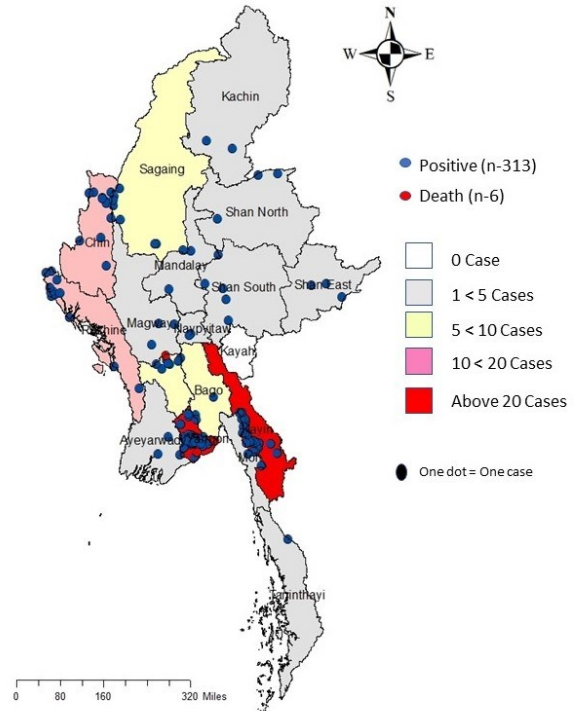


Myanmar Situation

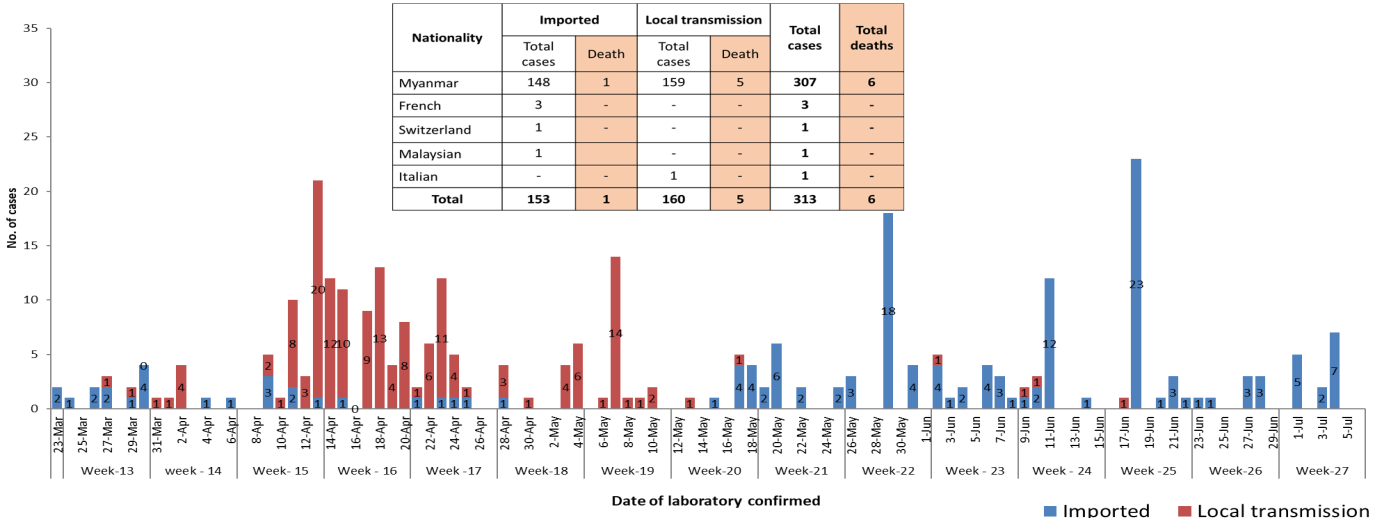
Total tested 84,473	Confirmed cases 313	Negative 84,160	Recovered 245 78.2 % of confirmed cases	Active 62 19.8% of confirmed cases	Death 6 1.9% of confirmed cases
--------------------------------------	--------------------------------------	----------------------------------	---	--	---

No.	State/Region	COVID-19 Confirmed case	Recovered	Deaths
1	Yangon	222	174(2 New)	5
2	Kayin	26	13	-
3	Rakhine	12	8 (2 New)	-
4	Chin	10	10	-
5	Sagaing	9	8	-
6	Bago	9	7	1
7	Shan(South)	4	4	-
8	Mandalay	3	3	-
9	Shan(East)	3	4	-
10	Shan(North)	3	2	-
11	Magway	3	3	-
12	Naypyitaw	2	2	-
13	Ayeyarwaddy	2	2	-
14	Kachin	2	2	-
15	Mon	2	2	-
16	Thanintharyi	1	1	-
17	Kayah	-	-	-
Total		313	245(4 New)	6

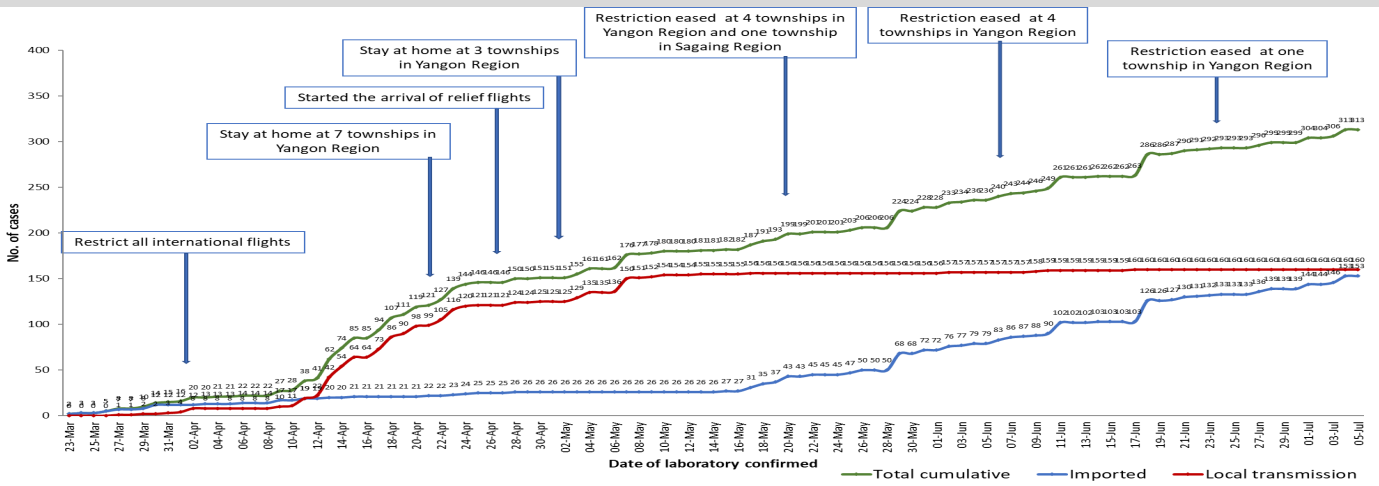
Map showing COVID-19 laboratory confirmed cases



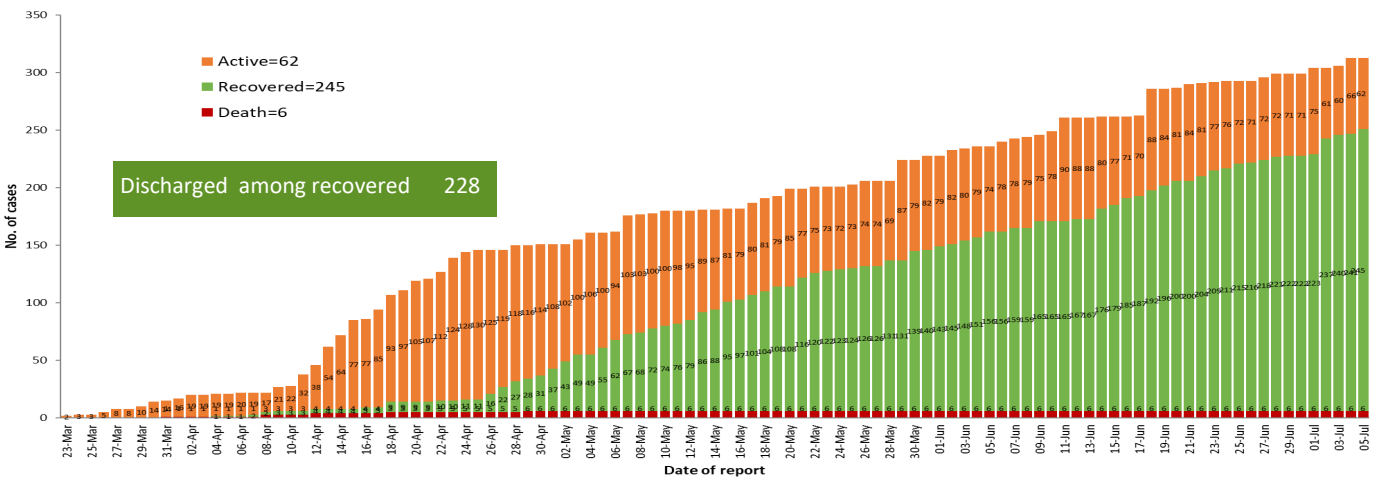
COVID-19 confirmed cases by types of transmissions (as of 5.7.2020, 9:00 pm) n=313



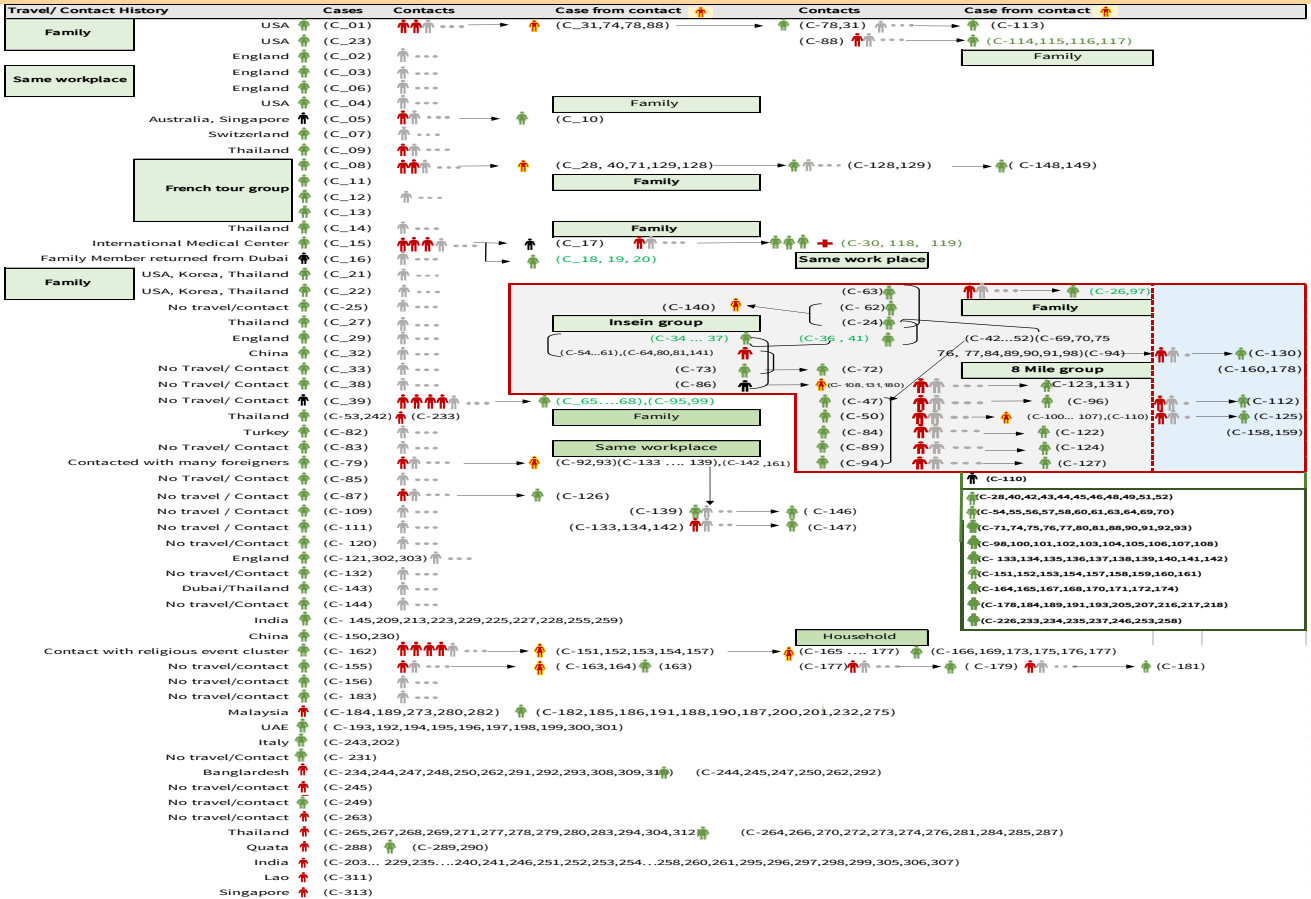
Total laboratory confirmed cases by date (as of 5.7.2020, 9:00 pm), n= 313



Cumulative Number of active confirmed cases, recovered and deaths (23.3.2020 – 5.7.2020), n (cumulative)=313



Summary of COVID-19 confirmed cases (as of 5.7.2020), n (contacts)= 5,681



Summary of current situation

Type	New (4.7.2020-5.7.2020)	Total (on 5.7.2020)
Suspected and Person Under Investigation (PUI)	22	185
Hospital Quarantine	6	50
Facility Quarantine	1,123	23,132

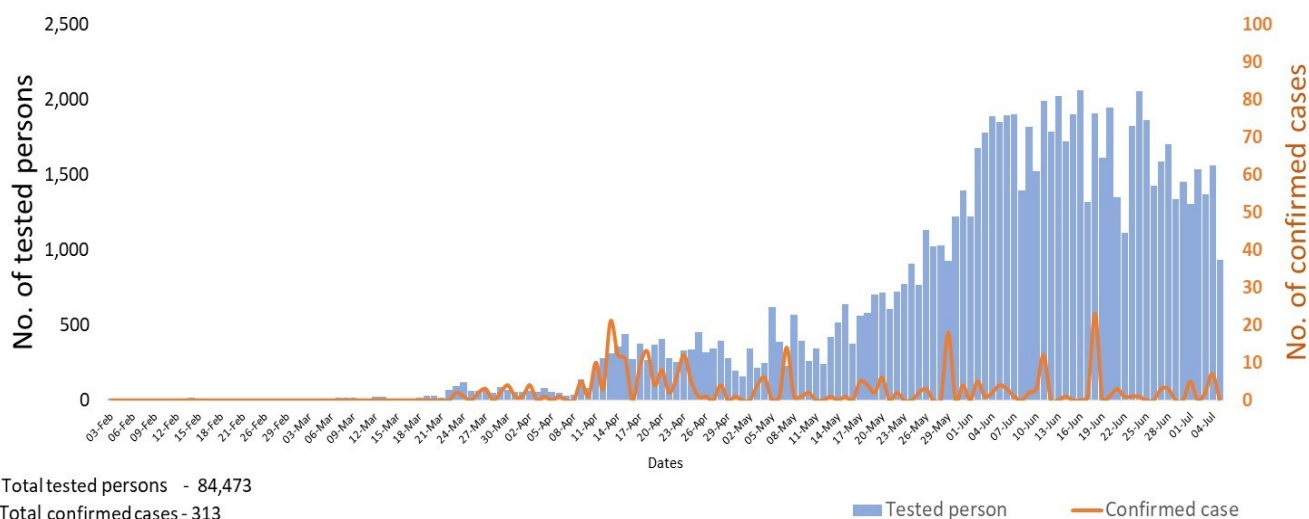
Person under Investigation (PUI) by State/Region hospitals (31.1.2020 – 5.7.2020) n= 6,134

No. of Facility Quarantine sites and Quarantined people on 5.7.2020

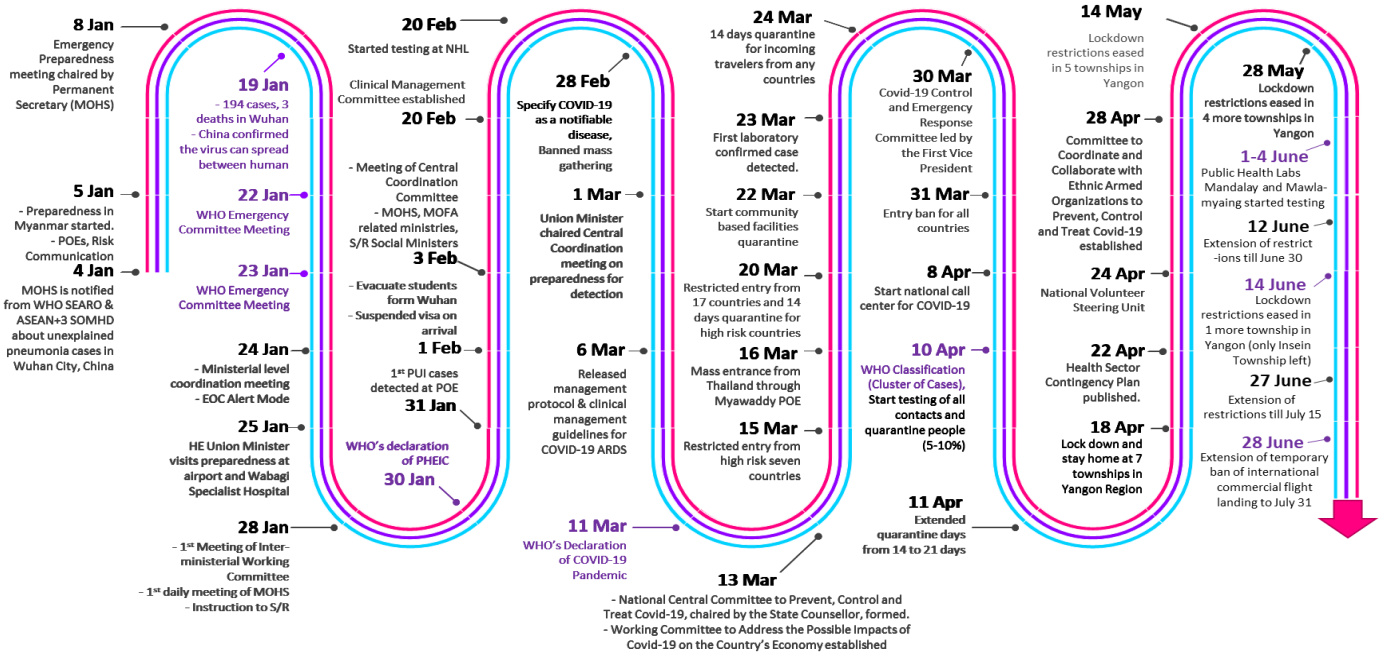
No.	State/Region	PUI
1.	Yangon	3,118
2.	Mandalay	1,214
3.	Kayin	246
4.	Mon	229
5.	Shan (N)	206
6.	Magway	203
7.	Bago	180
8.	Shan (E)	117
9.	Ayeyarwaddy	102
10.	Shan (S)	99
11.	Sagaing	88
12.	Kayah	76
13.	Rakhine	68
14.	Thanintharyi	64
15.	Naypyitaw	63
16.	Kachin	35
17.	Chin	26
Total		6,134

No.	State/Region	No. of facilities	Total no. of quarantine
1.	Yangon	84	4,111
2.	Bago	272	3,198
3.	Kayin	421	2,539
4.	Mon	268	2,380
5.	Magway	2,572	2,330
6.	Mandalay	119	1,390
7.	Kachin	415	1,345
8.	Tanintharyi	189	1,105
9.	Sagaing	969	1,095
10.	Rakhine	292	1,049
11.	Ayeyarwaddy	185	808
12.	Shan South	118	713
13.	Naypyitaw	4	443
14.	Shan North	243	236
15.	Chin	15	173
16.	Shan East	11	128
17.	Kayah	18	89
Total		6,195	23,132

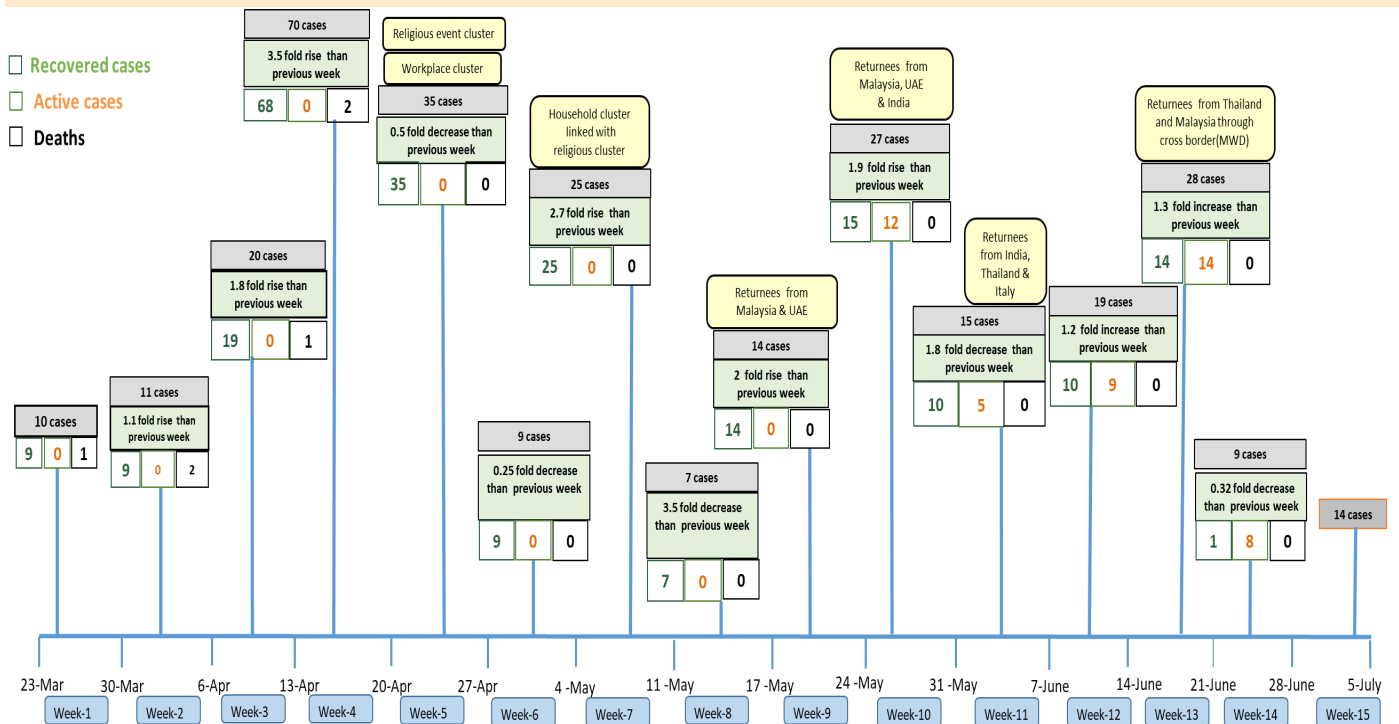
COVID-19 confirmed cases among tested by date (as of 5.7.2020)



Timeline of Preparedness and Response to COVID-19 in Myanmar (as of 5.7.2020)



Summary of new confirmed cases detection after first two cases (as of 5.7.2020)



- Confirmed cases were detected as a peak in the 4th week after first confirmed cases due to the religious event cluster.
- Confirmed cases were decreased but still raised than the first 3 weeks due to the religious event cluster and workplace cluster.
- There were an increased in numbers of cases in the 7th week after the first two cases due to the household cluster linked with a religious cluster.
- Confirmed cases were detected by a nearly two-fold rise in the 9th and 10th weeks after the first two cases because of returnees coming back by relief flights.